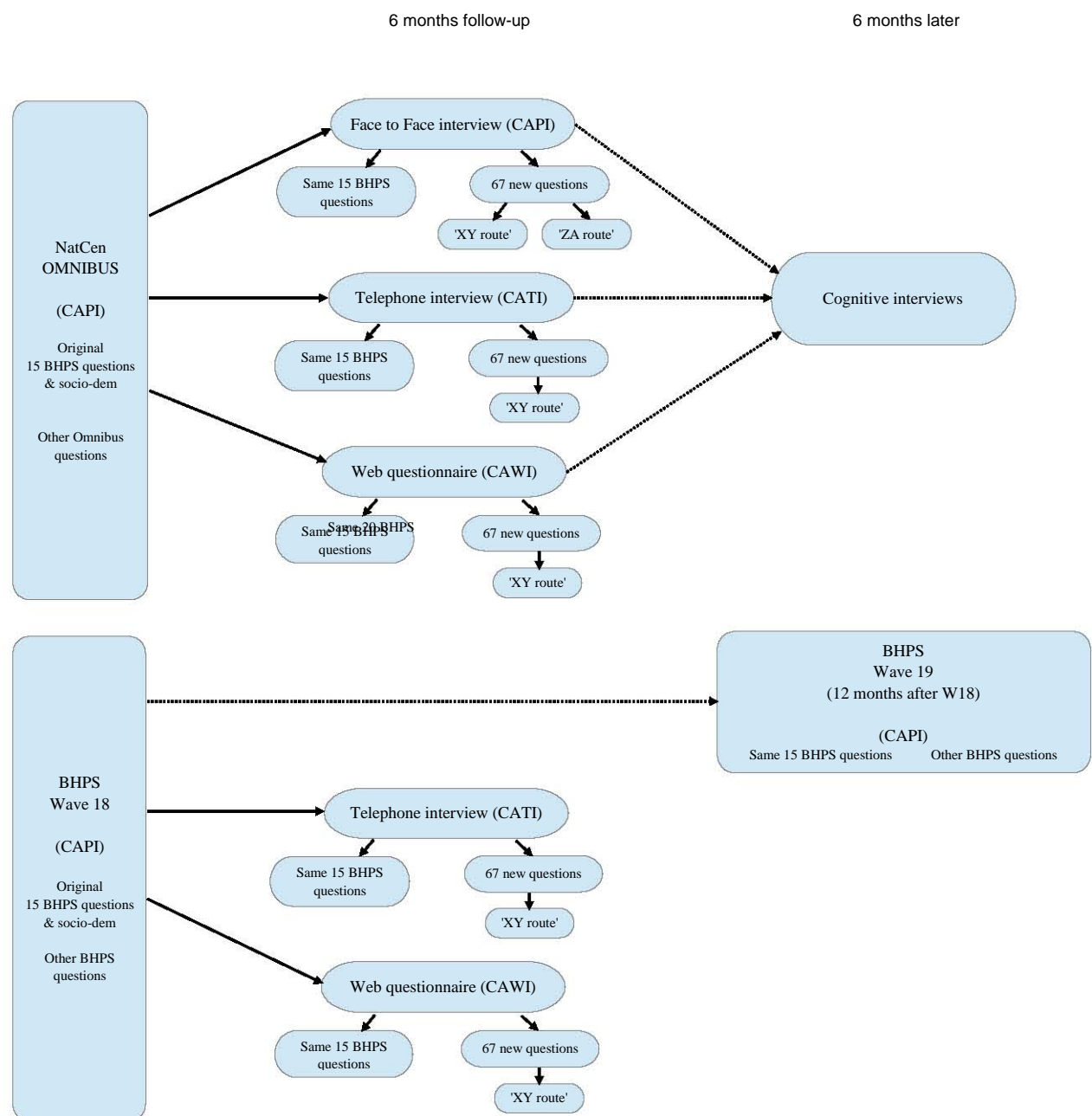


Appendix I

Study Design



Appendix II

Questions and Answers

FM1mm1 [not in BHPS] and FM1mm2

How well would you say you yourself are managing financially these days? Would you say you are.....

[CAPI and CATI: READ OUT]

- 1 Living comfortably
- 2 Doing alright
- 3 Just about getting by
- 4 Finding it quite difficult
- 5 Or Finding it very difficult?

FM2mm1 [not in BHPS] and FM2mm2

Would you say that you yourself are better off or worse off financially than you were a year ago?

- 1 Better off
- 2 Worse off
- 3 About the same

FM3mm1 [not in BHPS] and FM3mm2

Looking ahead, how do you think you will be financially a year from now, will you be. ..

- 1 Better off
- 2 Worse off than you are now
- 3 Or About the same?

FM4mm1 [not in BHPS] and FM4mm2

Do you save any amount of your income for example by putting something away now and then in a bank, building society, or Post Office account other than to meet regular bills? Please include share purchase schemes, ISA's and Tessa accounts.

- 1 Yes
- 2 No

FM5mmx [not in BHPS] and FM5mm2x

CAPI and CATI: I'd like you to tell me on a scale from 1 to 10 how Important having a lot of money is to you, where '1' equals 'Not important at all' and '10' equals 'Very important'.

WRITE IN NUMBER CHOSEN WHERE 1=NOT IMPORTANT AT ALL; 10=VERY IMPORTANT

CAWI: On a scale from 1 to 10 how Important having a lot of money is to you, where '1' equals 'Not important at all' and '10' equals 'Very important'

(1..10) |_|_|

FM5mm2y [asked in CAWI only]

(not asked in CAPI and CATI)

CAWI: On a scale from 1 to 10 how Important having a lot of money is to you, where '1' equals 'Not important at all' and '10' equals 'Very important'.

- 1 Not important at all
- 2
- 3
- 4
- 5
- 6
- 7
- 8
- 9
- 10 Very important

FM6mm1 [not in BHPS] and FM6mm2

CAPI: Showcard

Please look at this card and tell me about how much you personally spend in an average month on eating out at, or buying takeaway food from, a restaurant, pub or cafe, including school meals or meals at work?

[INTERVIEWER: If partner/spouse/parent pays for this item, code 'Nothing']

(not asked in CATI)

CAWI: About how much do you personally spend in an average month on eating out at, or buying takeaway food from, a restaurant, pub or cafe, including school meals or meals at work?

If partner/spouse/parent pays for this item, select 'Nothing'.

- 0 Nothing
- 1 Under £10
- 2 £10- £19
- 3 £20 -£29
- 4 £30-£39
- 5 £40-£49
- 6 £50-£59
- 7 £60-£79
- 8 £80-£99
- 9 £100-£119
- 10 £120-£139
- 11 £140-£159
- 12 £160 or over

FM7mm1 [not in BHPS] and FM7mm2

CAPI: Showcard

Please look at the card and tell me how frequently you go for a drink at a pub or club?

CATI: Please tell me how frequently you go for a drink at a pub or club? Is this.....

CAWI: How frequently do you go for a drink at a pub or club?

- 1 At least once a week
- 2 At least once a month
- 3 Several times a year
- 4 Once a year or less
- 5 Never/almost never

FM8mm1 [not in BHPS] and FM8mm2

Do you normally have access to a car or van that you can use whenever you want to?

- 1 Yes
- 2 No
- 3 Don't drive

H9amm1-H9pmm1 [not in BHPS] and H9amm2-H9pmm2

CAPI: Showcard

Do you have any of the health problems or disabilities listed on this card? You can just tell me which numbers apply.

[INTERVIEWER: Where respondent gives the name of a specific condition other than those on the card (e.g., angina or multiple sclerosis) code as 'other'. Where respondents query 'difficulties in seeing' this excludes those able to read normal size print (e.g., a book or a newspaper) with the aid of glasses and those who need glasses only for specific activities such as driving.]

(not asked in CATI)

CAWI: Do you have any of the following health problems or disabilities?

Do not select "Difficulties in seeing" if you can read normal size print (e.g. a book or a newspaper) with the aid of glasses or you need glasses only for specific activities such as driving.

CODE ALL THAT APPLY

- H9amm1/ H9amm2** None
- H9bmm1/ H9bmm2** Problems or disability connected with: arms, legs, hands, feet, back, or neck (including arthritis and rheumatism)
- H9cmm1/ H9cmm2** Difficulty in seeing (other than needing glasses to read normal size print)
- H9dmm1/ H9dmm2** Difficulty in hearing
- H9emm1/ H9emm2** Skin conditions/allergies
- H9fmm1/ H9fmm2** Chest/breathing problems, asthma, bronchitis
- H9gmm1/ H9gmm2** Heart/high blood pressure or blood circulation problems
- H9hmm1/ H9hmm2** Stomach/liver/kidneys or digestive problems

H9imm1/ H9imm2	Diabetes
H9jmm1/ H9jmm2	Anxiety, depression or bad nerves, psychiatric problems
H9kmm1/ H9kmm2	Alcohol or drug related problems
H9lmm1/ H9lmm2	Epilepsy
H9mmm1/ H9mmm2	Migraine or frequent headaches
H9nmm1/ H9nmm2	Cancer
H9omm1/ H9omm2	Stroke
H9pmm1/ H9pmm2	Other health problems.

SHOWCARD:

- (1) Problems or disability connected with: arms, legs, hands, feet, back, or neck (including arthritis and rheumatism)
- (2) Difficulty in seeing (other than needing glasses to read normal size print)
- (3) Difficulty in hearing
- (4) Skin conditions/allergies
- (5) Chest/breathing problems, asthma, bronchitis
- (6) Heart/high blood pressure or blood circulation problems
- (7) Stomach/liver/kidneys or digestive problems
- (8) Diabetes
- (9) Anxiety, depression or bad nerves, psychiatric problems
- (10) Alcohol or drug related problems
- (11) Epilepsy
- (12) Migraine or frequent headaches
- (13) Cancer
- (14) Stroke
- (15) Other health problems.

H10mm1 [not in BHPS] and H10mm2

Since <insert date > Approximately how many times have you talked to, or visited a GP or family doctor about your own health? Please do not include any visits to a hospital.

- 1 None
- 2 One or two
- 3 Three to five
- 4 Six to ten
- 5 More than ten

H11mm1 [not in BHPS] and H11mm2

CAPI: Showcard

CAPI and CATI: Please tell me whether you consider your local area medical facilities to be excellent, very good, fair or poor?

CAWI:

Do you consider your local area medical facilities to be excellent, very good, fair or poor?

- 1 Excellent
- 2 Very good
- 3 Fair
- 4 Poor

N12mm1 [not in BHPS] and N12mm2

Overall, do you like living in this neighbourhood?

- 1 Yes
- 2 No

N13mm1 [not in BHPS] and N13mm2

If you could choose, would you stay here in your present home or would you prefer to move somewhere else?

- 1 Stay here
- 2 Prefer to move

N14mm1 [not in BHPS] and N14mm2

How often do you talk to any of your neighbours? Is it . . .

[CAPI and CATI: READ OUT]

- 1 On most days
- 2 Once or twice a week
- 3 Once or twice a month
- 4 Less often than once a month
- 5 Or Never?

N15mm1 [not in BHPS] and N15mm2

CAPI: Showcard

Please look at this card and tell me how strongly you agree or disagree with this statement.

CATI: Please tell me how strongly you agree or disagree with this statement.

CAWI: How strongly do you agree or disagree with this statement.

'People in Britain are too ready to criticise their country.'

- 1 Strongly agree
- 2 Agree
- 3 Neither agree nor disagree
- 4 Disagree
- 5 Strongly disagree

The next few questions continue on the theme of Great Britain.

GB16x

CAPI: Showcard X

On the whole, how satisfied are you with the way democracy and personal freedom work in Great Britain? Please look at this card and tell me your answer.

CATI: On the whole, how satisfied are you with the way democracy and personal freedom work in Great Britain, where 1 is very satisfied and 7 is very dissatisfied?

INTERVIEWER: WRITE IN NUMBER CHOSEN WHERE 1=VERY SATISFIED; 7=VERY DISSATISFIED

CAWI: On the whole, how satisfied are you with the way democracy and personal freedom work in Great Britain?

- 1 Very Satisfied
- 2
- 3
- 4
- 5
- 6
- 7 Very dissatisfied

SHOWCARD X:

very							very
satisfied							dissatisfied
	1	2	3	4	5	6	7

Web version:

very							very
satisfied							dissatisfied
	1	2	3	4	5	6	7
	0	0	0	0	0	0	0

GB16y

On the whole, how satisfied are you with the way democracy and personal freedom work in Great Britain?

CAPI: Showcard Y

Please look at this card and tell me your answer.

CATI and CAWI: Would you say you are . . .

[CATI: READ OUT]

- 1 Very Satisfied
- 2 Moderately Satisfied
- 3 Slightly Satisfied
- 4 Neither Satisfied nor Dissatisfied
- 5 Slightly Dissatisfied
- 6 Moderately Dissatisfied
- 7 Very Dissatisfied

SHOWCARD Y: layout as above

Web version:

Very satisfied.....	0
Moderately satisfied.....	0
Slightly satisfied.....	0
Neither satisfied nor dissatisfied	0
Slightly dissatisfied.....	0
Moderately dissatisfied.....	0
Very dissatisfied.....	0

<div><div><div>GB17x</div><div>CAPI: Showcard X</div><div>And on the whole, how satisfied are you with the present state of the economy in Great Britain? Please look at this card and tell me your answer.</div><div>CATI: And on the whole, how satisfied are you with the present state of the economy in Great Britain, where 1 is very satisfied and 7 is very dissatisfied?</div><div>CAWI: And on the whole, how satisfied are you with the present state of the economy in Great Britain?</div></div><div><div><div>1</div><div>Very Satisfied</div></div><div>2</div><div>3</div><div>4</div><div>5</div><div>6</div><div>7</div><div>Very dissatisfied</div></div><div><div>SHOWCARD X:</div><div><div>very</div><div>satisfied</div><div>1</div><div>2</div><div>3</div><div>4</div><div>5</div><div>6</div><div>7</div><div>very</div><div>dissatisfied</div></div></div><div><div>Web version:</div><div><div>very</div><div>satisfied</div><div>1</div><div>2</div><div>3</div><div>4</div><div>5</div><div>6</div><div>7</div><div>very</div><div>dissatisfied</div><div>0</div><div>0</div><div>0</div><div>0</div><div>0</div><div>0</div><div>0</div></div></div></div>	<div><div><div>GB17y</div><div>And on the whole, how satisfied are you with the present state of the economy in Great Britain?</div><div>CAPI: Showcard Y</div><div>Please look at this card and tell me your answer.</div><div>CATI and CAWI: Would you say you are . . .</div><div>[CATI: READ OUT]</div></div><div><div>1</div><div>Very Satisfied</div></div><div>2</div><div>Moderately Satisfied</div><div>3</div><div>Slightly Satisfied</div><div>4</div><div>Neither Satisfied nor Dissatisfied</div><div>5</div><div>Slightly Dissatisfied</div><div>6</div><div>Moderately Dissatisfied</div><div>7</div><div>Very Dissatisfied</div></div> <div><div>SHOWCARD Y: layout as above</div><div><div>Web version:</div><div><div>Very satisfied..... 0</div><div>Moderately satisfied..... 0</div><div>Slightly satisfied..... 0</div><div>Neither satisfied nor dissatisfied 0</div><div>Slightly dissatisfied..... 0</div><div>Moderately dissatisfied.....0</div><div>Very dissatisfied..... 0</div></div></div></div>
<div><div><div>GB18x</div><div>Thinking back to the last general election, would you say that the standard of living has increased or decreased, or has it stayed the same?</div></div><div><div>1</div><div>Increased</div><div>GO TO GB19x</div></div><div>2</div><div>Decreased</div><div>GO TO GB20x</div><div>3</div><div>Stayed the same</div><div>GO TO GB21x</div></div> <div><div><div>GB19x</div><div>Would you say it has increased by a small amount, a medium amount or a large amount?</div></div><div><div>1</div><div>Increased by a small amount</div></div><div>2</div><div>Increased by a medium amount</div><div>3</div><div>Increased by a large amount</div></div> <div><div><div>GB20x</div><div>Would you say it has decreased by a small amount, a medium amount or a large amount?</div></div><div><div>1</div><div>Decreased by a small amount</div></div><div>2</div><div>Decreased by a medium amount</div><div>3</div><div>Decreased by a large amount</div></div>	<div><div><div>GB18y</div><div>CAPI: Showcard Y</div><div>Thinking back to the last general election and looking at this card, what best describes the change in the standard of living?</div><div>CATI and CAWI: Thinking back to the last general election, would you say that the standard of living has . .</div><div>[CATI: READ OUT]</div></div><div><div>1</div><div>Increased by a large amount</div></div><div>2</div><div>Increased by a medium amount</div><div>3</div><div>Increased by a small amount</div><div>4</div><div>Stayed the same</div><div>5</div><div>Decreased by a small amount</div><div>6</div><div>Decreased by a medium amount</div><div>7</div><div>Decreased by a large amount</div></div> <div><div>SHOWCARD Y and Web version: layout as above</div></div>

<p>GB21x <u>CAPI and CATI:</u> I am now going to ask you a number of questions about different methods for reducing poverty. In your opinion, which of the following would be effective? <u>CAWI:</u> Next are a number of questions about different ways for reducing poverty. In your opinion, which of the following would be effective?</p> <p>Would increasing pensions reduce poverty?</p> <p>1 Yes 2 No</p>	<p>GB21y1- GB21y9 <u>CAPI:</u> Showcard Y This card shows a number of different ways for reducing poverty. In your opinion, which of the following would be effective in reducing poverty? CODE ALL THAT APPLY. (not asked in CATI) <u>CAWI:</u> Next are a number of questions about different ways for reducing poverty. In your opinion, which of the following would be effective in reducing poverty? MARK ALL THAT APPLY.</p> <p>GB21y1 Increasing pensions 0/1</p> <p>GB21y2 Investing in education for children 0/1</p> <p>GB21y3 Improving access to child care 0/1</p> <p>GB21y4 Redistribution of wealth 0/1</p> <p>GB21y5 Increasing trade union rights 0/1</p> <p>GB21y6 Reducing discrimination 0/1</p> <p>GB21y7 Increasing income support 0/1</p>
<p>GB22x Would investing in education for children reduce poverty?</p> <p>1 Yes 2 No</p>	
<p>GB23x Would improving access to child care reduce poverty?</p> <p>1 Yes 2 No</p>	
<p>GB24x Would the redistribution of wealth reduce poverty?</p> <p>1 Yes 2 No</p>	
<p>GB25x Would increasing trade union rights reduce poverty?</p> <p>1 Yes 2 No</p>	
<p>GB26x Would reducing discrimination reduce poverty?</p> <p>1 Yes 2 No</p>	
<p>GB27x Would increasing income support reduce poverty?</p> <p>1 Yes 2 No</p>	

	1 Very important 2 Moderately important 3 Somewhat important 4 Or not important at all?
N29x3 The county or region, for instance, Yorkshire, Lothian or East Anglia (Rank 1..6)	N31y How important to you is the county or region, for instance, Yorkshire, Lothian or East Anglia? Would you say . . . [CAPI and CATI: READ OUT] 1 Very important 2 Moderately important 3 Somewhat important 4 Or not important at all?
N29x4 The country in which you live, for instance, England, Northern Ireland, Scotland, Wales (Rank 1..6)	N32y How important to you is the country in which you live, for instance, England, Northern Ireland, Scotland, Wales? Would you say . . . [CAPI and CATI: READ OUT] 1 Very important 2 Moderately important 3 Somewhat important 4 Or not important at all?
N29x5 The United Kingdom (Rank 1..6)	N33y How important to you is the United Kingdom? Would you say . . . [CAPI and CATI: READ OUT] 1 Very important 2 Moderately important 3 Somewhat important 4 Or not important at all?
N29x6 Europe (Rank 1..6) ----- SHOWCARD X: The street in which you live The city or town in which you live The county or region, for instance, Yorkshire, Lothian or East Anglia The country in which you live, for instance, England, Northern Ireland, Scotland, Wales The United Kingdom Europe	N34y How important to you is Europe? Would you say . . . [CAPI and CATI: READ OUT] 1 Very important 2 Moderately important 3 Somewhat important 4 Or not important at all?

<p>Web version:</p> <p>The street in which you live <input type="checkbox"/></p> <p>The city or town in which you live <input type="checkbox"/></p> <p>The county or region, for instance, Yorkshire, Lothian or East Anglia.. <input type="checkbox"/></p> <p>The country in which you live, for instance, England, Northern Ireland, Scotland, Wales..... <input type="checkbox"/></p> <p>The United Kingdom <input type="checkbox"/></p> <p>Europe..... <input type="checkbox"/></p>	
--	--

<p>FM82x</p> <p>How long have you lived in this area?</p> <p><u>CAPI version XZ: SHOWCARD XZ</u> Please look at this card and tell me your answer.</p> <p><u>CAPI version XA, CATI and CAWI: Would you say ...</u> <u>[CAPI and CATI: READ OUT]</u></p> <p>1 Less than 12 months 2 12 months or more but less than 2 years 3 2 years or more but less than 3 years 4 3 years or more but less than 5 years 5 5 years or more but less than 10 years 6 10 years or more but less than 20 years 7 Or 20 years or longer</p> <p>----- SHOWCARD XZ: layout as above</p>	<p>FM82y</p> <p>How long have you lived in this area? Would you say ...</p> <p><u>[CAPI and CATI: READ OUT]</u></p> <p>1 Less than 3 years 2 3 years or more but less than 10 years 3 10 years or longer</p>
--	---

<p>N35x</p> <p>The next few questions are about the extent to which you agree or disagree with statements about your neighbourhood. Here is the first statement. This neighbourhood is not a bad place to live. Would you say you . . . <u>[CAPI and CATI: READ OUT]</u></p> <p>1 Strongly agree 2 Agree 3 Neither agree nor disagree 4 Disagree 5 Or strongly disagree?</p>	<p>N35y: same as N35x</p>
--	----------------------------------

<p>N36x</p> <p>Compared to other neighbourhoods, this neighbourhood has more properties that are in a poor state of repair. Would you say you . . . <u>[CAPI and CATI: READ OUT]</u></p>	
---	--

1 Strongly agree 2 Agree 3 Neither agree nor disagree 4 Disagree 5 Or strongly disagree?	
N37x Compared to other neighbourhoods, this neighbourhood does not suffer from things like litter, dog mess and graffiti. Would you say you . . . [CAPI and CATI]: READ OUT 1 Strongly agree 2 Agree 3 Neither agree nor disagree 4 Disagree 5 Or strongly disagree?	N37y: same as N37x
N38x Compared to other neighbourhoods, this neighbourhood has more properties that are well kept. Would you say you . . . [CAPI and CATI]: READ OUT 1 Strongly agree 2 Agree 3 Neither agree nor disagree 4 Disagree 5 Or strongly disagree?	N38y Compared to other neighbourhoods, would you say this neighbourhood has more properties that are in a poor state of repair, about the same number as other neighbourhoods or fewer properties that are in a poor state of repair? 1 More properties 2 Same number 3 Fewer properties
N39x Which of the following is closest to where you live? CAPI version XZ: Showcard XZ Please look at this card and tell me your answer. [CAPI version XA and CATI]: READ OUT 1 A primary school 2 A secondary school 3 A 6th form college 4 A river 5 A lake 6 A cinema 7 Or a theatre ----- SHOWCARD XZ: layout as above	N39y Which of the following is closest to where you live? [CAPI and CATI]: READ OUT 1 A school 2 A river or lake 3 Or a cinema or theatre
N40x Please tell me whether you consider your local shopping facilities to be . . . [CAPI and CATI]: READ OUT CAWI: Please indicate whether you consider your local shopping facilities to be . . .	N40y CAPI and CATI: Please tell me whether you consider your local shopping facilities to be poor or good? CAWI: Please indicate whether you consider your local shopping facilities to be poor or good?

1 Extremely poor	1 Poor GO TO N41y
2 Very poor	2 Good GO TO N42y
3 Poor	N41y
4 Good	Would this be poor, very poor or extremely poor?
5 Very good	1 Poor GO TO N43y
6 Or extremely good?	2 Very poor GO TO N43y
	3 Extremely poor GO TO N43y
	N42y
	Would this be good, very good or extremely good?
	1 Good
	2 Very good
	3 Extremely good

<p>N43x</p> <p><u>CAPI and CATI</u>: I would like you to tell me how satisfied or dissatisfied you are with local household waste collection, recycling collection and other recycling collection points. Would you say you are...</p> <p>[CAPI and CATI: READ OUT]</p> <p><u>CAWI</u>: Please indicate how satisfied or dissatisfied you are with local household waste collection, recycling collection and other recycling collection points. Would you say you are...</p> <p>1 Satisfied</p> <p>2 Neither satisfied nor dissatisfied</p> <p>3 Or dissatisfied?</p> <p>-----</p> <p>Web version:</p> <p>Satisfied.....o</p> <p>Neither satisfied nor dissatisfied..o</p> <p>Dissatisfied.....o</p>	<p>N43y</p> <p><u>CAPI and CATI</u>: I would like you to tell me how satisfied or dissatisfied you are with local household waste collection, recycling collection and other recycling collection points.</p> <p><u>CAPI version YZ and CATI</u>: Would you say you are...[READ OUT]</p> <p><u>CAPI version YA</u> : Showcard YA</p> <p>Please look at this card and tell me your answer.</p> <p><u>CAWI</u>: Please indicate how satisfied or dissatisfied you are with local household waste collection, recycling collection and other recycling collection points. Would you say you are...</p> <p>1 Very satisfied</p> <p>2 Moderately satisfied</p> <p>3 Slightly satisfied</p> <p>4 Neither satisfied nor dissatisfied</p> <p>5 Slightly dissatisfied</p> <p>6 Moderately dissatisfied</p> <p>7 Or very dissatisfied?</p> <p>-----</p> <p>SHOWCARD YA: layout equivalent to above</p> <p>Web version:</p> <p>Very satisfied.....o</p> <p>Moderately satisfied.....o</p> <p>Slightly satisfied.....o</p> <p>Neither satisfied nor dissatisfied...o</p> <p>Slightly dissatisfied.....o</p> <p>Moderately dissatisfied.....o</p> <p>Very dissatisfied.....o</p>
---	--

<p>N44x</p> <p>And how satisfied or dissatisfied are you with street cleaning? Would you say you are...</p>	<p>N44y</p> <p>And how satisfied or dissatisfied are you with street cleaning?</p>
--	---

<p>for improving the quality of your neighbourhood? Would you say . . . <u>[CAPI and CATI: READ OUT]</u></p> <p>1 Very important 2 Moderately important 3 Somewhat important 4 Or not important at all?</p>	
<p>N48x How important would better schools be for improving the quality of your neighbourhood? Would you say . . . <u>[CAPI and CATI: READ OUT]</u></p> <p>1 Very important 2 Moderately important 3 Somewhat important 4 Or not important at all?</p>	<p>N45y4 Better schools (Rank 1..7)</p>
<p>N49x How important would more or better facilities for leisure activities be for improving the quality of your neighbourhood? Would you say . . . <u>[CAPI and CATI: READ OUT]</u></p> <p>1 Very important 2 Moderately important 3 Somewhat important 4 Or not important at all?</p>	<p>N45y5 More / better facilities for leisure activities (Rank 1..7)</p>
<p>N50x How important would better transport links be for improving the quality of your neighbourhood? Would you say . . . <u>[CAPI and CATI: READ OUT]</u></p> <p>1 Very important 2 Moderately important 3 Somewhat important 4 Or not important at all?</p>	<p>N45y6 Better transport links (Rank 1..7)</p>
<p>N51x How important would more parking be for improving the quality of your neighbourhood? Would you say . . . <u>[CAPI and CATI: READ OUT]</u></p> <p>1 Very important 2 Moderately important 3 Somewhat important 4 Or not important at all?</p>	<p>N45y7 More parking spaces (Rank 1..7)</p> <p>-----</p> <p>SHOWCARD Y: layout as above</p> <p>Web version:</p> <p>Less traffic..... <input type="checkbox"/></p> <p>Less crime..... <input type="checkbox"/></p> <p>More / better shops..... <input type="checkbox"/></p> <p>Better schools..... <input type="checkbox"/></p> <p>More / better facilities for leisure activities..... <input type="checkbox"/></p>

	Better transport links..... <input type="checkbox"/> More parking spaces..... <input type="checkbox"/>
--	---

N52x How strongly do you agree or disagree with the following 3 statements. I would worry if housing were provided near my home for people with mental health problems leaving hospital. Would you say you ... <u>[CAPI and CATI: READ OUT]</u> 1 Strongly agree 2 Agree 3 Neither agree nor disagree 4 Disagree 5 Or strongly disagree?	N52y: same as N52x
---	---------------------------

N53x People who have serious mental health problems have just as much right to live in my neighbourhood as any other people. Would you say you ... <u>[CAPI and CATI: READ OUT]</u> 1 Strongly agree 2 Agree 3 Neither agree nor disagree 4 Disagree 5 Or strongly disagree?	N53y: same as N53x
--	---------------------------

N54x If housing were provided near your home for people who were leaving prison ... <u>[CAPI and CATI: READ OUT]</u> 1 Would you be concerned about your family's safety 2 Or would you feel that they have just as much right to live in your neighbourhood as any other people?	N54y I would be concerned for my family's safety if housing were provided near my home for people who were leaving prison. Would you say you ... <u>[CAPI and CATI: READ OUT]</u> 1 Strongly agree 2 Agree 3 Neither agree nor disagree 4 Disagree 5 Or strongly disagree?
	N55y People who have been in prison have just as much right to live in my neighbourhood as any other people. Would you say you ... <u>[CAPI and CATI: READ OUT]</u> 1 Strongly agree 2 Agree 3 Neither agree nor disagree 4 Disagree 5 Or strongly disagree?

C56x-C56x9 <u>CAPI and CAWI</u> : What are the things that you like about your neighbourhood? CODE ALL THAT APPLY (not asked in CATI) <u>CAPI</u> : SHOWCARD X		C56y What are the things that you like about your neighbourhood? Do you like your neighbourhood because of its community spirit? 1 Yes 2 No
C56x Its community spirit	0/1	
C56x2 It feels safe	0/1	C57y Do you like your neighbourhood because it feels safe? 1 Yes 2 No
C56x3 The neighbours	0/1	C58y Do you like your neighbourhood because of the neighbours? 1 Yes 2 No
C56x4 The character of its buildings	0/1	C59y Do you like your neighbourhood because of the character of its buildings? 1 Yes 2 No
C56x5 Its cleanliness	0/1	C60y Do you like your neighbourhood because of its cleanliness? 1 Yes 2 No
C56x6 Its location	0/1	C61y Do you like your neighbourhood because of its location? 1 Yes 2 No
C56x7 Its quietness	0/1	C62y Do you like your neighbourhood because it is quiet? 1 Yes 2 No
C56x8 Its transport facilities	0/1	C63y Do you like your neighbourhood because of its transport facilities? 1 Yes

<p>C56x9 <i>Something else</i> 0/1</p> <p>-----</p> <p>SHOWCARD X:</p> <ol style="list-style-type: none"> 1 Its community spirit 2 It feels safe 3 The neighbours 4 The character of its buildings 5 Its cleanliness 6 Its location 7 Its quietness 8 Its transport facilities <p>Web layout:</p> <p>Its community spirit.....[]</p> <p>It feels safe..... ..[]</p> <p>The neighbours.....[]</p> <p>The character of its buildings..... ..[]</p> <p>Its cleanliness..... ..[]</p> <p>Its location[]</p> <p>Its quietness[]</p> <p>Its transport facilities..... ..[]</p>	<p>2 No</p>
--	-------------

CAPI and CATI: I am now going to ask you some questions about financial management.

<p>FM64x</p> <p>To what extent do you agree or disagree with the following statements about making important financial decisions such as taking out a mortgage, loan or pension.</p> <p>I would rarely read all the small print before making important financial decisions. Would you say you ...</p> <p>[CAPI and CATI: READ OUT]</p> <ol style="list-style-type: none"> 1 Strongly agree 2 Agree 3 Neither agree nor disagree 4 Disagree 5 Or strongly disagree? 	<p>FM64y: same as FM64x</p>
<p>FM65x</p> <p>And how much do you agree or disagree with this statement.</p> <p>I would do a lot of research before making an important financial decision. Would you say you ...</p> <p>[CAPI and CATI: READ OUT]</p> <ol style="list-style-type: none"> 1 Strongly agree 2 Agree 3 Neither agree nor disagree 	<p>FM65y: same as FM65x</p>

4 Disagree 5 Or strongly disagree?	
---------------------------------------	--

FM66x And how much do you agree or disagree with this statement. I would rarely talk to a financial advisor before making an important financial decision. Would you say you ... [CAPI and CATI: READ OUT] 1 Strongly agree 2 Agree 3 Neither agree nor disagree 4 Disagree 5 Or strongly disagree?	FM66y: same as FM66x
--	-----------------------------

FM67x And how much do you agree or disagree with this statement. I definitely would talk to family and friends before making an important financial decision. Would you say you ... [CAPI and CATI: READ OUT] 1 Strongly agree 2 Agree 3 Neither agree nor disagree 4 Disagree 5 Or strongly disagree?	FM67y When making an important financial decision such as taking out a mortgage, loan or pension, how likely would you be to talk to family and friends before making an important decision. Would you say that you would. . . [CAPI and CATI: READ OUT] 1 Definitely talk to them 2 Probably talk to them 3 Probably not talk to them 4 Or definitely not talk to them
---	--

FM68x The next question is about grocery shopping which includes food, drinks, cleaning products, toiletries and household goods. CAPI: SHOWCARD X How often do you personally do grocery shopping? Please look at this card and tell me your answer. CATI: How often do you personally do grocery shopping, where 1 is every day and 7 is never? INTERVIEWER: WRITE IN NUMBER CHOSEN WHERE 1=EVERYDAY; 7=NEVER CAWI: How often do you personally do grocery shopping? 1 Every day 2 3 4 5 6 7 Never ----- SHOWCARD X:	FM68y The next question is about grocery shopping which includes food, drinks, cleaning products, toiletries and household goods. CAPI: SHOWCARD Y How often do you personally do grocery shopping? Please look at this card and tell me your answer. CATI and CAWI: How often do you personally do grocery shopping? Would you say ... [CATI: READ OUT] 1 Every day 2 On most days 3 Once a week 4 Two or three times a month 5 Once a month 6 Less than once a month 7 Never ----- SHOWCARD Y: layout as above
---	--

Every day 1 2 3 4 5 6 7	Never
Web version: every day 1 2 3 4 5 6 7 0 0 0 0 0 0 0	never

FM69x How much did your household spend last month on grocery shopping? Would you say ... [CAPI and CATI: READ OUT] 1 Less than £100 2 £100-£199 3 £200-£299 4 £300-£399 5 £400-£499 6 Or £500 or more?	FM69y How much did your household spend last month on grocery shopping? Was it more or less than £300? 1 Less than £300 (Go to FM70y) 2 More than £300 (Go to FM72y) FM70y Was it more or less than £200? 1 Less than £200 (Go to FM71y) 2 More than £200 (Go to FM74y) FM71y Was it more or less than £100? 1 Less than £100 (Go to FM74y) 2 More than £100 (Go to FM74y) FM72y Was it more or less than £400? 1 Less than £400 (Go to FM74y) 2 More than £400 FM73y Was it more or less than £500? 1 Less than £500 2 More than £500
--	--

FM74x CAPI: SHOWCARD X In the last two weeks, how many teas, coffees and other hot beverages have you purchased outside the home? Please look at this card and tell me your answer. CATI: In the last two weeks, how many teas, coffees and other hot beverages have you purchased outside the home, where 1 is more than 25 and 7 is none? INTERVIEWER: WRITE IN NUMBER CHOSEN WHERE 0=NONE; 6=25 OR MORE CAWI: In the last two weeks, how many teas, coffees and other hot beverages have you	FM74y In the last two weeks, how many teas, coffees and other hot beverages have you purchased outside the home? CAPI version YZ: SHOWCARD YZ 0 None 1 Less than 5 but more than one 2 Less than 10 but more than 5 3 Less than 15 but more than 10 4 Less than 20 but more than 15 5 Less than 25 but more than 20 6 More than 25 CAPI version YA: SHOWCARD YA
---	---

<p>purchased outside the home?</p> <p>0 None</p> <p>1</p> <p>2</p> <p>3</p> <p>4</p> <p>5</p> <p>6 More than 25</p> <p>-----</p> <p>SHOWCARD X:</p> <p>None More than 25</p> <p>0 1 2 3 4 5 6</p> <p>Web version:</p> <p>None 25 or more</p> <p>0 1 2 3 4 5 6</p> <p>o o o o o o o</p>	<p><u>CATI and CAWI:</u> In the last two weeks, how many teas, coffees and other hot beverages have you purchased outside the home?</p> <p>Would you say...</p> <p><u>[CATI: READ OUT]</u></p> <p>0 None</p> <p>1 At least 1 but less than 5</p> <p>2 At least 15 but less than 10</p> <p>3 At least 10 but less than 15</p> <p>4 At least 15 but less than 20</p> <p>5 At least 20 but less than 25</p> <p>6 25 or more</p> <p>-----</p> <p>SHOWCARDS YZ and YA: layouts as above</p>
--	---

<p>FM75x</p> <p>Which of these best describes your home? Would you say a . . .</p> <p><u>[CAPI and CATI: READ OUT]</u></p> <p>1 House</p> <p>2 Flat or maisonette</p> <p>3 Or other ?</p>	<p>FM75y</p> <p><u>CAPI version YA:</u> SHOWCARD YA - Which of these best describes your home?</p> <p>Please look at this card and tell me your answer.</p> <p><u>CAPI version YZ, CATI and CAWI:</u> Which of these best describes your home? Would you say a ...</p> <p><u>[CAPI and CATI: READ OUT]</u></p> <p>1 Detached house</p> <p>2 Semi-detached house</p> <p>3 Terraced house</p> <p>4 Bungalow</p> <p>5 Flat in a block of flats</p> <p>6 Flat in a house</p> <p>7 Maisonette</p> <p>8 Or other?</p> <p>-----</p> <p>SHOWCARD YA: layout as above</p>
---	---

<p>FM76x</p> <p>How much did your household spend last month in rent or mortgage for the accommodation you live in?</p> <p>Was it more or less than £300?</p> <p>1 Less than £300 (Go to FM77y)</p> <p>2 More than £300 (Go to FM79y)</p>	<p>FM76y</p> <p>How much did your household spend last month in rent or mortgage for the accommodation you live in? Would you say ...</p> <p><u>[CAPI and CATI: READ OUT]</u></p> <p>1 Less than £100</p> <p>2 £100-£199</p> <p>3 £200-£299</p> <p>4 £300-£399</p> <p>5 £400-£499</p> <p>6 Or £500 or more?</p>
<p>FM77x</p> <p>Was it more or less than £200?</p>	

1 Less than £200 (Go to FM78y) 2 More than £200 (Go to FM81y)	
FM78x Was it more or less than £100? 1 Less than £100 (Go to FM81y) 2 More than £100 (Go to FM81y)	
FM79x Was it more or less than £400? 1 Less than £400 (Go to FM81y) 2 More than £400 (Go to FM80y)	
FM80x Was it more or less than £500? 1 Less than £500 2 More than £500	

FM81x How much do you personally spend in an average month on leisure activities, and entertainment and hobbies, other than eating out? <u>CAPI version XZ</u> : SHOWCARD XZ - Please look at this card and tell me your answer. <u>CAPI version XA , CATI and CAWI</u> : Would you say ... [CAPI and CATI: READ OUT] 1 Less than £20 2 £20 - £39 3 £40 - £59 4 £60 - £79 5 £80 - £99 6 £100 - £119 7 £120 - £139 8 Or £140 or more? ----- SHOWCARD XZ : layout equivalent to above	FM81y How much do you personally spend in an average month on leisure activities, and entertainment and hobbies, other than eating out? Would you say ... [CAPI and CATI: READ OUT] 1 Less than £60 2 £60 - £99 3 Or £100 or more
---	---

Appendix III

Question Types and Question Formats

Question nbr	Variable name	Type of question	Response type	Sensitive	Difficult	Showcard in CAPI?	Answer details
Original_1	FM1mm1	Attitude	Ordinal	Y	N	N	
Original_2	FM2mm1	Attitude	Ordinal	Y	N	N	
Original_3	FM3mm1	Attitude	Ordinal	Y	Y	N	
Original_4	FM4mm1	Factual	Y/N	Y	N	N	
Original_5	FM5mm1x	Attitude	Ordinal	Y	N	N	Give number in 1..10
Original_6	FM6mm1	Factual	Ordinal	Y	Y	Y	
Original_7	FM7mm1	Factual	Ordinal	Y	Y	Y	
Original_8	FM8mm1	Factual	Y/N	N	N	N	
Original_9	H9a-pmm1	Factual	Nominal	Y	N	Y	
Original_10	H10mm1	Factual	Ordinal	N	Y	N	
Original_11	H11mm1	Attitude	Ordinal	N	N	Y	
Original_12	N12mm1	Attitude	Y/N	N	N	N	
Original_13	N13mm1	Attitude		N	N	N	
Original_14	N14mm1	Factual	Ordinal	N	N	N	
Original_15	N15mm1	Attitude	Ordinal	N	N	Y	
1	FM1mm2	Attitude	Ordinal	Y	N	N	
2	FM2mm2	Attitude	Ordinal	Y	N	N	
3	FM3mm2	Attitude	Ordinal	Y	Y	N	
4	FM4mm2	Factual	Y/N	Y	N	N	
5	FM5mm2x	Attitude	Ordinal	Y	N	N	Give number in 1..10
5	FM5mm2y	Attitude	Ordinal	Y	N	N	Select in end labelled list: 1 'Not important at all', 2, ..., 9, 10 'Very important'
6	FM6mm2	Factual	Ordinal	Y	Y	Y	
7	FM7mm2	Factual	Ordinal	Y	Y	Y	
8	FM8mm2	Factual	Y/N	N	N	N	
9	H9a-pmm2	Factual	Nominal	Y	N	Y	
10	H10mm2	Factual	Ordinal	N	Y	N	
11	H11mm2	Attitude	Ordinal	N	N	Y	
12	N12mm2	Attitude	Y/N	N	N	N	
13	N13mm2	Attitude		N	N	N	
14	N14mm2	Factual	Ordinal	N	N	N	
15	N15mm2	Attitude	Ordinal	N	N	Y	
16	GB16x	Satisfaction	Ordinal	N	Y	Y	end labelled 7 cat.
17	GB17x	Satisfaction	Ordinal	N	N	Y	end labelled 7 cat.
16	GB16y	Satisfaction	Ordinal	N	Y	Y	fully labelled 7 cat.
17	GB17y	Satisfaction	Ordinal	N	N	Y	fully labelled 7 cat.
18	GB18x	Attitude		N	Y (not well formed)	N	Select one out of 3 cat. (branching)
19	GB19x	Attitude		N	Y (not well formed)	N	Select one out of 3 cat. (branching)
20	GB20x	Attitude		N	Y (not well formed)	N	Select one out of 3 cat. (branching)
18	GB18y	Attitude		N	Y (not well)	Y	select one out of 7 cat.

Question nbr	Variable name	Type of question	Response type	Sensitive	Difficult	Showcard in CAPI?	Answer details
					formed)		
21	GB21x	Attitude	Y/N	N	Y (recall)	N	1 st of 8 Y/N
22	GB22x	Attitude	Y/N	N	Y (recall)	N	2 nd of 8 Y/N
23	GB23x	Attitude	Y/N	N	Y (recall)	N	3 rd of 8 Y/N
24	GB24x	Attitude	Y/N	N	Y (recall)	N	4 th of 8 Y/N
25	GB25x	Attitude	Y/N	N	Y (recall)	N	5 th of 8 Y/N
26	GB26x	Attitude	Y/N	N	Y (recall)	N	6 th of 8 Y/N
27	GB27x	Attitude	Y/N	N	Y (recall)	N	7 th of 8 Y/N
28	GB28x	Attitude	Y/N	N	Y (recall)	N	8 th of 8 Y/N
21	GB21y1	Attitude	0/1	N	Y (recall)	Y	1st in list of code all that apply 0/1 (8 items)
22	GB21y2	Attitude	0/1	N	Y (recall)	Y	2nd in list of code all that apply 0/1 (8 items)
23	GB21y3	Attitude	0/1	N	Y (recall)	Y	3rd in list of code all that apply 0/1 (8 items)
24	GB21y4	Attitude	0/1	N	Y (recall)	Y	4th in list of code all that apply 0/1 (8 items)
25	GB21y5	Attitude	0/1	N	Y (recall)	Y	5th in list of code all that apply 0/1 (8 items)
26	GB21y6	Attitude	0/1	N	Y (recall)	Y	6th in list of code all that apply 0/1 (8 items)
27	GB21y7	Attitude	0/1	N	Y (recall)	Y	7th in list of code all that apply 0/1 (8 items)
28	GB21y8	Attitude	0/1	N	Y (recall)	Y	8th in list of code all that apply 0/1 (8 items)
None of these	GB21y9	Attitude	0/1	N	Y (recall)	Y	extra in multicode: none of these
29	N29x	Attitude	Rank 1 to 6	N	Y (no opinion)	Y	1 st in list of 6 items to rank
30	N29x2	Attitude	Rank 1 to 6	N	Y (no opinion)	Y	2 nd in list of 6 items to rank
31	N29x3	Attitude	Rank 1 to 6	N	Y (no opinion)	Y	3 rd in list of 6 items to rank
32	N29x4	Attitude	Rank 1 to 6	N	Y (no opinion)	Y	4 th in list of 6 items to rank
33	N29x5	Attitude	Rank 1 to 6	N	Y (no opinion)	Y	5 th in list of 6 items to rank
34	N29x6	Attitude	Rank 1 to 6	N	Y (no opinion)	Y	6 th in list of 6 items to rank
29	N29y	Attitude	Rate 1 to 4	N	Y (no opinion)	N	Rate item 1
30	N30y	Attitude	Rate 1 to 4	N	Y (no opinion)	N	Rate item 2
31	N31y	Attitude	Rate 1 to 4	N	Y (no opinion)	N	Rate item 3
32	N32y	Attitude	Rate 1 to 4	N	Y (no opinion)	N	Rate item 4
33	N33y	Attitude	Rate 1 to 4	N	Y (no opinion)	N	Rate item 5
34	N34y	Attitude	Rate 1 to 4	N	Y (no opinion)	N	Rate item 6

Question nbr	Variable name	Type of question	Response type	Sensitive	Difficult	Showcard in CAPI?	Answer details
82	FM82xz	Factual	Ordinal	N	N	Y	Select 1 in long list (7 intervals) – showcard
82	FM82xa	Factual	Ordinal	N	N	N	Select 1 in long list (7 intervals) – no showcard
82	FM82y	Factual	Ordinal	N	N	N	Select 1 in short list (3 intervals) – no showcard
35	N35x	Attitude	A/D (5)	N	Y	N	Agree/Disagree 5 cat.
36	N36x	Attitude	A/D (5)	N	Y	N	Agree/Disagree 5 cat.
37	N37x	Attitude	A/D (5)	N	Y	N	Agree/Disagree 5 cat.
38	N38x	Attitude	A/D (5)	N	Y	N	Agree/Disagree 5 cat.
35	N35y	Attitude	A/D (5)	N	Y	N	Agree/Disagree 5 cat.
37	N37y	Attitude	A/D (5)	N	Y	N	Agree/Disagree 5 cat.
38	N38y	Attitude		N	Y	N	Balanced format - select 1 in 3 statements
39	N39xz	Factual	Nominal	N	Y	Y	Select 1 in long list (7 places) – showcard
40	N39xa	Factual	Nominal	N	Y	N	Select 1 in long list (7 places) – no showcard
39	N39y	Factual	Nominal	N	Y	N	Select 1 in short list (3 places)
40	N40x	Attitude		N	N (well formed attitudes)	N	Rating (6 cat.) no branching
40	N40y	Attitude		N	N (well formed attitudes)	N	Rating (2 cat.) with branching
41	N41y	Attitude		N	N (well formed attitudes)	N	Rating (3 cat.) - branching
42	N42y	Attitude		N	N (well formed attitudes)	N	Rating (3 cat.) - branching
43	N43x	Attitude	Ordinal	N	Y	N	Satisfaction scale 3 cat.
44	N44x	Attitude	Ordinal	N	N	N	Satisfaction scale 3 cat.
43	N43yz	Attitude	Ordinal	N	Y	N	Satisfaction scale 7 cat. - no showcard
43	N43ya	Attitude	Ordinal	N	Y	Y	Satisfaction scale 7 cat. - showcard
44	N44yz	Attitude	Ordinal	N	N	N	Satisfaction scale 7 cat. - no showcard
44	N44ya	Attitude	Ordinal	N	N	Y	Satisfaction scale 7 cat. – showcard
45	N45x	Attitude	Rate 1 to 4	N	N	N	Rate item 1
46	N46x	Attitude	Rate 1 to 4	N	N	N	Rate item 2
47	N47x	Attitude	Rate 1 to 4	N	N	N	Rate item 3

Question nbr	Variable name	Type of question	Response type	Sensitive	Difficult	Showcard in CAPI?	Answer details
48	N48x	Attitude	Rate 1 to 4	N	N	N	Rate item 4
49	N49x	Attitude	Rate 1 to 4	N	N	N	Rate item 5
50	N50x	Attitude	Rate 1 to 4	N	N	N	Rate item 6
51	N51x	Attitude	Rate 1 to 4	N	N	N	Rate item 7
45	N45y	Attitude	Rank 1 to 7	N	N	Y	1 st in list of 7 items to rank
46	N45y2	Attitude	Rank 1 to 7	N	N	Y	2 nd in list of 7 items to rank
47	N45y3	Attitude	Rank 1 to 7	N	N	Y	3 rd in list of 7 items to rank
48	N45y4	Attitude	Rank 1 to 7	N	N	Y	4 th in list of 7 items to rank
49	N45y5	Attitude	Rank 1 to 7	N	N	Y	5 th in list of 7 items to rank
50	N45y6	Attitude	Rank 1 to 7	N	N	Y	6 th in list of 7 items to rank
51	N45y7	Attitude	Rank 1 to 7	N	N	Y	7 th in list of 7 items to rank
52	N52x	Attitude	A/D (5)	Y	N	N	Agree/Disagree 5 cat.
53	N53x	Attitude	A/D (5)	Y	N	N	Agree/Disagree 5 cat.
52	N52y	Attitude	A/D (5)	Y	N	N	Agree/Disagree 5 cat.
53	N53y	Attitude	A/D (5)	Y	N	N	Agree/Disagree 5 cat.
54	N54x	Attitude		Y	N	N	Balanced format - select 1 in 2 statements
54	N54y	Attitude	A/D (5)	Y	N	N	Agree/Disagree 5 cat. for 1 st statement
55	N55y	Attitude	A/D (5)	Y	N	N	Agree/Disagree 5 cat. for 2 nd statement
56	C56x1	Attitude	0/1	N	N	Y	1st in list of code all that apply 0/1 (8 items)
57	C56x2	Attitude	0/1	N	N	Y	2nd in list of code all that apply 0/1 (8 items)
58	C56x3	Attitude	0/1	N	N	Y	3rd in list of code all that apply 0/1 (8 items)
59	C56x4	Attitude	0/1	N	N	Y	4th in list of code all that apply 0/1 (8 items)
60	C56x5	Attitude	0/1	N	N	Y	5th in list of code all that apply 0/1 (8 items)
61	C56x6	Attitude	0/1	N	N	Y	6th in list of code all that apply 0/1 (8 items)
62	C56x7	Attitude	0/1	N	N	Y	7th in list of code all that apply 0/1 (8 items)
63	C56x8	Attitude	0/1	N	N	Y	8th in list of code all that apply 0/1 (8 items)
extra	C56x9	Attitude	0/1	N	N	Y	extra in multicode: other
56	C56y	Attitude	Y/N	N	N	N	1 st of 8 Y/N

Question nbr	Variable name	Type of question	Response type	Sensitive	Difficult	Showcard in CAPI?	Answer details
57	C57y	Attitude	Y/N	N	N	N	2 nd of 8 Y/N
58	C58y	Attitude	Y/N	N	N	N	3 rd of 8 Y/N
59	C59y	Attitude	Y/N	N	N	N	4 th of 8 Y/N
60	C60y	Attitude	Y/N	N	N	N	5 th of 8 Y/N
61	C61y	Attitude	Y/N	N	N	N	6 th of 8 Y/N
62	C62y	Attitude	Y/N	N	N	N	7 th of 8 Y/N
63	C63y	Attitude	Y/N	N	N	N	8 th of 8 Y/N
64	FM64x	Attitude/ factual	A/D (5)	N	N	N	Agree/Disagree 5 cat.
65	FM65x	Attitude/ factual	A/D (5)	N	N	N	Agree/Disagree 5 cat.
66	FM66x	Attitude/ factual	A/D (5)	N	N	N	Agree/Disagree 5 cat.
64	FM64y	Attitude/ factual	A/D (5)	N	N	N	Agree/Disagree 5 cat.
65	FM65y	Attitude/ factual	A/D (5)	N	N	N	Agree/Disagree 5 cat.
66	FM66y	Attitude/ factual	A/D (5)	N	N	N	Agree/Disagree 5 cat.
67	FM67x	Attitude/ factual	A/D (5)	N	N	N	Agree/Disagree 5 cat.
67	FM67y	Attitude/ factual		N	N	N	Balanced format - select 1 in 4 statements
68	FM68x	Behavioural	Freq response	N	N	Y	end labelled 7 cat.
68	FM68y	Behavioural	Freq response	N	N	Y	fully labelled 7 cat.
69	FM69x	Factual		N	Y (recall)	N	Select 1 in 6 cat. – no branching
69	FM69y	Factual		N	Y (recall)	N	Select 1 in 2 cat. with branching
70	FM70y	Factual		N	Y (recall)	N	Select 1 in 2 cat. with branching
71	FM71y	Factual		N	Y (recall)	N	Select 1 in 2 cat. - branching
72	FM72y	Factual		N	Y (recall)	N	Select 1 in 2 cat. with branching
73	FM73y	Factual		N	Y (recall)	N	Select 1 in 2 cat. - branching
74	FM74x	Behavioural	Freq response	N	Y	Y	end labelled 6 cat.
74	FM74yz	Behavioural	Freq response	N	Y	Y	fully labelled 6 cat. showcard Z
74	FM74ya	Behavioural	Freq response	N	Y	Y	fully labelled 6 cat. showcard A
75	FM75x	Factual	Nominal	N	N	N	Select 1 in short list (3 cat.)
75	FM75yz	Factual	Nominal	N	N	N	Select 1 in long list (8 cat.) – no showcard
75	FM75ya	Factual	Nominal	N	N	Y	Select 1 in long list (8 cat.) - showcard
76	FM76x	Factual		N	N	N	Select 1 in 2 intervals with branching
77	FM77x	Factual		N	N	N	Select 1 in 2 intervals with branching
78	FM78x	Factual		N	N	N	Select 1 in 2 intervals -

Question nbr	Variable name	Type of question	Response type	Sensitive	Difficult	Showcard in CAPI?	Answer details
							branching
79	FM79x	Factual		N	N	N	Select 1 in 2 intervals with branching
80	FM80x	Factual		N	N	N	Select 1 in 2 intervals - branching
76	FM76y	Factual		N	N	N	Select 1 in 6 intervals – no branching
81	FM81xz	Factual	Ordinal	N	Y	Y	Select 1 in long list (8 intervals) - showcard
81	FM81xa	Factual	Ordinal	N	Y	N	Select 1 in long list (8 intervals) - no showcard
81	FM81y	Factual	Ordinal	N	Y	N	Select 1 in short list (3 intervals)

Appendix IV

List of variable names and labels

* variables present only in the NatCen Omnibus dataset

** variables present only in the BHPSdataset

Respondent identifier, socio-demographic descriptors and use of internet

IDnumber	Archive respondent ID number
RespSex	Sex of respondent
RspAgBnd	Banded age of respondent
ILO1*	Derived variable - in employment (1)
EconSt2rec**	Respondent's employment status (4 cat.)
HEdQual*	Highest educational qualification obtained (9 cat.)
HEdQualrec**	Highest educational qualification obtained (5 cat.)
Tenure2*	Household tenure (2)
Tenure**	Household tenure (grouped)
NSSEC5*	NS-SEC analytic classes (5)
Nssec**	NS-SEC analytic classes (5)
EthnGrp*	Respondent's ethnicity (grouped)
Ethnic**	Respondent's ethnicity (grouped)
RespMst2*	Respondent's marital status (grouped)
RespMstrec**	Respondent's marital status (grouped)
Intacc	How often respondent uses the internet for personal use

Questionnaire variables

IntMode	Interviewing mode (CAPI/CATI/CAWI)
XYRoute	X Y routing
ZARoute	Z A sub-routing
FM1mm1*	How managing financially these days (original CAPI)
FM2mm1*	Better/worse off financially than a year ago (original CAPI)
FM3mm1*	Better/worse off financially a year from now (original CAPI)
FM4mm1*	Whether save (original CAPI)
FM5mm1x*	Rate importance of having lot of money - nbr 1 to 10 (original CAPI)
FM6mm1*	How much spend on food in avge month (original CAPI with showcard)
FM7mm1*	How frequently drink (original CAPI with showcard)
FM8mm1*	Whether access to car (original CAPI)
H9amm1*	Health prbs: None (original CAPI with showcard)
H9bmm1*	Health prbs/disab. connected with arms/legs/back etc. (original CAPI with showcard)
H9cmm1*	Health prbs: difficulty in seeing excl. glasses for normal size print (original CAPI with showcard)
H9dmm1*	Health prbs: difficulty in hearing (original CAPI with showcard)
H9emm1*	Health prbs: skin conditions/allergies (original CAPI with showcard)
H9fmm1*	Health prbs: chest/breathing prbs, asthma etc (original CAPI with showcard)
H9gmm1*	Health prbs: heart/high BP/blood circulation prbs (original CAPI with showcard)
H9hmm1*	Health prbs: stomach/liver/kidneys or digestive prbs (original CAPI with showcard)
H9imm1*	Health prbs: diabetes (original CAPI with showcard)
H9jmm1*	Health prbs: anxiety/depression/psychiatric prbs (original CAPI with showcard)
H9kmm1*	Health prbs: alcohol/drug related prbs (original CAPI with showcard)
H9lmm1*	Health prbs: epilepsy (original CAPI with showcard)
H9mmm1*	Health prbs: migraine/freqt headaches (original CAPI with showcard)
H9nmm1*	Health prbs: cancer (original CAPI with showcard)
H9omm1*	Health prbs: stroke (original CAPI with showcard)
H9pmm1*	Health prbs: Other (original CAPI with showcard)
H10mm1*	Freqcy talked to/visited doctor in past year (original CAPI)
H11mm1*	Rate local area medical facilities (original CAPI with showcard)
N12mm1*	Whether like living in this neighbourhood (original CAPI)
N13mm1*	Whether would choose to move (original CAPI)
N14mm1*	Freqcy talk to neighbours (original CAPI)

N15mm1*	Agree/Disag: People in GB too ready to criticise their country (original CAPI with showcard)
FM1mm2	How managing financially these days (follow-up)
FM2mm2	Better/worse off financially than a year ago (follow-up)
FM3mm2	Better/worse off financially a year from now (follow-up)
FM4mm2	Whether save (follow-up)
FM5mm2x	Rate importance of having lot of money - nbr 1 to 10 (follow-up)
FM5mm2y	Rate importance of having lot of money - end-labelled scale 1 to 10 (follow-up in CAWI only)
FM6mm2	How much spend on food in avge month (follow-up - CAPI with showcard)
FM7mm2	How frequently drink (follow-up - CAPI with showcard)
FM8mm2	Whether access to car (follow-up)
H9amm2	Health prbs: None (follow-up - CAPI with showcard)
H9bmm2	Health prbs/disab. connected with arms/legs/back, etc. (follow-up - CAPI with showcard)
H9cmm2	Health prbs: difficulty in seeing excl. glasses for normal size print (follow-up - CAPI with showcard)
H9dmm2	Health prbs: difficulty in hearing (follow-up - CAPI with showcard)
H9emm2	Health prbs: skin conditions/allergies (follow-up - CAPI with showcard)
H9fmm2	Health prbs: chest/breathing prbs, asthma etc (follow-up - CAPI with showcard)
H9gmm2	Health prbs: heart/high BP/blood circulation prbs (follow-up - CAPI with showcard)
H9hmm2	Health prbs: stomach/liver/kidneys or digestive prbs (follow-up - CAPI with showcard)
H9imm2	Health prbs: diabetes (follow-up - CAPI with showcard)
H9jmm2	Health prbs: anxiety/depression/psychiatric prbs (follow-up - CAPI with showcard)
H9kmm2	Health prbs: alcohol/drug related prbs (follow-up - CAPI with showcard)
H9lmm2	Health prbs: epilepsy (follow-up - CAPI with showcard)
H9mmm2	Health prbs: migraine/freqt headaches (follow-up - CAPI with showcard)
H9nmm2	Health prbs: cancer (follow-up - CAPI with showcard)
H9omm2	Health prbs: stroke (follow-up - CAPI with showcard)
H9pmm2	Health prbs: Other (follow-up - CAPI with showcard)
H10mm2	How frequently talked to/visited doctor in past year (follow-up)
H11mm2	Rate local area medical facilities (follow-up - CAPI with showcard)
N12mm2	Whether like living in this neighbourhood (follow-up)
N13mm2	Whether would choose to move (follow-up)
N14mm2	Freqcy talk to neighbours (follow-up)
N15mm2	Agree/Disag: People in GB too ready to criticise their country (follow-up - CAPI with showcard)
GB16x	Satisf. with democracy/personal freedom in GB - end labelled 7 cat. (CAPI with showcard)
Gb17x	Satisf. with present state of economy in GB - end labelled 7 cat. (CAPI with showcard)
GB18x	Opinion on std of living since last gnl election - 3 cat. - branching
GB19x	If think std of living increased, how much - 3 cat. - cont. branching
GB20x	If think std of living decreased, how much - 3 cat. - cont. branching
GB21x	Whether think increasing pensions would reduce poverty
GB22x	Whether think investing in education for children would reduce poverty
GB23x	Whether think improving access to child care would reduce poverty
GB24x	Whether think redistribution of wealth would reduce poverty
GB25x	Whether think increasing trade union rights would reduce poverty
GB26x	Whether think reducing discrimination would reduce poverty
GB27x	Whether think increasing income support would reduce poverty
GB28x	Whether think investing in job creation would reduce poverty
GB16y	Satisf. with democracy/personal freedom /in GB - fully labelled 7 cat. (CAPI with showcard)
GB17y	Satisf. with present state of economy in GB - fully labelled 7 cat. (CAPI with showcard)
GB18y	Opinion on std of living since last gnl election - 7 cat. no branching (CAPI with showcard)
GB21y1	Ways to reduce poverty multiple choice: increasing pensions (CAPI with showcard)
GB21y2	Ways to reduce poverty multiple choice: investing in education for children (CAPI with showcard)
GB21y3	Ways to reduce poverty multiple choice: improving access to child care (CAPI with showcard)
GB21y4	Ways to reduce poverty multiple choice: redistribution of wealth (CAPI with showcard)
GB21y5	Ways to reduce poverty multiple choice: increasing trade union rights (CAPI with showcard)
GB21y6	Ways to reduce poverty multiple choice: reducing discrimination (CAPI with showcard)
GB21y7	Ways to reduce poverty multiple choice: increasing income support (CAPI with showcard)
GB21y8	Ways to reduce poverty multiple choice: investing in job creation (CAPI with showcard)
GB21y9	Ways to reduce poverty multiple choice: none of these
N29x	Rank importance of living in your street - Rank 1..6 (CAPI with showcard)
N29x2	Rank importance of living in your city/town - Rank 1..6 (CAPI with showcard)
N29x3	Rank importance of living in your county/region - Rank 1..6 (CAPI with showcard)
N29x4	Rank importance of living in your country - Rank 1..6 (CAPI with showcard)
N29x5	Rank importance of living in the UK - Rank 1..6 (CAPI with showcard)

N29x6	Rank importance of living in Europe - Rank 1..6 (CAPI with showcard)
FM82x	How long lived in area - 7 cat. - original variable - no ZA split
FM82xz*	How long lived in area - 7 cat. (CAPI with showcard)
FM82xa	How long lived in area - 7 cat. (CAPI no showcard)
N35x	Agree/Disag: Neighbourhood not a bad place to live - 5 cat.
N36x	Agree/Disag: Neighbourhood has more properties in poor state of repair - 5 cat.
N37x	Agree/Disag: Neighbourhood does not suffer from things like litter etc - 5 cat.
N38x	Agree/Disag: Neighbourhood has more properties that are well kept - 5 cat.
N39x	Place closest to where you live - 7 cat. - original variable - no ZA split
N39xz*	Place closest to where you live - 7 cat. (CAPI with showcard)
N39xa	Place closest to where you live - 7 cat. (CAPI no showcard)
N40x	Rate local shopping facilities - 6 cat. - no branching
N43x	Satisf. with local household waste collection/recycling - 3 cat. (CAPI no showcard)
N44x	Satisf. with street cleaning - 3 cat. (CAPI no showcard)
N45x	Rate importance for neighbourhood improvmt: less traffic - 4 cat. (CAPI no showcard)
N46x	Rate importance for neighbourhood improvmt: less crime - 4 cat. (CAPI no showcard)
N47x	Rate importance for neighbourhood improvmt: more/better shops - 4 cat. (CAPI no showcard)
N48x	Rate importance for neighbourhood improvmt: more/better schools- 4 cat. (CAPI no showcard)
N49x	Rate importance for neighbourhood improvmt: more/better leisure facilities - 4 cat. (CAPI no showcard)
N50x	Rate importance for neighbourhood improvmt: better transport links - 4 cat. (CAPI no showcard)
N51x	Rate importance for neighbourhood improvmt: more parking spaces - 4 cat. (CAPI no showcard)
N52x	Agree/Disag: Worry if housing were provided near home for people with mental hlth prbs out of hospital - 5 cat.
N53x	Agree/Disag: People with serious mental hlth prbs have as much right to live in neighbourhood as others - 5 cat.
N54x	Feeling if housing were provided near home for people who were leaving prison - 2 cat.
N29y	Rate importance of living in your street - 4 cat. (CAPI no showcard)
N30y	Rate importance of living in your city/town - 4 cat. (CAPI no showcard)
N31y	Rate importance of living in your county/region - 4 cat. (CAPI no showcard)
N32y	Rate importance of living in your country - 4 cat. (CAPI no showcard)
N33y	Rate importance of living in the UK - 4 cat. (CAPI no showcard)
N34y	Rate importance of living in Europe - 4 cat. (CAPI no showcard)
FM82y	How long lived in area - 3 cat. (CAPI no showcard)
N35y	Agree/Disag: Neighbourhood is not a bad place to live 5 cat.
N37y	Agree/Disag: Neighbourhood does not suffer from things like litter etc - 5 cat.
N38y	Neighbourhood has more/same number/fewer properties in poor state of repair
N39y	Place closest to where you live - 3 cat.
N40y	Rate local shopping facilities - 2 cat. - branching
N41y	If think poor local shopping facilities, how poor - 3 cat. - cont. branching
N42y	If think good local shopping facilities, how good - 3 cat. - cont. branching
N43y	Satisf. with local household waste collection/ recycling - 7 cat. - original variable - no ZA split
N43yz	Satisf. with local household waste collection/ recycling - 7 cat. (CAPI no showcard)
N43ya*	Satisf. with local household waste collection/ recycling - 7 cat. (CAPI with showcard)
N44y	Satisf. with street cleaning - 7 cat. - original variable - no ZA split
N44yz	Satisf. with street cleaning - 7 cat. (CAPI no showcard)
N44ya*	Satisf. with street cleaning - 7 cat. (CAPI with showcard)
N45y	Rank importance for neighbourhood improvmt: less traffic- Rank 1..7 (CAPI with showcard)
N45y2	Rank importance for neighbourhood improvmt: less crime - Rank 1..7 (CAPI with showcard)
N45y3	Rank importance for neighbourhood improvmt: more/better shops - Rank 1..7 (CAPI with showcard)
N45y4	Rank importance for neighbourhood improvmt: more/better schools - Rank 1..7 (CAPI with showcard)
N45y5	Rank importance for neighbourhood improvmt: more/better leisure facilities - Rank 1..7 (CAPI with showcard)
N45y6	Rank importance for neighbourhood improvmt: better transport links - Rank 1..7 (CAPI with showcard)
N45y7	Rank importance for neighbourhood improvmt: more parking spaces - Rank 1..7 (CAPI with showcard)
N52y	Agree/Disag: Worry if housing were provided near home for people with mental hlth prbs leaving hospital - 5 cat.
N53y	Agree/Disag: People with serious mental hlth prbs have as much right to live in neighbourhood as others - 5 cat

N54y	Agree/Disag: Worry if housing were provided near home for people leaving prison - 5 cat.
N55y	Agree/Disag: People leaving prison have as much right to live in neighbourhood as others - 5 cat.
C56x1	Like in neighbourhood multiple choice: its community spirit (CAPI with showcard)
C56x2	Like in neighbourhood multiple choice: it feels safe (CAPI with showcard)
C56x3	Like in neighbourhood multiple choice: the neighbours (CAPI with showcard)
C56x4	Like in neighbourhood multiple choice: its buildings (CAPI with showcard)
C56x5	Like in neighbourhood multiple choice: its cleanliness (CAPI with showcard)
C56x6	Like in neighbourhood multiple choice: its location (CAPI with showcard)
C56x7	Like in neighbourhood multiple choice: its quietness (CAPI with showcard)
C56x8	Like in neighbourhood multiple choice: its transport facilities (CAPI with showcard)
C56x9	Like in neighbourhood multiple choice: something else
C56y	Whether like neighbourhood because of its community spirit
C57y	Whether like neighbourhood because it feels safe
C58y	Whether like neighbourhood because of the neighbours
C59y	Whether like neighbourhood because of its buildings
C60y	Whether like neighbourhood because of its cleanliness
C61y	Whether like neighbourhood because of its location
C62y	Whether like neighbourhood because of it is quiet
C63y	Whether like neighbourhood because of its transport facilities
FM64x	Agree/Disag: Would rarely read small print before important financial decision - 5 cat.
FM65x	Agree/Disag: Would do a lot of research before important financial decision - 5 cat.
FM66x	Agree/Disag: Would rarely talk to financial advisor before important financial decision - 5 cat.
FM67x	Agree/Disag: Would talk to family/friends before important financial decision - 5 cat.
FM68x	How frequently do grocery shopping - end labelled 7 cat. (CAPI with showcard)
FM69x	Hhold expenditure on grocery shopping last month - 6 cat.
FM74x	How many hot beverages bought outside home - end labelled 6 cat. (CAPI with showcard XZ)
FM75x	Best description of home - 3 cat. (CAPI no showcard)
FM76x	More or less than £300 in hhold rent/mortgage last month (branching)
FM77x	More or less than £200 in hhold rent/mortgage last month (branching)
FM78x	More or less than £100 in hhold rent/mortgage last month (cont. branching)
FM79x	More or less than £400 in hhold rent/mortgage last month (branching)
FM80x	More or less than £500 in hhold rent/mortgage last month (cont. branching)
FM81x	Personal expenditure on leisure/entertainment last month - 8 cat. - original variable - no ZA split
FM81xz*	Personal expenditure on leisure/entertainment last month - 8 cat. (CAPI with showcard)
FM81xa	Personal expenditure on leisure/entertainment last month - 8 cat. (CAPI no showcard)
FM64y	Agree/Disag: Would rarely read small print before important financial decision - 5 cat.
FM65y	Agree/Disag: Would do a lot of research before important financial decision - 5 cat.
FM66y	Agree/Disag: Would rarely talk to financial advisor before important financial decision - 5 cat.
FM67y	How likely would talk to family/friends before important financial decision - 4 cat.
FM68y	How frequently do grocery shopping - fully labelled 7 cat. (CAPI with showcard)
FM69y	More or less than £300 on hhold grocery shopping last month (branching)
FM70y	More or less than £200 on hhold grocery shopping last month (branching)
FM71y	More or less than £100 on hhold grocery shopping last month (cont. branching)
FM72y	More or less than £400 on hhold grocery shopping last month (branching)
FM73y	More or less than £500 on hhold grocery shopping last month (cont. branching)
FM74y	How many hot beverages bought outside home - fully labelled 6 cat. - original variable - no ZA split
FM74yz*	How many hot beverages bought outside home - fully labelled 6 cat. (CAPI with showcard YZ)
FM74ya	How many hot beverages bought outside home - fully labelled 6 cat. (CAPI with showcard YA)
FM75y	Best description of home - 8 cat. - original variable - no ZA split
FM75yz	Best description of home - 8 cat. (CAPI no showcard)
FM75ya*	Best description of home - 8 cat. (CAPI with showcard)
FM76y	Hhold expenditure in rent/mortgage last month - 6 cat.
FM81y	Personal expenditure on leisure/entertainment last month - 3 cat. (CAPI no showcard)

Appendix V

Datasets Questionnaire layout

Question nbr	Variable name in NatCen Omnibus CAPI		Variable name in NatCen Omnibus CATI	Variable name in NatCen Omnibus CAWI	Variable name in BHPS CATI	Variable name in BHPS CAWI
Original_1	FM1mm1		FM1mm1	FM1mm1		FM1mm1
Original_2	FM2mm1		FM2mm1	FM2mm1		
Original_3	FM3mm1		FM3mm1	FM3mm1		
Original_4	FM4mm1		FM4mm1	FM4mm1		
Original_5	FM5mm1x		FM5mm1x	FM5mm1x		
Original_6	FM6mm1		FM6mm1	FM6mm1		
Original_7	FM7mm2		FM7mm2	FM7mm2		
Original_8	FM8mm1		FM8mm1	FM8mm1		
Original_9	H9a-pmm1		H9a-pmm1	H9a-pmm1		
Original_10	H10mm1		H10mm1	H10mm1		
Original_11	H11mm1		H11mm1	H11mm1		
Original_12	N12mm1		N12mm1	N12mm1		
Original_13	N13mm1		N13mm1	N13mm1		
Original_14	N14mm1		N14mm1	N14mm1		
Original_15	N15mm1		N15mm1	N15mm1		
1	FM1mm2		FM1mm2	FM1mm2	FM1mm2	FM1mm2
2	FM2mm2		FM2mm2	FM2mm2	FM2mm2	FM2mm2
3	FM3mm2		FM3mm2	FM3mm2	FM3mm2	FM3mm2
4	FM4mm2		FM4mm2	FM4mm2	FM4mm2	FM4mm2
5	FM5mm2x		FM5mm2x	FM5mm2x FM5mm2y	FM5mm2x	FM5mm2x FM5mm2y
6	FM6mm2			FM6mm2		FM6mm2
7	FM7mm2		FM7mm2	FM7mm2	FM7mm2	FM7mm2
8	FM8mm2		FM8mm2	FM8mm2	FM8mm2	FM8mm2
9	H9a-pmm2		H9a-pmm2	H9a-pmm2	H9a-pmm2	H9a-pmm2
10	H10mm2		H10mm2	H10mm2	H10mm2	H10mm2
11	H11mm2		H11mm2	H11mm2	H11mm2	H11mm2
12	N12mm2		N12mm2	N12mm2	N12mm2	N12mm2
13	N13mm2		N13mm2	N13mm2	N13mm2	N13mm2
14	N14mm2		N14mm2	N14mm2	N14mm2	N14mm2
15	N15mm2		N15mm2	N15mm2	N15mm2	N15mm2
16	GB16x	GB16y	GB16x	GB16y	GB16x	GB16y
17	GB17x	GB17y	GB17x	GB17y	GB17x	GB17y
18	GB18x	GB18y	GB18x	GB18y	GB18x	GB18y
19	GB19x	GB20x	GB19x	GB20x	GB19x	GB20x
20						
21	GB21x	GB21y1	GB21x	GB21y1	GB21x	GB21y1
22	GB22x	GB21y2	GB22x	GB21y2	GB22x	GB21y2
23	GB23x	GB21y3	GB23x	GB21y3	GB23x	GB21y3
24	GB24x	GB21y4	GB24x	GB21y4	GB24x	GB21y4
25	GB25x	GB21y5	GB25x	GB21y5	GB25x	GB21y5
26	GB26x	GB21y6	GB26x	GB21y6	GB26x	GB21y6
27	GB27x	GB21y7	GB27x	GB21y7	GB27x	GB21y7
28	GB28x	GB21y8	GB28x	GB21y8	GB28x	GB21y8
29	N29x	N29y	N29x	N29y	N29x	N29y
30	N29x2	N30y	N29x2	N30y	N29x2	N30y
31	N29x3	N31y	N29x3	N31y	N29x3	N31y
32	N29x4	N32y	N29x4	N32y	N29x4	N32y
33	N29x5	N33y	N29x5	N33y	N29x5	N33y
34	N29x6	N34y	N29x6	N34y	N29x6	N34y
82	FM82xz FM82xa	FM82y	FM82xa	FM82y	FM82xa	FM82y
35	N35x	N35y	N35x	N35y	N35x	N35y
36	N36x		N36x		N36x	
37	N37x	N37y	N37x	N37y	N37x	N37y
38	N38x	N38y	N38x	N38y	N38x	N38y
39	N39xz N39xa	N39y	N39xa	N39y	N39xa	N39y
40	N40x	N40y	N40x	N40y	N40x	N40y
41		N41y		N41y		N41y
42		N42y		N42y		N42y
43	N43x	N43yz	N43x	N43yz	N43x	N43yz
44	N44x	N44yz	N44x	N44yz	N44x	N44yz
45	N45x	N45y	N45x	N45y	N45x	N45y
46	N46x	N45y2	N46x	N45y2	N46x	N45y2
47	N47x	N45y3	N47x	N45y3	N47x	N45y3
48	N48x	N45y4	N48x	N45y4	N48x	N45y4
49	N49x	N45y5	N49x	N45y5	N49x	N45y5
50	N50x	N45y6	N50x	N45y6	N50x	N45y6
51	N51x	N45y7	N51x	N45y7	N51x	N45y7
52	N52x	N52y	N52x	N52y	N52x	N52y
53	N53x	N53y	N53x	N53y	N53x	N53y
54	N54x	N54y	N54x	N54y	N54x	N54y
55		N55y		N55y		N55y
56	C56x1	C56y	C56x1	C56y	C56x1	C56y
57	C56x2	C57y	C56x2	C57y	C56x2	C57y
58	C56x3	C58y	C56x3	C58y	C56x3	C58y
59	C56x4	C59y	C56x4	C59y	C56x4	C59y
60	C56x5	C60y	C56x5	C60y	C56x5	C60y
61	C56x6	C61y	C56x6	C61y	C56x6	C61y
62	C56x7	C62y	C56x7	C62y	C56x7	C62y
63	C56x8	C63y	C56x8	C63y	C56x8	C63y
64	FM64x	FM64y	FM64x	FM64y	FM64x	FM64y
65	FM65x	FM65y	FM65x	FM65y	FM65x	FM65y
66	FM66x	FM66y	FM66x	FM66y	FM66x	FM66y
67	FM67x	FM67y	FM67x	FM67y	FM67x	FM67y
68	FM68x	FM68y	FM68x	FM68y	FM68x	FM68y
69	FM69x	FM69y	FM69x	FM69y	FM69x	FM69y
70		FM70y		FM70y		FM70y
71		FM71y		FM71y		FM71y
72		FM72y		FM72y		FM72y
73		FM73y		FM73y		FM73y
74	FM74x	FM74yz	FM74x	FM74yz	FM74x	FM74yz
75	FM75x	FM75ya	FM75x	FM75ya	FM75x	FM75ya
76	FM76x	FM76y	FM76x	FM76y	FM76x	FM76y
77	FM77x		FM77x		FM77x	
78	FM78x		FM78x		FM78x	
79		FM79x		FM79x		FM79x
80	FM80x		FM80x		FM80x	
81	FM81xz FM81xa	FM81y	FM81xa	FM81y	FM81xa	FM81y