

# **Performance and Quality Monitoring Report**

## **January to March 2014**

# Table of Contents

<b>Executive Summary</b>	ii
<b>Summary of Quality</b>	
<b>1 Relevance</b>	<b>1</b>
<b>2 Accuracy</b>	<b>3</b>
<b>3 Achieved Sample</b>	<b>4</b>
<b>4 Response Rates</b>	<b>5</b>
<b>5 Timeliness and punctuality</b>	<b>11</b>
<b>6 Accessibility and clarity</b>	<b>12</b>
<b>7 Comparability</b>	<b>13</b>
<b>8 Coherence</b>	<b>15</b>
<b>Summary of Methods</b>	<b>16</b>
<b>Technical Definitions</b>	<b>17</b>
<b>Website References</b>	<b>19</b>
<b>List of Tables/Figures</b>	
3.1 Achieved sample by type of household, GB & UK, JM14	4
3.2 Achieved number of household interviews, GB and UK, D99F to JM14	4
3.3 Achieved number of person interviews, GB and UK, D99F to JM14	4
4.1 Wave specific response rates, GB, JM14, excluding imputed households	5
4.2 Wave specific response rates, GB, excluding imputed households, D99F to JM14	5
4.3 Wave specific response rates, GB, JM14, including imputed households	6
4.4 Composition of non-response, GB, JM14, including imputed households	6
4.5 Wave specific response rates, UK, JM14, excluding imputed households	7
4.6 Wave specific response rates, UK, JM14, including imputed households	7
4.7 Wave specific response rates, JM14, including imputed, by Region	8
4.8 Proxy response, GB, JM14	9
4.9 Income response rates by NS-SEC, GB, JM14	9
4.10 Summary of attrition by key characteristics, GB, JM14	10

Note: In previous versions of this document a table detailing sampling variability (previously Table 2.4) was included. Sampling variability (95% confidence intervals) can be found in the Sampling Variability' section (Table A11) of the [Labour Market Statistics Bulletin](#)

# Executive Summary

## January to March 2014

**Note:** Due to the move from processing the LFS on a seasonal quarter basis to processing on a calendar quarter basis from January 2006, all time series data have a break in series which corresponds to this change.

### Summary of achieved sample size

- The achieved sample size for the UK LFS during January to March (JM14) was 99,315 individuals (including 0 individuals in NHS households) in 41,800 households (including 0 NHS households).
- Compared to the previous quarter (OD13) this represents a decrease of 0.11% in household interviews, and an increase of 0.45% in achieved person interviews.

### Summary of response rates

[Please note that historical reports can be accessed on the ONS web site.](#)

In JM14 key response rates were as follows:

- The total response rate for GB excluding imputed cases (Table 4.1, page 5) was 49%. This is up 0.2 percentage points on the previous quarter.
- The response rate excluding imputed cases (Fig 4.2, page 5) was 59.1% in wave 1 and 43.2% in wave 5. This compares with 59.4% and 43.9% respectively in the previous quarter.
- The total response rate for GB including imputed cases (Table 4.3, page 6) was 55.4%, flat percentage points on the previous quarter.
- Of non-response in JM14 (Fig 4.4, page 6), Non-Contacts comprised 17.2% (down 1.2 percentage points on the previous quarter). Circumstantial Refusals were 11.7%, (down 0.6 percentage points) Outright Refusals comprised 51.1% (up 1.1 percentage points on the previous quarter) and other refusals comprised the remainder.
- The region with the highest accumulated response rate across the five waves (Table 4.7, page 8) was 'West Yorkshire' (61.7%). The lowest were 'Outer London' (50%) West Midlands Met Council (50%) and Inner London (50.1%)
- The overall proxy response rate (Table 4.8, page 9) is 34.2%. The highest proxy response rates occur in the 16-17 age group (87.5%), in males (39.6%) and in the non-white ethnicity group (43.4%).
- The average income response rate (Table 4.9, page 9) was 84.8%.
- The data on attrition rates reveal that those who drop out of the survey between waves 1 and 5, tend to be distributed fairly evenly by key characteristics, but are over-represented in the 20 - 29 age bands, in households with 6 or more people, those who were on a Government training scheme and amongst those living in Inner London. (Table 4.10, page 10).

**Note:** Methodological changes in JM11 and JS10 have impacted response rates. From JM11 a proportion of initial interviews have been conducted by the telephone unit rather than face to face as an efficiency measure. Telephone interviews generally have higher levels of non-response. The removal of households with residents aged 75 and older after their initial interview from JS10 also impacts response as these households generally have high response rates. See the 'Questionnaire Changes' section below for more details.

## Executive Summary (Continued)

### Questionnaire Changes

As of April 2010 the state pension age for women changed in a stepwise fashion, going up by one month every two months, until 65 is reached in April 2020. The LFS has changed its definition of 'pension age' from April 2010 to be all those aged 65 and over irrespective of gender.

From JS10, households that only contain respondents aged 75 and older are removed from the sample after their wave one interview. This change was introduced to reduce the cost of the survey and reduce the burden on respondents. Households only containing individuals aged 75 or older are largely economically inactive and therefore the value of interviewing these households is greatly reduced when considering the main aims of the LFS. The wave one interviews from 75 plus households will receive a larger weight to make them representative of the UK population. This change results in around a 10% reduction in the household sample size and a 7% reduction in the individual sample size.

From JS10, the treatment of 'concealed multi-households' on the LFS has also changed. Previously if one sampled address turned out on inspection to be, for example, not one house but six flats, all six flats would be recorded as households and interviews would be attempted with each household. The number of households encountered could be in the hundreds. This was not a practical approach. ONS decided to harmonise the approach to multi-households across all ONS social surveys. From JS10 if a concealed multi-household is recorded only one household will be randomly selected to be interviewed.

Following a pilot run in JS10, from JM11 onwards a proportion of wave 1 cases (around 15-20%) have been interviewed by the Telephone Unit (TU) as opposed to the traditional face-to-face method (FtF). Sampled addresses are matched to telephone numbers in order to do this. Potential concerns associated with this approach are twofold; that response rates will fall as sampled respondents may be more likely to refuse a telephone survey, and that mode effects may be observed in the data collected. This situation will be monitored.

Details of Fieldwork Issues and New, Amended and Deleted questions can be found in Section 7 (page 14).

# SUMMARY OF QUALITY

## 1 RELEVANCE

*The degree to which the statistical product meets user needs for both coverage and content*

### **Primary Purpose**

The primary purpose of the LFS is "the prompt publication of key aggregate, whole economy, indicators, for the integrated assessment of labour market conditions" (Review of the Labour Force Survey, ONS, 2002). The 'labour market' covers all aspects of people's work, including the education and training needed to equip them for work, the jobs themselves, job-search for those out of work, and income from work and benefits.

### **Users and Uses**

Users of LFS data often combine it with related data from other sources to provide an overall view of the state of the labour market. One of the most important users of this sort of assessment is the Bank of England's Monetary Policy Committee, which sets interest rates in order to meet the Government's inflation target.

Other key users of LFS data are HM Treasury and the Department for Work and Pensions, because they are responsible for UK economic and labour market policy. They are interested in a variety of indicators of the state of the labour market, including the number of people in employment, the number of hours worked, and the number of unemployed people (defined according to the International Labour Organisation - ILO). They often analyse these series by age groups, by regions and by gender. Other Government users include the Department for Business, Innovation and Skills (BIS), the Home Office, the Health & Safety Executive, the Scottish Government, and the Welsh Government.

At the international level, LFS data are used by the European Parliament, Council and Commission, the European Central Bank and DG Employment (Directorate-General for Employment, Social Affairs and Equal Opportunities). It is also used by the Organisation for Economic Co-operation and Development (OECD) and the International Labour Organisation (ILO).

Other users include local authorities, the Trades Union Congress (TUC), the Employer's Association, the Confederation of British Industry, the Institute of Employment Studies, the Institute for Public Policy Research, the National Institute of Economic and Social Research, the Policy Studies Institute, the Institute for Fiscal Studies, academic researchers, the media and the general public.

### **Strengths and Limitations**

The strengths of the LFS are that it has the largest coverage of any household survey in the UK and can thus generate statistics for small geographical areas. In addition, the sampling errors are relatively small, as a result of the wave structure and the size of the survey. The survey covers a large range of employment-related variables and non-employment-related variables, allowing cross-linking analyses to be undertaken (e.g. earnings against educational attainment).

One of the limitations of the LFS is that the sample design provides no guarantee of adequate coverage of any industry, as the survey is not industrially stratified. The LFS coverage also omits communal establishments, except NHS housing, students in halls of residence and at boarding schools. Members of the armed forces are only included if they live in private accommodation. Also, workers under 16 are not covered.

## RELEVANCE

### **Key Definitions**

The definitions of the three economic activity groups - employed, unemployed and economically inactive - which are used in the LFS are the standard International Labour Organisation (ILO) definitions. It should be noted that although the LFS uses ILO definitions, these definitions are not interpreted and applied in exactly the same way in different countries. For example, although 'working age' is a common term, different countries have different statutory school leaving and retirement ages. However, Eurostat collects data from Member States and adjusts them to produce comparable estimates.

## 2 ACCURACY

*The closeness between an estimated result and the (unknown) true value*

The main threats to accuracy are sources of error, namely sampling error and non-sampling error, where non-sampling error includes: coverage error, non-response error, measurement error, processing error and model assumption error.

Many of the sources of non-sampling error are difficult to measure. However, the LFS publishes detailed response rates for all waves of the survey and an overall response rate, including time-series (Tables 4.1 - 4.6). Response rates are also published by Government Office Region (GOR) for each wave during the particular quarter (Table 4.7). The LFS also publishes proxy response rates (Table 4.8), response rates for income questions by National Statistics (NS) socio-economic classification (Table 4.9) and attrition rates (Table 4.10).

Surveys, such as the LFS, provide estimates of population characteristics rather than exact measures. In principle, many random samples could be drawn and each would give different results, due to the fact that each sample would be made up of different people, who would give different answers to the questions asked. The spread of these results is the sampling variability, which generally reduces with increasing sample size. A confidence interval is a range of values, defined by a lower and upper bound, which indicates the variability of an estimate. Statistical methods are used to calculate the sampling variability from which the confidence interval can be determined. For example, with a 95 per cent confidence interval, it is expected that in 95 per cent of the survey samples, the resulting confidence interval will contain the true value that would be obtained by surveying the whole population.

The LFS routinely publishes details of achieved sample sizes in terms of achieved number of household and person interviews (Tables 3.1, 3.2 & 3.3) and sampling variability for estimates of key variables. Sampling variability (95% confidence intervals) can be found in the 'Sampling Variability' section (Table A11) of the [Labour Market Statistics Bulletin](#)

### 3 ACHIEVED SAMPLE

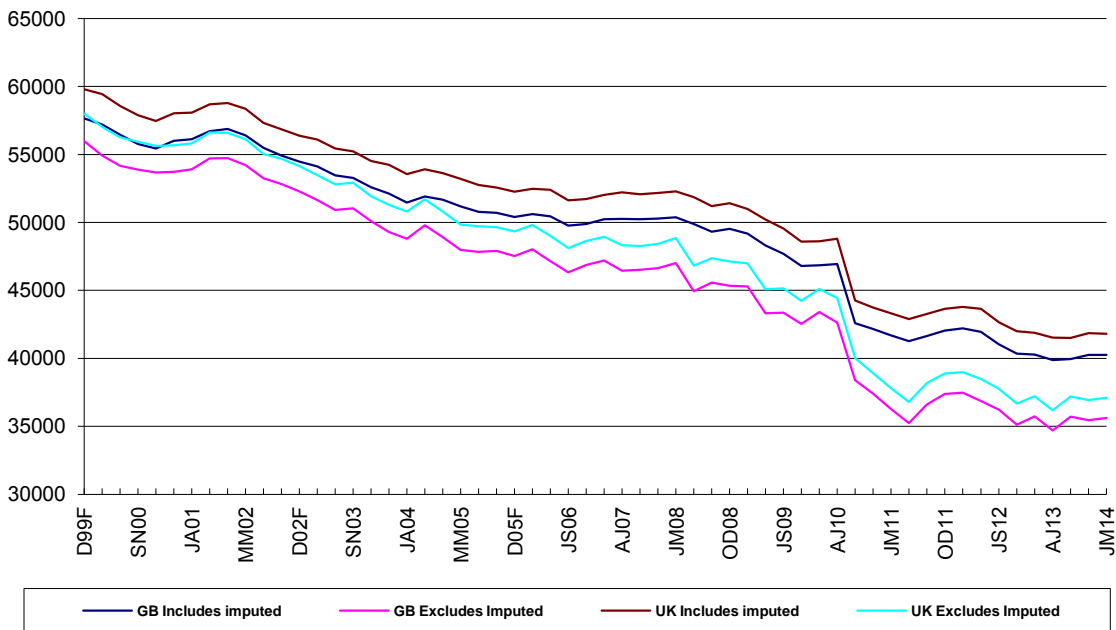
#### 3.1 LFS QUARTERLY SURVEY

Achieved sample by type of household, JM14

	GB		UK	
	Includes imputed	Excludes imputed	Includes imputed	Excludes imputed
Private households	40,254	35,624	41,800	37,090
Individuals in private households	95,411	82,706	99,315	86,398
NHS Households	0	0	0	0
Individuals in NHS households	0	0	0	0
<i>Total households</i>	<i>40,254</i>	<i>35,624</i>	<i>41,800</i>	<i>37,090</i>
<i>Total individuals</i>	<i>95,411</i>	<i>82,706</i>	<i>99,315</i>	<i>86,398</i>

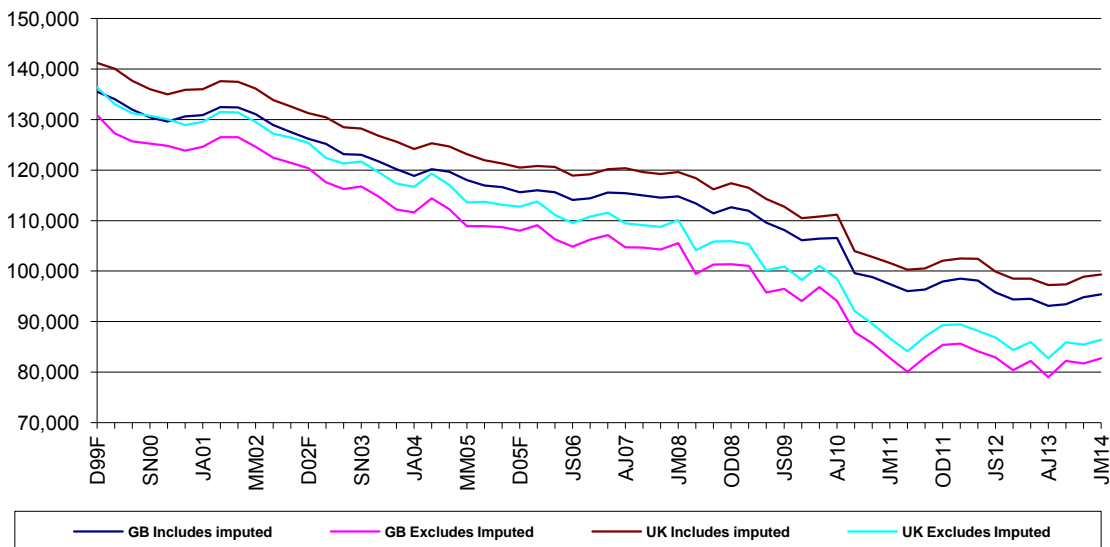
#### 3.2 LFS QUARTERLY SURVEY

Achieved number of household interviews, GB and UK, D99F to JM14



#### 3.3 LFS QUARTERLY SURVEY

Achieved number of person interviews, GB and UK, D99F to JM14





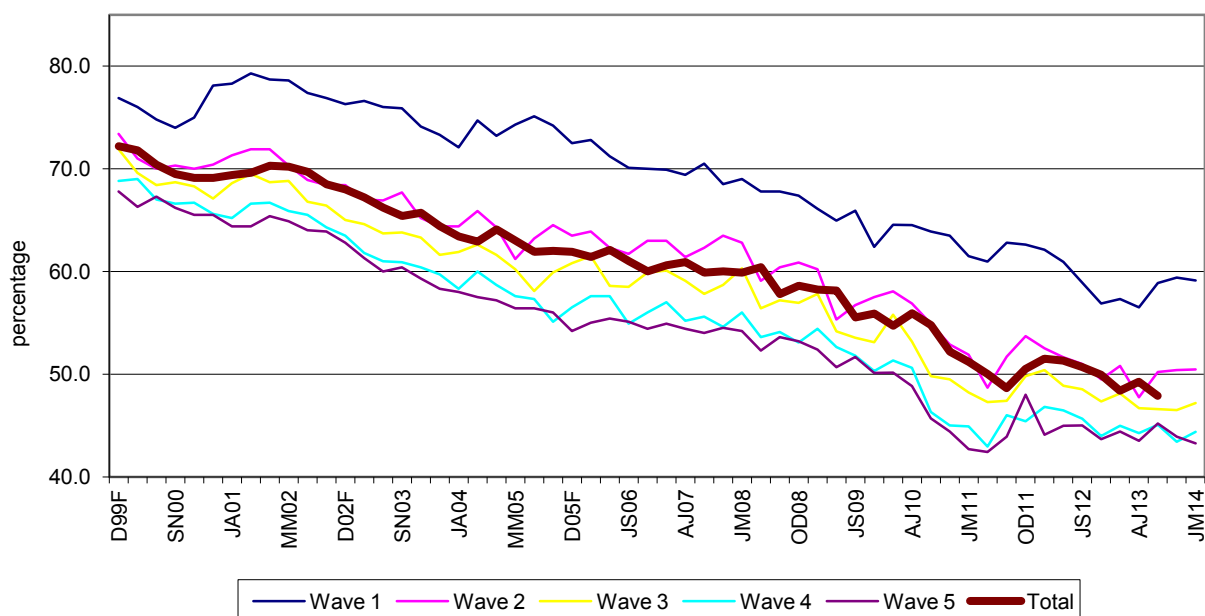
## 4 RESPONSE RATES

### 4.1 LFS QUARTERLY SURVEY Wave specific response rates, GB, excluding imputed households JM14

	Wave 1 in JM14		Wave 2 in JM14		Wave 3 in JM14		Wave 4 in JM14		Wave 5 in JM14		Total	
	#	%	#	%	#	%	#	%	#	%	#	%
<b>Eligible households found at selected units</b>	15,372	100.0	14,350	100.0	14,247	100.0	14,270	100.0	14,432	100.0	72,671	100.0
<b>Responding units</b>												
Total	9,086	59.1	7,240	50.5	6,724	47.2	6,335	44.4	6,241	43.2	35,626	49.0
Full	8,547	55.6	6,542	45.6	6,040	42.4	5,678	39.8	5,492	38.1	32,299	44.4
Partial	539	3.5	698	4.9	684	4.8	657	4.6	749	5.2	3,327	4.6
<b>Non-responding units</b>												
Circumstantial refusal	1,607	10.5	1,360	9.5	1,279	9.0	1,138	8.0	866	6.0	6,250	8.6
Outright refusal	2,289	14.9	3,002	20.9	3,398	23.9	3,752	26.3	4,126	28.6	16,567	22.8
Refusal to HQ	592	3.9	615	4.3	672	4.7	607	4.3	660	4.6	3,146	4.3
Non-contact	1,798	11.7	1,580	11.0	1,389	9.7	1,501	10.5	1,507	10.4	7,775	10.7
<b>Addresses not issued for interviewing</b>												
Refusal to re-interview	n/a	n/a	553	3.9	785	5.5	937	6.6	1,032	7.2	3,307	4.6
Co-operation rate		66.9		59.3		55.7		53.5		52.5		57.8
Contact rate		84.5		84.1		84.7		84.2		83.8		84.3

Note: Excludes households for which response has been imputed. The total response rate is the aggregate response rate for the quarter across all waves, based on all eligible, in-scope households. For a full definition of response categories and the method used to calculate the response rates, see Technical Definitions pg17.

### 4.2 LFS QUARTERLY SURVEY Wave specific response rates, GB, excluding imputed households, D99F to JM14



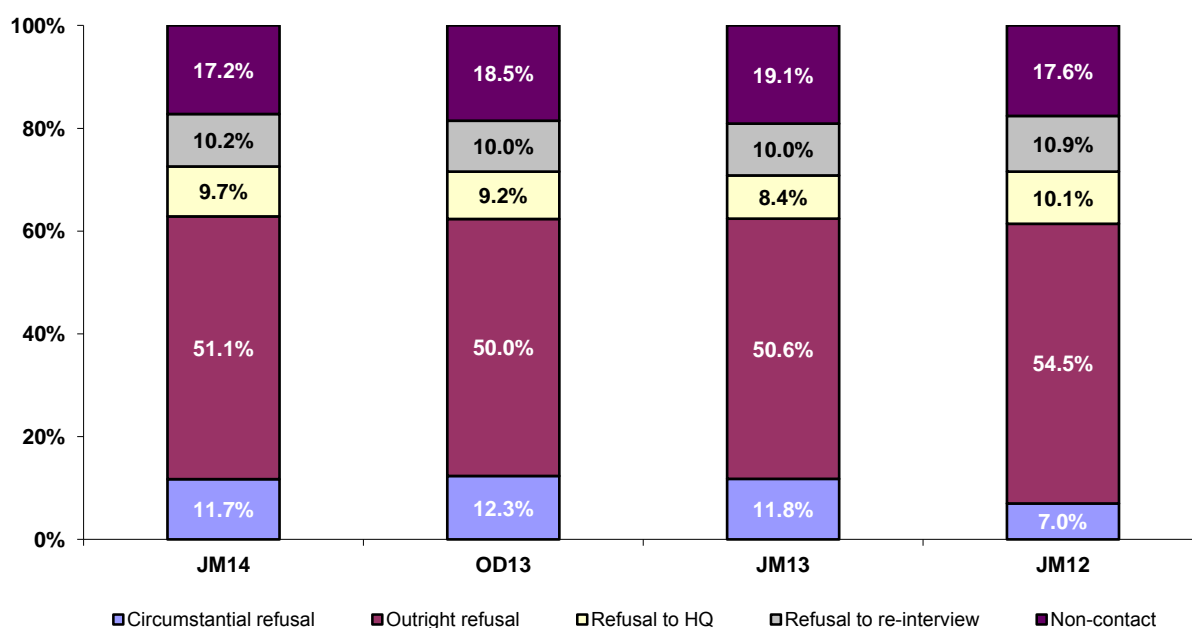
## 4 RESPONSE RATES

### 4.3 LFS QUARTERLY SURVEY Wave specific response rates, GB, JM14, including imputed households

	Wave 1 in JM14		Wave 2 in JM14		Wave 3 in JM14		Wave 4 in JM14		Wave 5 in JM14		Total	
	#	%	#	%	#	%	#	%	#	%	#	%
<b>Eligible households found at selected units</b>	15,372	100.0	14,350	100.0	14,247	100.0	14,270	100.0	14,432	100.0	72,671	100.0
<b>Responding units</b>												
Total	9,086	59.1	8,722	60.8	7,979	56.0	7,412	51.9	7,058	48.9	40,257	55.4
Full	8,547	55.6	6,542	45.6	6,040	42.4	5,678	39.8	5,492	38.1	32,299	44.4
Partial	539	3.5	698	4.9	684	4.8	657	4.6	749	5.2	3,327	4.6
Imputed	-	-	1,482	10.3	1,255	8.8	1,077	7.5	817	5.7	4,631	6.4
<b>Non-responding units</b>												
Circumstantial refusal	1,607	10.5	586	4.1	606	4.3	558	3.9	446	3.1	3,803	5.2
Outright refusal	2,289	14.9	3,002	20.9	3,398	23.9	3,752	26.3	4,126	28.6	16,567	22.8
Refusal to HQ	592	3.9	615	4.3	672	4.7	607	4.3	660	4.6	3,146	4.3
Non-contact	1,798	11.7	872	6.1	807	5.7	1,004	7.0	1,110	7.7	5,591	7.7
<b>Addresses not issued for interviewing</b>												
Refusal to re-interview	n/a	n/a	553	3.9	785	5.5	937	6.6	1,032	7.2	3,307	4.6
Co-operation rate		66.9		67.5		63.1		60.1		57.4		63.1
Contact rate		84.5		89.2		89.0		87.9		86.8		87.4

The total response rate is the cumulative response rate for the quarter across all waves, based on all eligible, in-scope households. For a full definition of response categories and the method used to calculate the response rates, see Technical Definitions pg 17.

### 4.4 LFS QUARTERLY SURVEY Composition of non-response, Great Britain, including imputed households



Note: For definitions of the types of non-response, see Technical Definitions. Figures are based on the aggregate response for the quarter covering all waves.

## 4 RESPONSE RATES

### 4.5 LFS QUARTERLY SURVEY Wave specific response rates, UK, JM14, excluding imputed households

	Wave 1 in JM14		Wave 2 in JM14		Wave 3 in JM14		Wave 4 in JM14		Wave 5 in JM14		Total	
	#	%	#	%	#	%	#	%	#	%	#	%
<b>Eligible households found at selected units</b>	15,921	100.0	14,899	100.0	14,787	100.0	14,846	100.0	15,009	100.0	75,462	100.0
<b>Responding units</b>												
Total	9,425	59.2	7,536	50.6	6,987	47.3	6,616	44.6	6,528	43.5	37,092	49.2
Full	8,877	55.8	6,829	45.8	6,299	42.6	5,953	40.1	5,771	38.5	33,729	44.7
Partial	548	3.4	707	4.7	688	4.7	663	4.5	757	5.0	3,363	4.5
<b>Non-responding units</b>												
Circumstantial refusal	1,645	10.3	1,376	9.2	1,295	8.8	1,151	7.8	874	5.8	6,341	8.4
Outright refusal	2,390	15.0	3,037	20.4	3,420	23.1	3,768	25.4	4,131	27.5	16,746	22.2
Refusal to HQ	610	3.8	622	4.2	674	4.6	607	4.1	660	4.4	3,173	4.2
Non-contact	1,851	11.6	1,650	11.1	1,448	9.8	1,550	10.4	1,548	10.3	8,047	10.7
<b>Addresses not issued for interviewing</b>												
Refusal to re-interview			678	4.6	963	6.5	1,154	7.8	1,268	8.4	4,063	5.4
Co-operation rate		67.0		59.9		56.5		54.5		53.5		58.5
Contact rate		84.5		84.0		84.6		84.2		83.9		84.3

Note: Excludes households for which response has been imputed. The total response rate is the aggregate response rate for the quarter, based on all eligible, in-scope households. See Technical Definitions (pg 17) for a full definition of response categories and the method used to calculate the response rates.

### 4.6 LFS QUARTERLY SURVEY Wave specific response rates, UK, JM14, including imputed households

	Wave 1 in JM14		Wave 2 in JM14		Wave 3 in JM14		Wave 4 in JM14		Wave 5 in JM14		Total	
	#	%	#	%	#	%	#	%	#	%	#	%
<b>Eligible households found at selected units</b>	15,921	100.0	14,899	100.0	14,787	100.0	14,846	100.0	15,009	100.0	75,462	100.0
<b>Responding units</b>												
Total	9,425	59.2	9,044	60.7	8,267	55.9	7,708	51.9	7,360	49.0	41,804	55.4
Full	8,877	55.8	6,829	45.8	6,299	42.6	5,953	40.1	5,771	38.5	33,729	44.7
Partial	548	3.4	707	4.7	688	4.7	663	4.5	757	5.0	3,363	4.5
Imputed	-	-	1,508	10.1	1,280	8.7	1,092	7.4	832	5.5	4,712	6.2
<b>Non-responding units</b>												
Circumstantial refusal	1,645	10.3	599	4.0	617	4.2	567	3.8	452	3.0	3,880	5.1
Outright refusal	2,390	15.0	3,037	20.4	3,420	23.1	3,768	25.4	4,131	27.5	16,746	22.2
Refusal to HQ	610	3.8	622	4.2	674	4.6	607	4.1	660	4.4	3,173	4.2
Non-contact	1,851	11.6	919	6.2	846	5.7	1,042	7.0	1,138	7.6	5,796	7.7
<b>Addresses not issued for interviewing</b>												
Refusal to re-interview			678	4.6	963	6.5	1,154	7.8	1,268	8.4	4,063	5.4
Co-operation rate		67.0		68.0		63.7		60.9		58.4		63.7
Contact rate		84.5		89.2		89.0		88.0		86.9		87.4

Note: The total response rate is the aggregate response rate for the quarter, based on all eligible, in-scope households. For a full definition of response categories and the method used to calculate the response rates, see Technical Definitions (pg 17).

## 4 RESPONSE RATES

### 4.7 LFS QUARTERLY SURVEY Wave specific response rates, JM14, including imputed households, by Region

Region	Wave 1 in JM14	Wave 2 in JM14	Wave 3 in JM14	Wave 4 in JM14	Wave 5 in JM14	Total
Tyne & Wear	69.6	64.8	61.2	54.5	53.3	60.8
Rest of North East	57.6	64.9	53.7	55.7	49.3	56.2
Greater Manchester	57.7	60.6	58.3	52.1	48.2	55.4
Merseyside	54.8	60.5	53.1	47.3	43.4	51.8
Rest of North West	62.9	63.5	58.4	47.8	44.2	55.5
South Yorkshire	63.7	63.6	58.6	57.2	47.4	58.1
West Yorkshire	61.3	67.1	58.2	60.7	61.2	61.7
Rest of Yorkshire and Humberside	60.2	67.4	59.8	56.3	55.8	59.9
East Midlands	62.0	63.5	59.9	53.2	51.1	58.0
West Midlands Metropolitan Council	57.6	54.4	48.2	45.8	44.1	50.0
Rest of West Midlands	60.9	60.9	58.1	50.2	52.1	56.5
East of England	59.4	60.8	58.5	55.5	49.2	56.7
Inner London	48.2	55.1	51.0	50.6	45.9	50.1
Outer London	54.2	55.5	48.3	46.2	45.5	50.0
South East	59.8	59.2	57.3	51.5	49.3	55.5
South West	57.9	60.9	57.0	53.1	49.6	55.7
<b>England</b>	<b>58.9</b>	<b>60.6</b>	<b>56.2</b>	<b>52.0</b>	<b>49.1</b>	<b>55.4</b>
<b>Wales</b>	<b>60.4</b>	<b>61.3</b>	<b>54.9</b>	<b>54.2</b>	<b>48.3</b>	<b>55.9</b>
Strathclyde	60.2	65.0	52.1	51.5	46.6	55.2
Rest of Scotland	61.1	60.4	56.6	49.2	47.9	55.2
<b>Scotland</b>	<b>60.7</b>	<b>62.3</b>	<b>54.8</b>	<b>50.2</b>	<b>47.3</b>	<b>55.2</b>
<b>Northern Ireland</b>	<b>61.7</b>	<b>58.7</b>	<b>53.3</b>	<b>51.4</b>	<b>52.3</b>	<b>55.4</b>

Note:

The total response rate is the aggregate response rate for the quarter, based on all eligible, in-scope households. Each wave reported here is an independent sample; for example, the wave 2 response in JM14 is based on response in that quarter plus the previous quarter (OD13) where it was issued as a wave 1 case.

## 4 RESPONSE RATES

### 4.8 LFS QUARTERLY SURVEY Proxy response, GB, JM14

		All responses	Proxy	%
<b>Age</b>	Total (16+)	74,848	25,585	34.2
	16-17	2,385	2,088	87.5
	18-19	2,143	1,609	75.1
	20+	70,320	21,888	31.1
<b>Sex</b>	Total	74,848	25,585	34.2
	Male	35,877	14,198	39.6
	Female	38,971	11,387	29.2
<b>Ethnicity</b>	Total	74,848	25,585	34.2
	White	66,833	22,105	33.1
	Non-white	7,965	3,455	43.4
	Refused	50	25	50.0
<b>Economic activity (INECAC05)</b>	Total	74,848	25,585	34.2
	Employees	38,356	13,458	35.1
	Self-Employed	6,952	2,381	34.2
	Government schemes	174	47	27.0
	Unpaid family workers	176	45	25.6
	ILO Unemployed	3,084	1,129	36.6
	Inactive	26,106	8,525	32.7

Note: For definition of 'unpaid family workers', see Section 7 (pg 13).

### 4.9 LFS QUARTERLY SURVEY Income Response Rates by NS-SEC, GB, JM14

	Wave 1 in JM14	Wave 5 in JM14	Total
<b>NS-SEC</b>	%	%	%
Higher managerial and professional	85.4	88.7	86.9
Lower managerial and professional	84.5	88.7	86.2
Intermediate occupations	83.1	88.2	85.2
Small employers and own account workers	85.7	91.7	87.9
Lower supervisory and technical	81.4	85.6	83.2
Semi-routine occupations	81.3	85.5	82.9
Routine occupations	79.9	83.1	81.2
<b>Total</b>	<b>83.1</b>	<b>87.2</b>	<b>84.8</b>

Note: The percentages in Table 4.9 are based on all eligible in-scope respondents at wave 1 and all eligible in-scope respondents at wave 5. The total response rate is the aggregate response rate for income for the quarter (wave 1 and wave 5), based on all eligible, in-scope respondents.

## 4 RESPONSE RATES

### 4.10 LFS QUARTERLY SURVEY Summary of attrition by key characteristics, GB, JM14

Column percentages

		Wave 1 in JM13	Wave 5 in JM14	Responds all waves	Non-responder
		Responds	Responds		
<b>Age</b>	<16	21.7	21.1	18.7	22.4
	16-19	4.6	4.3	3.7	4.9
	20-29	11.7	8.3	6.8	15.4
	30-39	13.4	12.3	11.0	14.5
	40-49	15.3	14.9	14.2	15.6
	50-59	13.2	14.0	14.5	12.3
	60-69	13.6	16.6	20.0	10.4
	70+	6.5	8.5	11.0	4.4
<b>Sex</b>	Male	48.9	48.8	49.0	49.1
	Female	51.1	51.2	51.0	50.9
<b>Econ Activity (INECAC05)</b>	Employees	40.1	39.1	36.9	41.3
	Self Emp	7.0	6.9	6.7	7.2
	GovTraining Scheme	0.2	0.1	0.1	0.2
	UPFW(Unpaid Family Workers)	0.1	0.1	0.2	0.1
	ILO Unemp	3.8	3.4	3.0	4.3
	Inactive	27.0	29.4	34.3	24.4
<b>Number of people in household (TOTNUM)</b>	1	9.3	10.2	11.9	8.3
	2	30.3	32.9	36.4	27.4
	3	21.7	20.0	18.4	23.6
	4	23.8	24.5	22.8	23.0
	5	9.2	8.4	7.4	10.1
	6 or more	5.8	4.0	3.1	7.7
<b>Region (GOVTOR)</b>	Tyne & Wear	2.0	2.0	1.9	1.9
	Rest of North East	2.3	2.4	2.0	2.2
	Greater Manchester	4.5	4.9	4.7	4.1
	Merseyside	2.2	2.3	2.4	2.1
	Rest of North West	4.6	3.8	3.7	5.4
	South Yorkshire	2.3	2.3	2.3	2.3
	West Yorkshire	4.1	4.5	4.0	3.8
	Rest of Yorkshire and Humberside	3.5	3.7	3.8	3.2
	East Midlands	8.4	8.4	8.6	8.4
	West Midlands Metropolitan Council	4.3	4.1	4.5	4.5
	Rest of West Midlands	4.8	5.3	5.2	4.3
	East of England	9.7	9.6	10.4	9.8
	Inner London	3.9	2.9	2.7	5.0
	Outer London	7.4	6.9	7.2	7.9
	South East	13.9	14.5	14.6	13.2
	South West	8.8	9.3	9.5	8.1
Wales	4.7	4.7	3.9	4.8	
Strathclyde	3.6	3.1	3.1	4.1	
Rest of Scotland	4.9	5.2	5.6	4.6	

Note: The column, Wave 1 in JM13 Responds, shows the percentage of responders in each key characteristics category at wave 1. The column, Wave 5 in JM14 Responds, shows the percentage of responders in each key characteristics category at wave 5. A significant decline in the values between waves 1 and 5 denotes a higher rate of attrition than where values are consistent between waves 1 and 5 or higher at wave 5.

## 5 TIMELINESS AND PUNCTUALITY

*Timeliness refers to the lapse of time between publication and the period to which the data refer. Punctuality refers to the time lag between the actual and planned dates of publication.*

### 3 Delivery dates of data

#### 3.1 To ONS Labour Market Division (LMD)

Scheduled delivery date for file: April 22, 2014

Achieved delivery date for file: April 22, 2014

Time lag between achieved delivery date and the end of the reference period: 22 days

#### 3.2 Data file for other users

Scheduled availability date for Regional Public & Government normal release user files: May 14, 2014

##### *Recipients*

Bank of England

Department for Business Innovation and Skills

Department for Communities and Local Government

Department for Education

Department for Enterprise, Trade and Investment (Northern Ireland)

Department for Media, Culture and Sport

Department for Transport

Department for Work and Pensions

Department of Finance and Personnel (Northern Ireland)

Economic and Social Research Council / Data Archive

Health and Safety Executive

HM Treasury

Home Office

Low Pay Commission

Office for Standards in Education

Office of Manpower Economics

Scottish Government / Scottish Executive

Small Business Service

Welsh Government

## 6 ACCESSIBILITY AND CLARITY

*Accessibility is the ease with which users are able to access the data, also reflecting the format(s) in which the data are available and the availability of supporting information. Clarity refers to the quality and sufficiency of the metadata, illustrations and accompanying advice.*

The UK Data Archive at Essex University provides free access to the various LFS datasets and can be contacted via the website: <http://www.data-archive.ac.uk>

A highly disaggregated dataset, which covers a wealth of data for local areas, is available free from NOMIS: <http://www.nomisweb.co.uk>

The Social Surveys Team provide LFS data for a fee, and can be contacted by phone (01633 455678) or email: [socialsurveys@ons.gsi.gov.uk](mailto:socialsurveys@ons.gsi.gov.uk)

Labour Market data, including data from the LFS, are published every month through Statistical Bulletins These include text, tables and charts. Data contained within the Bulletins are available to download, free of charge, from the ONS website. All the main series contained within the releases are available from:

<http://www.ons.gov.uk/ons/taxonomy/index.html?nscl=Labour+Market>

For questions relating to Labour Market statistics, please contact:  
[labour.market@ons.gsi.gov.uk](mailto:labour.market@ons.gsi.gov.uk)

For general queries about the LFS, please contact:  
[lhs@ons.gsi.gov.uk](mailto:lhs@ons.gsi.gov.uk)



## 7 COMPARABILITY

*The degree to which data can be compared over time and domain*

### **Background**

The LFS began in 1973 and was carried out every 2 years until 1983. Between 1984 and 1991, data were collected annually and the survey has been running in its present form, with quarterly sampling, since spring 1992. It is carried out under European Union Regulations which specify the way in which the survey should be conducted, the quality of the results that Member States supply to Eurostat and the timetable for supplying results. Although the LFS began as a survey designed to meet international obligations, its primary purpose is now (as stated in section 1, Relevance), "the prompt publication of key aggregate, whole economy, indicators, for the integrated assessment of labour market conditions" (Review of the Labour Force Survey, ONS, 2002).

### **Definitions**

The definitions of the three economic activity groups - employed, unemployed and economically inactive - which are used in the LFS are the standard International Labour Organisation (ILO) definitions.

**Economically active** - those aged 16 or over, who are either employed or unemployed in the survey reference week.

**Employed** - those aged 16 or over, who are regarded as in employment if they did at least one hour of work in the reference week (as an employee, self-employed, unpaid workers in a family business or participants in government-supported training schemes) and those who had a job that they were temporarily away from (for example, if they are on holiday).

**Unemployed** - those aged 16 or over, who are without work, want a job, have actively sought work in the last four weeks and are available to start work in the next two weeks; or are out of work but have found a job and are waiting to start it within the next two weeks.

**Economically inactive** - those who are neither in employment nor unemployed. This group includes, for example, all those who are looking after a home or family, have a long-term illness or disability which prevents them working or are retired.

**Unpaid family workers** - those who are doing unpaid work in a family business.

## 7 COMPARABILITY

### Questionnaire Changes

**New questions for JM14:** EuroStat Ad-Hoc Module questions for 2014 (CRYFTH, CRYFSPC, CRYFFRM, CRYMTH, CRYMSPC, CRYMFRM, FATHEDU, MOTHEDU, WKOTHCRY, CRYSEX, WCHCRY, WCHCRYFR, COMEUK, COMEUKMN, JOBINUK, OVRQUAL, OBSKILM, OBSKILS, OBJOBM, OBJOBS, LANGSKIL, LANGCOUR, FINDJOB). Veterans questions (VETSERV, VETCURR, VETYRLFT). Working past state pension age (WRKLNG, MAINRET).

**Amended questions for JM14:** all persons on Government Training schemes will now be routed to the variables ACCDNT/ILLWRK/TMEOFF/NOBACK9. Minor wording adjustments have been made to SCHM12, FUND12 and LLORD. Questions that have been removed from the JM questionnaire but will appear in other quarters: CONPRM, CONPRY, CONPRE, HTHDIS, HTHRET, HTHRES.

**Deleted questions for JM14:** EuroStat Ad-Hoc Module questions for 2013 (ANYACC, INJURY, INJNO, EROAD, JOB1, RESACT, STWRK1, OFFWRK, EHEALTH, WORSE, HEALNO, SERIOS, EAFFECT, LIMIT, JOB2, RESHLT, STWRK2, TIMOFF, FACTR, FACTRM, MENTL, MENTLM). Other: NRMS2, TSCHOTH and HM4WK have also been removed from the questionnaire. Variables that have been removed from the boost questionnaire (and will therefore not appear on APS datasets): FWKWEN, AXPB, AXFB.

### Fieldwork Issues

No field work issues for this period.

### Methodology

See page iii for full details of methodological changes; in JM11 a change was implemented to move some wave one interviews into the telephone unit, rather than being face to face interviews as would normally be the case.

## 8 COHERENCE

*The degree to which data that are derived from different sources or methods, but which refer to the same phenomenon, are similar*

### **Data Sources**

The LFS is one of a number of sources of data about the labour market. Some sources provide data which overlap with LFS data on employment, unemployment and earnings. ONS has published guidance about the strengths and limitations of each source in relation to these topics and has indicated which source is the most appropriate for different purposes. Details can be found in the Labour Market Guide, which can be accessed from the website:

<http://www.ons.gov.uk/ons/taxonomy/index.html?nscl=Labour+Market>

### **Employment, Unemployment and Economic Inactivity**

The LFS is the source recommended by ONS for certain employment-related statistics (e.g. estimates of the number of people in employment or unemployed). The LFS is also a unique source of comprehensive, coherent information about economic inactivity, where it provides information separately about people who want a job and those who do not.

### **Number and Industrial Composition of Jobs**

The workforce jobs (WFJ) series provides estimates of the number of jobs in the UK economy and is the source recommended by ONS for both the number of jobs and the industrial composition of jobs. Workforce jobs consist of the sum of employee jobs, self-employment jobs, jobs in the armed forces and government-supported trainees. Civilian workforce jobs are available by geographical region, gender and broad industry. Total workforce jobs are available by gender and broad industry.

### **Earnings**

For estimates of change in earnings (e.g. pay growth in the economy), a non-LFS source, the Average Weekly Earnings (AWE) (formerly the Average Earnings Index (AEI)) is the most suitable source. It provides industry and whole-economy information, but excludes small employers, the self-employed and government-supported trainees. Pay, commission, bonuses, overtime and pay award arrears are included, but redundancy payments and benefits in kind are excluded. The Annual Survey of Hours and Earnings (ASHE) includes information about the levels, distribution and make-up of earnings and hours worked for employees in different occupations, industries, ages and regions. It should be used when the information required is not available from the AWE (such as for occupational groups, or regional analyses), and is the preferred source of the earnings of full-time employees, and of the average hourly earnings of all employees. The LFS should be used when the information is not available from the AWE or from ASHE, and is the preferred source of data about the earnings of part-time and low-paid

## SUMMARY OF METHODS

The LFS covers private households, including persons who are temporarily absent. The resident population comprises persons who regard the sample address as their main address, and also those who have lived in the dwelling for more than six consecutive months, even if they do not regard this as their principal dwelling. Persons absent for more than six months are not regarded as members of the resident population. A private household comprises one or more persons whose main residence is the same dwelling and/or who share at least one meal per day. Students living in halls of residence and pupils at boarding school are sampled via the private households of their parents. In Great Britain, an additional sample is drawn from persons living in National Health Service accommodation.

The year is divided into quarters of 13 weeks. Prior to January 2006, these were seasonal quarters: winter (December to February), spring (March to May), summer (June to August) and autumn (September to November). From January 2006, the LFS has been conducted on the basis of calendar quarters: Q1 - January to March, Q2 - April to June, Q3 - July to September and Q4 - October to December.

For most of Great Britain, the survey base is the Royal Mail's PAF (Postcode Address File), a database of all addresses receiving mail. The list is limited to addresses receiving fewer than 25 items of post per day, so as to exclude businesses. Because of the very low population density in the far north of Scotland (north of the Caledonian Canal), telephone directories are used as sampling frames, and interviews are carried out by telephone because face-to-face interviews would be too expensive. In Northern Ireland POINTER, which is the government's central register of domestic properties, is used.

In Great Britain, a systematic sample is drawn each quarter from the three sampling bases, yielding 16,640 PAF addresses, 75 telephone numbers for the north of Scotland and 36 units of National Health Service housing. As the PAF is broken down geographically, the systematic sampling ensures that the sample is representative at regional level. In Northern Ireland, a simple random sample is drawn, each quarter, from each of three strata, giving 650 addresses in all.

A rotation system comprising five waves is used. Respondents are interviewed five times at 13-week intervals and one-fifth of the sample is replaced each quarter. Interviews are carried out on a face-to-face (CAPI) or telephone (CATI) basis with the help of portable computers for the interviews in the first wave. In the far north of Scotland (north of the Caledonian Canal) and for interviews in the second to fifth waves, wherever possible, interviews are carried out by telephone.

## TECHNICAL DEFINITIONS

### Imputation

If a household (or someone within a household) is unavailable for interview, but was interviewed in the previous wave, responses from the previous wave are rolled forward. This is referred to as 'imputation'. Imputation is carried out to minimise non-response bias in estimates, while simultaneously improving precision by boosting the sample size. The rationale is that most LFS variables do not change from one quarter to another for most people. Responses are rolled forward for one wave only. Data are not rolled forward after a second consecutive non-response. Tables and charts (at person or household level) containing responses which have been rolled forward from the previous wave are denoted by the term 'including imputed'. Tables and charts which do not contain responses which have been rolled forward from the previous wave are denoted by the term 'excluding imputed'.

### Method of Calculating Sampling Variability

The sampling variability is the spread of results which would be obtained if different samples were drawn. A confidence interval is a range of values, defined by a lower and upper bound, which indicates the variability of an estimate. Statistical methods are used to calculate the sampling variability from which the confidence interval can be determined. For example, with a 95 per cent confidence interval, it is expected that in 95 per cent of the survey samples, the resulting confidence interval will contain the true value that would be obtained by surveying the whole population.

### Method of Calculating Response Rates

The response rate indicates how many interviews were achieved as a proportion of those eligible for the survey. The formula used is as follows:

$$RR = (FR + PR)/(FR + PR + OR + CR + RHQ + NC + RRI^*)$$

where RR = response rate, FR = full response, PR = partial response, OR = outright refusal, CR = circumstantial refusal, RHQ = refusal to HQ, NC = non contact, RRI = refusal to re-interview, \*applies to waves 2 to 5 only.

### Definitions of Response Outcome Categories

A **full response** denotes a household in which each household member has answered all applicable questions.

A **partial response** denotes a household in which questions were not completed because someone refused to be interviewed, refused part way through the questionnaire or refused to let someone else answer on his or her behalf. However, at least one question block must have been completed. If only part information has been collected for a one-person household, it is coded as a refusal or non-contact.

An **outright refusal** is a household which refuses to respond to the survey and the interviewer feels that there is no chance of an interview at the current or in any future wave.

A **circumstantial refusal** is a household where the respondent refuses to respond because of a temporary circumstance (e.g. going on holiday, too busy during the field period). A circumstantial refusal enables an interviewer to call back at the next wave.

A **refusal to HQ** is a household which contacts headquarters to refuse to participate in the survey in response to the advance letter.

A **non-contact** arises when an address is occupied, but where it has not been possible to contact any member of the household in the field period.

A **refusal to re-interview** is a household which takes part in the survey (at one or more of waves one to four) but which, when asked to take part in the next wave (waves two to five), refuses.

## TECHNICAL DEFINITIONS

### **Method of Calculating Income Response Rates**

The income question is asked at wave 1 and wave 5 only. Individuals aged 16-69 who are in employment in the reference week, form the sub-set of respondents who are eligible for these questions. The percentage response rates for the income questions are based on all eligible, in-scope respondents at wave 1 and all eligible, in-scope respondents at wave 5. The total response rate is the aggregate response rate for income for the quarter (wave 1 and wave 5), based on all eligible, in-scope respondents.

### **NS-SEC**

NS-SEC is the National Statistics Socio-Economic Classification, which replaces previous classifications which were based on social class and social and economic group.

### **Proxy Response**

The LFS has to complete fieldwork to a tight timetable and interview as many of the sampled households as possible, which leaves limited time for recalls. LFS interviewers try to interview every adult (aged 16+) in each sampled household. However, when a household member is unavailable for interview, interviewers accept information by proxy from another responsible adult in the household. The proxy respondents are normally people living with a partner on behalf of their partner, and parents on behalf of their adult offspring who live with them.

### **Attrition**

Attrition is the term applied to respondents who begin the survey but subsequently drop out. It has been known for some time that these respondents tend to have different characteristics to those who remain in all waves of the survey, which can, therefore, result in attrition bias. For example, if respondents in a particular age band have a higher tendency to drop out (attrition rate) than respondents in other age bands, then they will be under-represented in subsequent waves of the survey and in estimates.

## WEBSITE REFERENCES

Labour Force Survey User Guides	<a href="http://www.ons.gov.uk/ons/guide-method/method-quality/specific/labour-market/labour-market-statistics/index.html">http://www.ons.gov.uk/ons/guide-method/method-quality/specific/labour-market/labour-market-statistics/index.html</a>
Labour Market Statistics Statistical Bulletin	<a href="http://www.ons.gov.uk/ons/taxonomy/index.html?nscl=Labour+Market#tab-sum-pub">http://www.ons.gov.uk/ons/taxonomy/index.html?nscl=Labour+Market#tab-sum-pub</a>
Labour Force Survey Summary Quality Report	<a href="http://www.ons.gov.uk/ons/guide-method/method-quality/quality/quality-information/social-statistics/quality-and-methodology-information-for-the-labour-force-survey--lfs-.pdf">http://www.ons.gov.uk/ons/guide-method/method-quality/quality/quality-information/social-statistics/quality-and-methodology-information-for-the-labour-force-survey--lfs-.pdf</a>
Methodology for the Calculation of Sampling Variability in the Labour Force Survey	<a href="http://www.ons.gov.uk/ons/guide-method/method-quality/specific/labour-market/articles-and-reports/the-calculation-of-sampling-variability-for-the-labour-force-survey.pdf">http://www.ons.gov.uk/ons/guide-method/method-quality/specific/labour-market/articles-and-reports/the-calculation-of-sampling-variability-for-the-labour-force-survey.pdf</a>
NOMIS	<a href="http://www.nomisweb.co.uk">www.nomisweb.co.uk</a>
Summary Quality Report for Labour Market Data Releases	<a href="http://www.ons.gov.uk/ons/guide-method/method-quality/quality/quality-information/business-statistics/new-component.pdf">http://www.ons.gov.uk/ons/guide-method/method-quality/quality/quality-information/business-statistics/new-component.pdf</a>
UK Data Archive, University of Essex	<a href="http://www.data-archive.ac.uk">http://www.data-archive.ac.uk</a>

# Performance and Quality Monitoring Report

April to June 2014

Labour  
Force  
Survey



# Table of Contents

<b>Executive Summary</b>	ii
<b>Summary of Quality</b>	
<b>1 Relevance</b>	<b>1</b>
<b>2 Accuracy</b>	<b>3</b>
<b>3 Achieved Sample</b>	<b>4</b>
<b>4 Response Rates</b>	<b>5</b>
<b>5 Timeliness and punctuality</b>	<b>11</b>
<b>6 Accessibility and clarity</b>	<b>12</b>
<b>7 Comparability</b>	<b>13</b>
<b>8 Coherence</b>	<b>15</b>
<b>Summary of Methods</b>	<b>16</b>
<b>Technical Definitions</b>	<b>17</b>
<b>Website References</b>	<b>19</b>
<b>List of Tables/Figures</b>	
3.1 Achieved sample by type of household, GB & UK, AJ14	4
3.2 Achieved number of household interviews, GB and UK, MM00 to AJ14	4
3.3 Achieved number of person interviews, GB and UK, MM00 to AJ14	4
4.1 Wave specific response rates, GB, AJ14, excluding imputed households	5
4.2 Wave specific response rates, GB, excluding imputed households, MM00 to AJ14	5
4.3 Wave specific response rates, GB, AJ14, including imputed households	6
4.4 Composition of non-response, GB, AJ14, including imputed households	6
4.5 Wave specific response rates, UK, AJ14, excluding imputed households	7
4.6 Wave specific response rates, UK, AJ14, including imputed households	7
4.7 Wave specific response rates, AJ14, including imputed, by Region	8
4.8 Proxy response, GB, AJ14	9
4.9 Income response rates by NS-SEC, GB, AJ14	9
4.10 Summary of attrition by key characteristics, GB, AJ14	10

Note: In previous versions of this document a table detailing sampling variability (previously Table 2.4) was included. Sampling variability (95% confidence intervals) can be found in the 'Sampling Variability' section (Table A11) of the [Labour Market Statistics Bulletin](#)

# Executive Summary

## April to June 2014

**Note:** Due to the move from processing the LFS on a seasonal quarter basis to processing on a calendar quarter basis from January 2006, all time series data have a break in series which corresponds to this change.

### Summary of achieved sample size

- The achieved sample size for the UK LFS during April to June (AJ14) was 98,668 individuals in 41,633 households . Please note: that there were no NHS households in this period.
- Compared to the previous quarter (JM14) this represents a decrease of 0.4% in household interviews, and a decrease of 0.65% in achieved person interviews.

### Summary of response rates

[Please note that historical reports can be accessed on the ONS web site.](#)

In AJ14 key response rates were as follows:

- The total response rate for GB excluding imputed cases (Table 4.1, page 5) was 47.9%. This is down 1.1 percentage points on the previous quarter.
- The response rate excluding imputed cases (Fig 4.2, page 5) was 59.3% in wave 1 and 42.9% in wave 5. This compares with 59.1% and 43.2% respectively in the previous quarter.
- The total response rate for GB including imputed cases (Table 4.3, page 6) was 55.1%, down 0.3 percentage points on the previous quarter.
- Of non-response in AJ14 (Fig 4.4, page 6), Non-Contacts comprised 15.9% (down 1.4 percentage points on the previous quarter). Circumstantial Refusals were 12.6%, (up 0.9 percentage points) Outright Refusals comprised 51.5% (up 0.4 percentage points on the previous quarter) and other refusals comprised the remainder.
- The region with the highest accumulated response rate across the five waves (Table 4.7, page 8) was 'West Yorkshire' (61%). The lowest were 'Outer London' (50.4%) and 'Inner London' (50.8%)
- The overall proxy response rate (Table 4.8, page 9) is 34.2%. The highest proxy response rates occur in the 16-17 age group (88.2%), in males (39.6%) and in the non-white ethnicity group (43.7%).
- The average income response rate (Table 4.9, page 9) was 85.5%.
- The data on attrition rates reveal that those who drop out of the survey between waves 1 and 5, tend to be distributed fairly evenly by key characteristics, but are over-represented in the 20 - 29 age bands, in households with 6 or more people, those who were ILO Unemployed and amongst those living in Inner or outer London. (Table 4.10, page 10).

**Note:** Methodological changes in JM11 and JS10 have impacted response rates. From JM11 a proportion of initial interviews have been conducted by the telephone unit rather than face to face as an efficiency measure. Telephone interviews generally have higher levels of non-response. The removal of households with residents aged 75 and older after their initial interview from JS10 also impacts response as these households generally have high response rates. See the 'Questionnaire Changes' section below for more details.

## Executive Summary (Continued)

### Questionnaire Changes

As of April 2010 the state pension age for women changed in a stepwise fashion, going up by one month every two months, until 65 is reached in April 2020. The LFS has changed its definition of 'pension age' from April 2010 to be all those aged 65 and over irrespective of gender.

From JS10, households that only contain respondents aged 75 and older are removed from the sample after their wave one interview. This change was introduced to reduce the cost of the survey and reduce the burden on respondents. Households only containing individuals aged 75 or older are largely economically inactive and therefore the value of interviewing these households is greatly reduced when considering the main aims of the LFS. The wave one interviews from 75 plus households will receive a larger weight to make them representative of the UK population. This change results in around a 10% reduction in the household sample size and a 7% reduction in the individual sample size.

From JS10, the treatment of 'concealed multi-households' on the LFS has also changed. Previously if one sampled address turned out on inspection to be, for example, not one house but six flats, all six flats would be recorded as households and interviews would be attempted with each household. The number of households encountered could be in the hundreds. This was not a practical approach. ONS decided to harmonise the approach to multi-households across all ONS social surveys. From JS10 if a concealed multi-household is recorded only one household will be randomly selected to be interviewed.

Following a pilot run in JS10, from JM11 onwards a proportion of wave 1 cases (around 15-20%) have been interviewed by the Telephone Unit (TU) as opposed to the traditional face-to-face method (FtF). Sampled addresses are matched to telephone numbers in order to do this. Potential concerns associated with this approach are twofold; that response rates will fall as sampled respondents may be more likely to refuse a telephone survey, and that mode effects may be observed in the data collected. This situation will be monitored.

Details of Fieldwork Issues and New, Amended and Deleted questions can be found in Section 7 (page 14).

# SUMMARY OF QUALITY

## 1 RELEVANCE

*The degree to which the statistical product meets user needs for both coverage and content*

### **Primary Purpose**

The primary purpose of the LFS is "the prompt publication of key aggregate, whole economy, indicators, for the integrated assessment of labour market conditions" (Review of the Labour Force Survey, ONS, 2002). The 'labour market' covers all aspects of people's work, including the education and training needed to equip them for work, the jobs themselves, job-search for those out of work, and income from work and benefits.

### **Users and Uses**

Users of LFS data often combine it with related data from other sources to provide an overall view of the state of the labour market. One of the most important users of this sort of assessment is the Bank of England's Monetary Policy Committee, which sets interest rates in order to meet the Government's inflation target.

Other key users of LFS data are HM Treasury and the Department for Work and Pensions, because they are responsible for UK economic and labour market policy. They are interested in a variety of indicators of the state of the labour market, including the number of people in employment, the number of hours worked, and the number of unemployed people (defined according to the International Labour Organisation - ILO). They often analyse these series by age groups, by regions and by gender. Other Government users include the Department for Business, Innovation and Skills (BIS), the Home Office, the Health & Safety Executive, the Scottish Government, and the Welsh Government.

At the international level, LFS data are used by the European Parliament, Council and Commission, the European Central Bank and DG Employment (Directorate-General for Employment, Social Affairs and Equal Opportunities). It is also used by the Organisation for Economic Co-operation and Development (OECD) and the International Labour Organisation (ILO).

Other users include local authorities, the Trades Union Congress (TUC), the Employer's Association, the Confederation of British Industry, the Institute of Employment Studies, the Institute for Public Policy Research, the National Institute of Economic and Social Research, the Policy Studies Institute, the Institute for Fiscal Studies, academic researchers, the media and the general public.

### **Strengths and Limitations**

The strengths of the LFS are that it has the largest coverage of any household survey in the UK and can thus generate statistics for small geographical areas. In addition, the sampling errors are relatively small, as a result of the wave structure and the size of the survey. The survey covers a large range of employment-related variables and non-employment-related variables, allowing cross-linking analyses to be undertaken (e.g. earnings against educational attainment).

One of the limitations of the LFS is that the sample design provides no guarantee of adequate coverage of any industry, as the survey is not industrially stratified. The LFS coverage also omits communal establishments, except NHS housing, students in halls of residence and at boarding schools. Members of the armed forces are only included if they live in private accommodation. Also, workers under 16 are not covered.

## RELEVANCE

### **Key Definitions**

The definitions of the three economic activity groups - employed, unemployed and economically inactive - which are used in the LFS are the standard International Labour Organisation (ILO) definitions. It should be noted that although the LFS uses ILO definitions, these definitions are not interpreted and applied in exactly the same way in different countries. For example, although 'working age' is a common term, different countries have different statutory school leaving and retirement ages. However, Eurostat collects data from Member States and adjusts them to produce comparable estimates.

## 2 ACCURACY

*The closeness between an estimated result and the (unknown) true value*

The main threats to accuracy are sources of error, namely sampling error and non-sampling error, where non-sampling error includes: coverage error, non-response error, measurement error, processing error and model assumption error.

Many of the sources of non-sampling error are difficult to measure. However, the LFS publishes detailed response rates for all waves of the survey and an overall response rate, including time-series (Tables 4.1 - 4.6). Response rates are also published by Government Office Region (GOR) for each wave during the particular quarter (Table 4.7). The LFS also publishes proxy response rates (Table 4.8), response rates for income questions by National Statistics (NS) socio-economic classification (Table 4.9) and attrition rates (Table 4.10).

Surveys, such as the LFS, provide estimates of population characteristics rather than exact measures. In principle, many random samples could be drawn and each would give different results, due to the fact that each sample would be made up of different people, who would give different answers to the questions asked. The spread of these results is the sampling variability, which generally reduces with increasing sample size. A confidence interval is a range of values, defined by a lower and upper bound, which indicates the variability of an estimate. Statistical methods are used to calculate the sampling variability from which the confidence interval can be determined. For example, with a 95 per cent confidence interval, it is expected that in 95 per cent of the survey samples, the resulting confidence interval will contain the true value that would be obtained by surveying the whole population.

The LFS routinely publishes details of achieved sample sizes in terms of achieved number of household and person interviews (Tables 3.1, 3.2 & 3.3) and sampling variability for estimates of key variables. Sampling variability (95% confidence intervals) can be found in the 'Sampling Variability' section (Table A11) of the [Labour Market Statistics Bulletin](#)

### 3 ACHIEVED SAMPLE

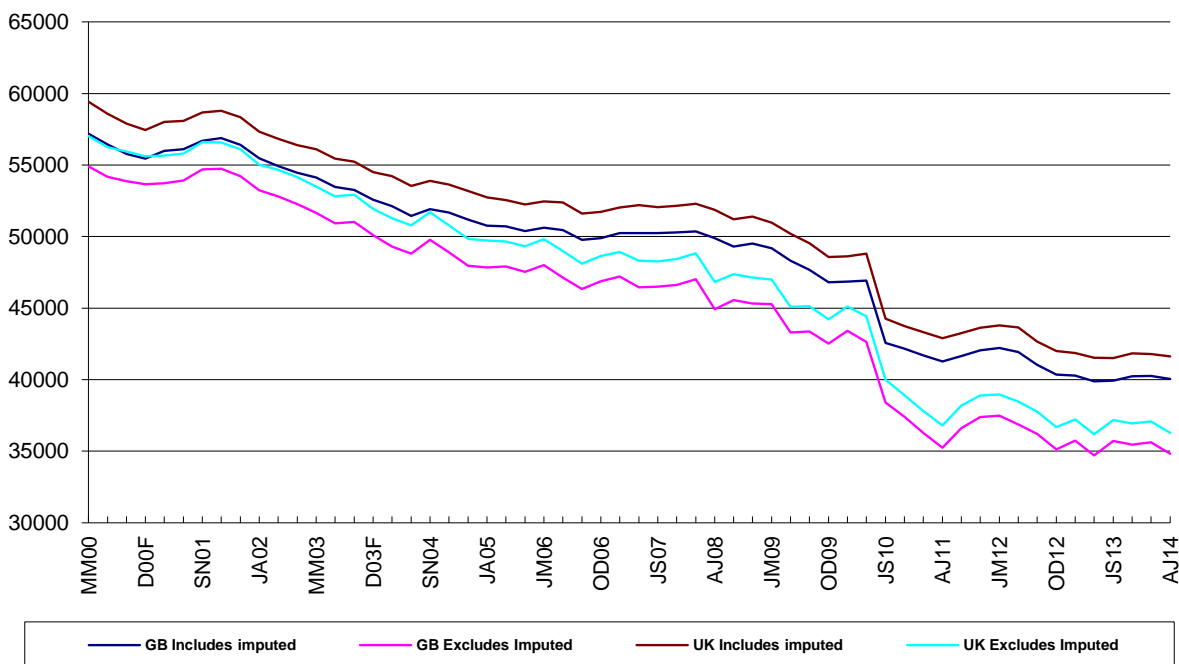
#### 3.1 LFS QUARTERLY SURVEY

Achieved sample by type of household, AJ14

	GB		UK	
	Includes imputed	Excludes imputed	Includes imputed	Excludes imputed
Private households	40,053	34,825	41,633	36,291
Individuals in private households	94,621	79,818	98,668	83,587
NHS Households	0	0	0	0
Individuals in NHS households	0	0	0	0
<i>Total households</i>	<i>40,053</i>	<i>34,825</i>	<i>41,633</i>	<i>36,291</i>
<i>Total individuals</i>	<i>94,621</i>	<i>79,818</i>	<i>98,668</i>	<i>83,587</i>

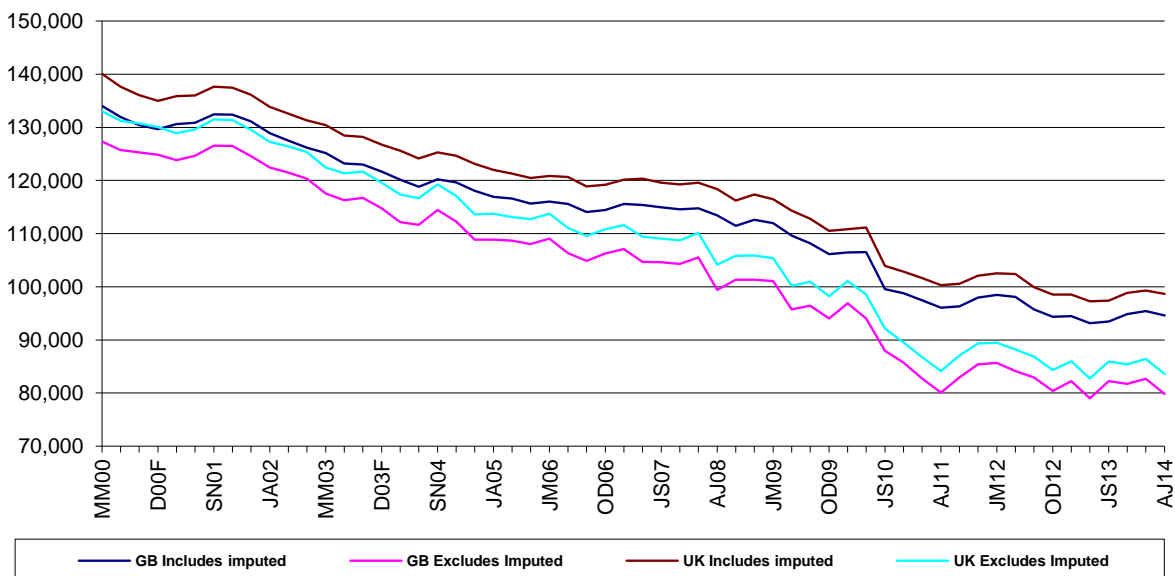
#### 3.2 LFS QUARTERLY SURVEY

Achieved number of household interviews, GB and UK, MM00 to AJ14



#### 3.3 LFS QUARTERLY SURVEY

Achieved number of person interviews, GB and UK, MM00 to AJ14



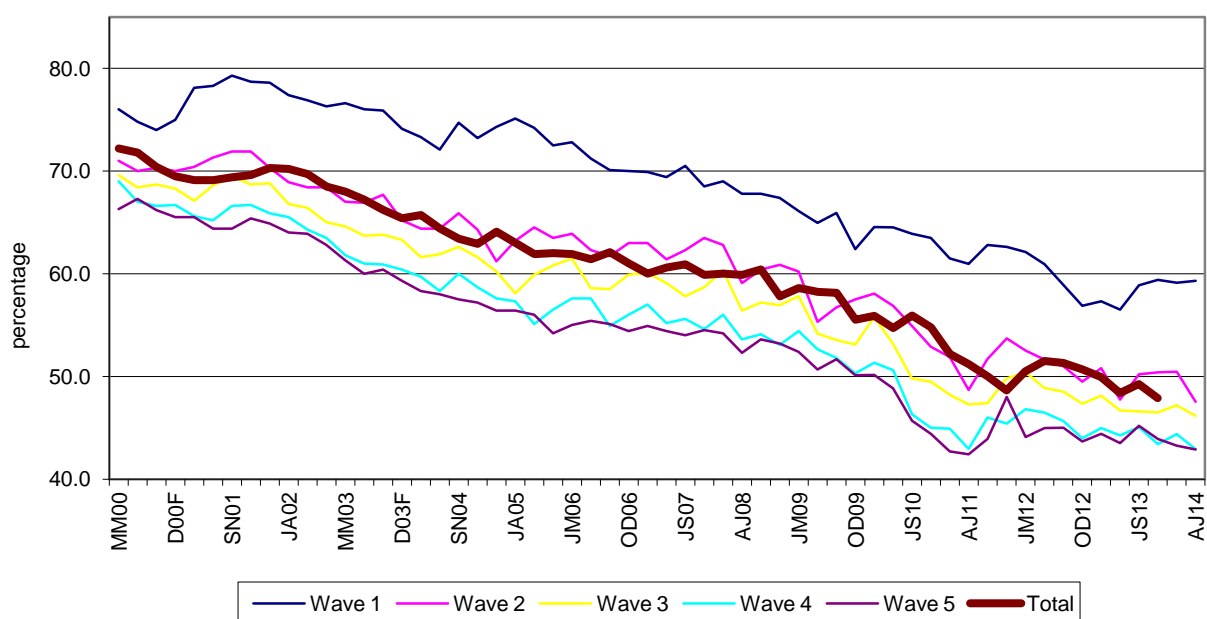
## 4 RESPONSE RATES

### 4.1 LFS QUARTERLY SURVEY Wave specific response rates, GB, excluding imputed households AJ14

	Wave 1 in AJ14		Wave 2 in AJ14		Wave 3 in AJ14		Wave 4 in AJ14		Wave 5 in AJ14		Total	
	#	%	#	%	#	%	#	%	#	%	#	%
<b>Eligible households found at selected units</b>	15,379	100.0	14,375	100.0	14,312	100.0	14,301	100.0	14,334	100.0	72,701	100.0
<b>Responding units</b>												
Total	9,122	59.3	6,830	47.5	6,604	46.1	6,139	42.9	6,145	42.9	34,840	47.9
Full	8,619	56.0	6,037	42.0	5,899	41.2	5,442	38.1	5,367	37.4	31,364	43.1
Partial	503	3.3	793	5.5	705	4.9	697	4.9	778	5.4	3,476	4.8
<b>Non-responding units</b>												
Circumstantial refusal	1,733	11.3	1,619	11.3	1,469	10.3	1,336	9.3	987	6.9	7,144	9.8
Outright refusal	2,300	15.0	3,165	22.0	3,544	24.8	3,755	26.3	4,033	28.1	16,797	23.1
Refusal to HQ	515	3.3	670	4.7	658	4.6	697	4.9	617	4.3	3,157	4.3
Non-contact	1,709	11.1	1,479	10.3	1,274	8.9	1,409	9.9	1,506	10.5	7,377	10.1
<b>Addresses not issued for interviewing</b>												
Refusal to re-interview	n/a	n/a	612	4.3	763	5.3	965	6.7	1,046	7.3	3,386	4.7
Co-operation rate		66.7		55.6		53.8		51.5		52.2		56.2
Contact rate		85.5		84.4		85.7		84.2		84.0		84.8

Note: Excludes households for which response has been imputed. The total response rate is the aggregate response rate for the quarter across all waves, based on all eligible, in-scope households. For a full definition of response categories and the method used to calculate the response rates, see Technical Definitions pg17.

### 4.2 LFS QUARTERLY SURVEY Wave specific response rates, GB, excluding imputed households, MM00 to AJ14





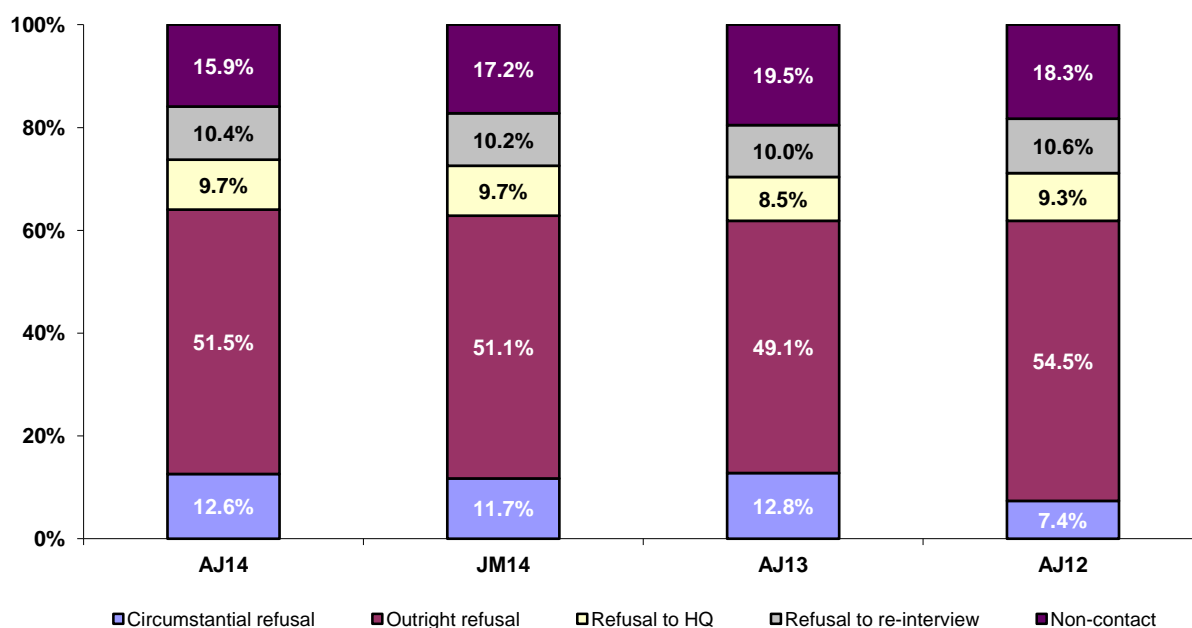
## 4 RESPONSE RATES

### 4.3 LFS QUARTERLY SURVEY Wave specific response rates, GB, AJ14, including imputed households

	Wave 1 in AJ14		Wave 2 in AJ14		Wave 3 in AJ14		Wave 4 in AJ14		Wave 5 in AJ14		Total	
	#	%	#	%	#	%	#	%	#	%	#	%
<b>Eligible households found at selected units</b>	15,379	100.0	14,375	100.0	14,312	100.0	14,301	100.0	14,334	100.0	72,701	100.0
<b>Responding units</b>												
Total	9,122	59.3	8,464	58.9	7,992	55.8	7,400	51.7	7,087	49.4	40,065	55.1
Full	8,619	56.0	6,037	42.0	5,899	41.2	5,442	38.1	5,367	37.4	31,364	43.1
Partial	503	3.3	793	5.5	705	4.9	697	4.9	778	5.4	3,476	4.8
Imputed	-	-	1,634	11.4	1,388	9.7	1,261	8.8	942	6.6	5,225	7.2
<b>Non-responding units</b>												
Circumstantial refusal	1,733	11.3	701	4.9	623	4.4	577	4.0	475	3.3	4,109	5.7
Outright refusal	2,300	15.0	3,165	22.0	3,544	24.8	3,755	26.3	4,033	28.1	16,797	23.1
Refusal to HQ	515	3.3	670	4.7	658	4.6	697	4.9	617	4.3	3,157	4.3
Non-contact	1,709	11.1	763	5.3	732	5.1	907	6.3	1,076	7.5	5,187	7.1
<b>Addresses not issued for interviewing</b>												
Refusal to re-interview	n/a	n/a	612	4.3	763	5.3	965	6.7	1,046	7.3	3,386	4.7
Co-operation rate		66.7		65.1		62.4		59.5		58.0		62.5
Contact rate		85.5		89.6		89.7		88.0		87.3		88.0

The total response rate is the cumulative response rate for the quarter across all waves, based on all eligible, in-scope households. For a full definition of response categories and the method used to calculate the response rates, see Technical Definitions pg 17.

### 4.4 LFS QUARTERLY SURVEY Composition of non-response, Great Britain, including imputed households



Note: For definitions of the types of non-response, see Technical Definitions. Figures are based on the aggregate response for the quarter covering all waves.

## 4 RESPONSE RATES

### 4.5 LFS QUARTERLY SURVEY Wave specific response rates, UK, AJ14, excluding imputed households

	Wave 1 in AJ14		Wave 2 in AJ14		Wave 3 in AJ14		Wave 4 in AJ14		Wave 5 in AJ14		Total	
	#	%	#	%	#	%	#	%	#	%	#	%
<b>Eligible households found at selected units</b>	15,960	100.0	14,956	100.0	14,914	100.0	14,884	100.0	14,954	100.0	75,668	100.0
<b>Responding units</b>												
Total	9,470	59.3	7,098	47.5	6,900	46.3	6,405	43.0	6,433	43.0	36,306	48.0
Full	8,962	56.2	6,293	42.1	6,183	41.5	5,699	38.3	5,646	37.8	32,783	43.3
Partial	508	3.2	805	5.4	717	4.8	706	4.7	787	5.3	3,523	4.7
<b>Non-responding units</b>												
Circumstantial refusal	1,765	11.1	1,634	10.9	1,487	10.0	1,349	9.1	997	6.7	7,232	9.6
Outright refusal	2,414	15.1	3,213	21.5	3,563	23.9	3,780	25.4	4,050	27.1	17,020	22.5
Refusal to HQ	527	3.3	672	4.5	658	4.4	700	4.7	617	4.1	3,174	4.2
Non-contact	1,784	11.2	1,571	10.5	1,366	9.2	1,476	9.9	1,573	10.5	7,770	10.3
<b>Addresses not issued for interviewing</b>												
Refusal to re-interview			768	5.1	940	6.3	1,174	7.9	1,284	8.6	4,166	5.5
Co-operation rate		66.8		56.3		54.7		52.4		53.2		57.0
Contact rate		85.5		84.2		85.5		84.1		84.0		84.7

Note: Excludes households for which response has been imputed. The total response rate is the aggregate response rate for the quarter, based on all eligible, in-scope households. See Technical Definitions (pg 17) for a full definition of response categories and the method used to calculate the response rates.

### 4.6 LFS QUARTERLY SURVEY Wave specific response rates, UK, AJ14, including imputed households

	Wave 1 in AJ14		Wave 2 in AJ14		Wave 3 in AJ14		Wave 4 in AJ14		Wave 5 in AJ14		Total	
	#	%	#	%	#	%	#	%	#	%	#	%
<b>Eligible households found at selected units</b>	15,960	100.0	14,956	100.0	14,914	100.0	14,884	100.0	14,954	100.0	75,668	100.0
<b>Responding units</b>												
Total	9,470	59.3	8,766	58.6	8,324	55.8	7,687	51.6	7,398	49.5	41,645	55.0
Full	8,962	56.2	6,293	42.1	6,183	41.5	5,699	38.3	5,646	37.8	32,783	43.3
Partial	508	3.2	805	5.4	717	4.8	706	4.7	787	5.3	3,523	4.7
Imputed	-	-	1,668	11.2	1,424	9.5	1,282	8.6	965	6.5	5,339	7.1
<b>Non-responding units</b>												
Circumstantial refusal	1,765	11.1	713	4.8	635	4.3	587	3.9	482	3.2	4,182	5.5
Outright refusal	2,414	15.1	3,213	21.5	3,563	23.9	3,780	25.4	4,050	27.1	17,020	22.5
Refusal to HQ	527	3.3	672	4.5	658	4.4	700	4.7	617	4.1	3,174	4.2
Non-contact	1,784	11.2	824	5.5	794	5.3	956	6.4	1,123	7.5	5,481	7.2
<b>Addresses not issued for interviewing</b>												
Refusal to re-interview			768	5.1	940	6.3	1,174	7.9	1,284	8.6	4,166	5.5
Co-operation rate		66.8		65.6		63.2		60.3		59.0		63.1
Contact rate		85.5		89.5		89.6		87.9		87.3		87.9

Note: The total response rate is the aggregate response rate for the quarter, based on all eligible, in-scope households. For a full definition of response categories and the method used to calculate the response rates, see Technical Definitions (pg 17).

## 4 RESPONSE RATES

### 4.7 LFS QUARTERLY SURVEY Wave specific response rates, AJ14, including imputed households, by Region

Region	Wave 1 in AJ14	Wave 2 in AJ14	Wave 3 in AJ14	Wave 4 in AJ14	Wave 5 in AJ14	Total
Tyne & Wear	60.3	68.4	62.3	59.1	54.5	60.9
Rest of North East	65.0	59.1	58.4	50.8	53.4	57.5
Greater Manchester	60.5	57.9	56.6	52.0	48.5	55.1
Merseyside	55.1	56.5	52.4	47.9	45.6	51.5
Rest of North West	58.5	61.1	58.5	54.8	46.6	55.9
South Yorkshire	65.1	61.4	57.6	52.2	54.7	58.3
West Yorkshire	66.3	64.8	62.1	53.6	57.7	61.0
Rest of Yorkshire and Humberside	65.7	60.6	60.7	55.3	56.5	59.8
East Midlands	60.6	59.4	57.9	54.9	48.8	56.4
West Midlands Metropolitan Council	57.0	58.1	51.4	44.6	44.9	51.2
Rest of West Midlands	58.5	60.7	53.0	52.6	47.8	54.5
East of England	62.4	59.2	56.3	53.8	52.6	56.9
Inner London	51.7	54.2	51.6	47.8	48.8	50.8
Outer London	56.5	53.7	52.5	45.8	43.3	50.4
South East	56.7	59.2	55.8	53.5	49.8	55.0
South West	58.4	57.1	56.7	51.6	50.4	54.9
<b>England</b>	<b>59.2</b>	<b>58.8</b>	<b>56.0</b>	<b>51.9</b>	<b>49.7</b>	<b>55.2</b>
<b>Wales</b>	<b>59.2</b>	<b>60.3</b>	<b>55.4</b>	<b>51.1</b>	<b>51.0</b>	<b>55.5</b>
Strathclyde	62.4	59.4	56.5	47.5	46.5	54.7
Rest of Scotland	60.0	58.9	52.8	53.3	46.6	54.5
<b>Scotland</b>	<b>61.0</b>	<b>59.1</b>	<b>54.4</b>	<b>50.9</b>	<b>46.6</b>	<b>54.5</b>
<b>Northern Ireland</b>	<b>59.9</b>	<b>52.0</b>	<b>55.1</b>	<b>49.2</b>	<b>50.2</b>	<b>53.3</b>

Note:

The total response rate is the aggregate response rate for the quarter, based on all eligible, in-scope households. Each wave reported here is an independent sample; for example, the wave 2 response in AJ14 is based on response in that quarter plus the previous quarter (JM14) where it was issued as a wave 1 case.

## 4 RESPONSE RATES

### 4.8 LFS QUARTERLY SURVEY Proxy response, GB, AJ14

		All responses	Proxy	%
<b>Age</b>	Total (16+)	74,235	25,358	34.2
	16-17	2,452	2,163	88.2
	18-19	2,135	1,612	75.5
	20+	69,648	21,583	31.0
<b>Sex</b>	Total	74,235	25,358	34.2
	Male	35,480	14,046	39.6
	Female	38,755	11,312	29.2
<b>Ethnicity</b>	Total	74,235	25,358	34.2
	White	66,227	21,868	33.0
	Non-white	7,968	3,481	43.7
	Refused	40	9	22.5
<b>Economic activity (INECAC05)</b>	Total	74,235	25,358	34.2
	Employees	38,048	13,261	34.9
	Self-Employed	6,898	2,361	34.2
	Government schemes	178	46	25.8
	Unpaid family workers	165	34	20.6
	ILO Unemployed	2,839	1,043	36.7
	Inactive	26,107	8,613	33.0

Note: For definition of 'unpaid family workers', see Section 7 (pg 13).

### 4.9 LFS QUARTERLY SURVEY Income Response Rates by NS-SEC, GB, AJ14

<b>NS-SEC</b>	Wave 1 in AJ14	Wave 5 in AJ14	Total
	%	%	%
Higher managerial and professional	88.0	88.3	88.1
Lower managerial and professional	86.9	89.8	88.1
Intermediate occupations	83.9	88.7	85.9
Small employers and own account workers	76.9	72.7	75.7
Lower supervisory and technical	81.4	85.4	83.0
Semi-routine occupations	82.1	82.9	82.4
Routine occupations	80.0	83.2	81.2
<b>Total</b>	<b>84.4</b>	<b>87.1</b>	<b>85.5</b>

Note: The percentages in Table 4.9 are based on all eligible in-scope respondents at wave 1 and all eligible in-scope respondents at wave 5. The total response rate is the aggregate response rate for income for the quarter (wave 1 and wave 5), based on all eligible, in-scope respondents.

## 4 RESPONSE RATES

### 4.10 LFS QUARTERLY SURVEY Summary of attrition by key characteristics, GB, AJ14

Column percentages

		Wave 1 in AJ14	Wave 5 in AJ14	Responds all waves	Non-responder
		Responds	Responds		
<b>Age</b>	<16	21.7	20.6	18.2	22.8
	16-19	4.6	4.4	4.2	4.8
	20-29	11.2	8.0	6.3	14.6
	30-39	13.0	11.9	10.5	14.2
	40-49	14.8	14.4	13.4	15.2
	50-59	14.0	14.8	15.6	13.2
	60-69	14.2	17.5	21.2	10.7
	70+	6.6	8.5	10.7	4.6
<b>Sex</b>	Male	48.5	48.3	48.5	48.6
	Female	51.5	51.7	51.5	51.4
<b>Econ Activity (INECAC05)</b>	Employees	40.0	38.5	36.7	41.6
	Self Emp	6.9	6.7	6.4	7.2
	GovTraining Scheme	0.2	0.2	0.1	0.2
	UPFW(Unpaid Family Workers)	0.2	0.2	0.3	0.1
	ILO Unemp	3.7	3.4	3.3	3.9
	Inactive	27.4	30.4	35.0	24.2
<b>Number of people in household (TOTNUM)</b>	1	9.5	11.1	12.8	7.9
	2	30.5	34.0	37.2	26.9
	3	21.2	19.3	18.7	23.2
	4	23.5	22.3	19.3	24.6
	5	9.5	9.1	8.4	9.8
	6 or more	5.8	4.2	3.6	7.5
<b>Region (GOVTOR)</b>	Tyne & Wear	2.0	1.9	1.7	2.2
	Rest of North East	2.4	2.6	2.1	2.2
	Greater Manchester	4.8	4.0	3.6	5.7
	Merseyside	2.4	2.4	2.1	2.4
	Rest of North West	5.3	5.3	5.3	5.4
	South Yorkshire	2.5	2.7	2.7	2.4
	West Yorkshire	3.9	3.6	3.5	4.1
	Rest of Yorkshire and Humberside	3.2	3.2	3.3	3.2
	East Midlands	8.1	8.2	8.5	8.0
	West Midlands Metropolitan Council	3.9	3.8	4.0	4.0
	Rest of West Midlands	4.7	5.0	5.2	4.5
	East of England	10.0	11.4	10.9	8.4
	Inner London	4.9	3.7	2.9	6.3
	Outer London	7.1	5.3	5.3	8.9
	South East	13.7	14.9	15.9	12.4
	South West	8.2	9.2	9.6	7.1
Wales	4.9	5.2	5.3	4.6	
Strathclyde	3.4	3.3	3.4	3.5	
Rest of Scotland	4.7	4.6	4.5	4.8	

Note: The column, Wave 1 in AJ14 Responds, shows the percentage of responders in each key characteristics category at wave 1. The column, Wave 5 in AJ14 Responds, shows the percentage of responders in each key characteristics category at wave 5. A significant decline in the values between waves 1 and 5 denotes a higher rate of attrition than where values are consistent between waves 1 and 5 or higher at wave 5.

## 5 TIMELINESS AND PUNCTUALITY

*Timeliness refers to the lapse of time between publication and the period to which the data refer. Punctuality refers to the time lag between the actual and planned dates of publication.*

### 3 Delivery dates of data

#### 3.1 To ONS Labour Market Division (LMD)

Scheduled delivery date for file: July 21, 2014

Achieved delivery date for file: July 28, 2014

Time lag between achieved delivery date and the end of the reference period: 28 days

#### 3.2 Data file for other users

Scheduled availability date for Regional Public & Government normal release user files: August 13, 2014

##### *Recipients*

Bank of England  
Department for Business Innovation and Skills  
Department for Communities and Local Government  
Department for Education and Skills  
Department for Enterprise, Trade and Investment (Northern Ireland)  
Department for Media, Culture and Sport  
Department for Transport  
Department for Work and Pensions  
Department of Finance and Personnel (Northern Ireland)  
Economic and Social Research Council / Data Archive  
Health and Safety Executive  
HM Treasury  
Home Office  
Low Pay Commission  
Office for Standards in Education  
Office of Manpower Economics  
Scottish Government / Scottish Executive  
Small Business Service  
Welsh Government

## 6 ACCESSIBILITY AND CLARITY

*Accessibility is the ease with which users are able to access the data, also reflecting the format(s) in which the data are available and the availability of supporting information. Clarity refers to the quality and sufficiency of the metadata, illustrations and accompanying advice.*

The UK Data Archive at Essex University provides free access to the various LFS datasets and can be contacted via the website: <http://www.data-archive.ac.uk>

A highly disaggregated dataset, which covers a wealth of data for local areas, is available free from NOMIS: <http://www.nomisweb.co.uk>

The Social Surveys Team provide LFS data for a fee, and can be contacted by phone (01633 455678) or email: [socialsurveys@ons.gsi.gov.uk](mailto:socialsurveys@ons.gsi.gov.uk)

Labour Market data, including data from the LFS, are published every month through Statistical Bulletins These include text, tables and charts. Data contained within the Bulletins are available to download, free of charge, from the ONS website. All the main series contained within the releases are available from:

<http://www.ons.gov.uk/ons/taxonomy/index.html?nscl=Labour+Market>

For questions relating to Labour Market statistics, please contact: [labour.market@ons.gsi.gov.uk](mailto:labour.market@ons.gsi.gov.uk)

For general queries about the LFS, please contact: [lfs@ons.gsi.gov.uk](mailto:lfs@ons.gsi.gov.uk)

## 7 COMPARABILITY

*The degree to which data can be compared over time and domain*

### **Background**

The LFS began in 1973 and was carried out every 2 years until 1983. Between 1984 and 1991, data were collected annually and the survey has been running in its present form, with quarterly sampling, since spring 1992. It is carried out under European Union Regulations which specify the way in which the survey should be conducted, the quality of the results that Member States supply to Eurostat and the timetable for supplying results. Although the LFS began as a survey designed to meet international obligations, its primary purpose is now (as stated in section 1, Relevance), "the prompt publication of key aggregate, whole economy, indicators, for the integrated assessment of labour market conditions" (Review of the Labour Force Survey, ONS, 2002).

### **Definitions**

The definitions of the three economic activity groups - employed, unemployed and economically inactive - which are used in the LFS are the standard International Labour Organisation (ILO) definitions.

**Economically active** - those aged 16 or over, who are either employed or unemployed in the survey reference week.

**Employed** - those aged 16 or over, who are regarded as in employment if they did at least one hour of work in the reference week (as an employee, self-employed, unpaid workers in a family business or participants in government-supported training schemes) and those who had a job that they were temporarily away from (for example, if they are on holiday).

**Unemployed** - those aged 16 or over, who are without work, want a job, have actively sought work in the last four weeks and are available to start work in the next two weeks; or are out of work but have found a job and are waiting to start it within the next two weeks.

**Economically inactive** - those who are neither in employment nor unemployed. This group includes, for example, all those who are looking after a home or family, have a long-term illness or disability which prevents them working or are retired.

**Unpaid family workers** - those who are doing unpaid work in a family business.



## 7 COMPARABILITY

### Questionnaire Changes

**New questions for AJ14:** New benefits questions TPBEN13 ( replaces TPBEN09), BENOTH, UCREDIT, DISBEN (replaces SKDSBN9) and PENBN13 ( replaces PENBEN3) have been introduced.

**Amended questions forAJ14:** The routing has been amended for some of the benefits questions , UNEMBN, JSATYP, JSADUR, INCSUP and HSNGB. The characteristic variables have been made wave 1 / first contact , this will include all questions that relate to the following; Nationality, Country of birth, Arrival to the UK, Reasons for coming to the UK, National Identity, Welsh language , Ethnicity and Religion. Many other questions have been made wave 1 only ;ATFROM, SMESIT, YNOTFT, YPTCIA, EVNGHT, NIGHT, EVEVE, EVENG, EVDAY, EVSAT, SATDY, EVSUN and SUNDY. Some others being made JM specific ;FWKWEN , AXPB and AXFB.

**Deleted questions for AJ14:** Some benefits questions have been replaced TPBEN09, PENBEN3 and SKDSBN9 with FAMLY03, HSNNGNI, NTAXCRD5 and CCTC5 being removed completely. HOMED2, ATFRM2, SMEST2, OMROLE, HM4WK, TELQA2, TELQB2, INTPROB and INTPROB2 have also been removed .

### Fieldwork Issues

No field work issues for this period.

### Methodology

See page iii for full details of methodological changes; in JM11 a change was implemented to move some wave one interviews into the telephone unit, rather than being face to face interviews as would normally be the case.

## 8 COHERENCE

*The degree to which data that are derived from different sources or methods, but which refer to the same phenomenon, are similar*

### **Data Sources**

The LFS is one of a number of sources of data about the labour market. Some sources provide data which overlap with LFS data on employment, unemployment and earnings. ONS has published guidance about the strengths and limitations of each source in relation to these topics and has indicated which source is the most appropriate for different purposes. Details can be found in the Labour Market Guide, which can be accessed from the website:

<http://www.ons.gov.uk/ons/taxonomy/index.html?nscl=Labour+Market>

### **Employment, Unemployment and Economic Inactivity**

The LFS is the source recommended by ONS for certain employment-related statistics (e.g. estimates of the number of people in employment or unemployed). The LFS is also a unique source of comprehensive, coherent information about economic inactivity, where it provides information separately about people who want a job and those who do not.

### **Number and Industrial Composition of Jobs**

The workforce jobs (WFJ) series provides estimates of the number of jobs in the UK economy and is the source recommended by ONS for both the number of jobs and the industrial composition of jobs. Workforce jobs consist of the sum of employee jobs, self-employment jobs, jobs in the armed forces and government-supported trainees. Civilian workforce jobs are available by geographical region, gender and broad industry. Total workforce jobs are available by gender and broad industry.

### **Earnings**

For estimates of change in earnings (e.g. pay growth in the economy), a non-LFS source, the Average Weekly Earnings (AWE) (formerly the Average Earnings Index (AEI)) is the most suitable source. It provides industry and whole-economy information, but excludes small employers, the self-employed and government-supported trainees. Pay, commission, bonuses, overtime and pay award arrears are included, but redundancy payments and benefits in kind are excluded. The Annual Survey of Hours and Earnings (ASHE) includes information about the levels, distribution and make-up of earnings and hours worked for employees in different occupations, industries, ages and regions. It should be used when the information required is not available from the AWE (such as for occupational groups, or regional analyses), and is the preferred source of the earnings of full-time employees, and of the average hourly earnings of all employees. The LFS should be used when the information is not available from the AWE or from ASHE, and is the preferred source of data about the earnings of part-time and low-paid

## SUMMARY OF METHODS

The LFS covers private households, including persons who are temporarily absent. The resident population comprises persons who regard the sample address as their main address, and also those who have lived in the dwelling for more than six consecutive months, even if they do not regard this as their principal dwelling. Persons absent for more than six months are not regarded as members of the resident population. A private household comprises one or more persons whose main residence is the same dwelling and/or who share at least one meal per day. Students living in halls of residence and pupils at boarding school are sampled via the private households of their parents. In Great Britain, an additional sample is drawn from persons living in National Health Service accommodation.

The year is divided into quarters of 13 weeks. Prior to January 2006, these were seasonal quarters: winter (December to February), spring (March to May), summer (June to August) and autumn (September to November). From January 2006, the LFS has been conducted on the basis of calendar quarters: Q1 - January to March, Q2 - April to June, Q3 - July to September and Q4 - October to December.

For most of Great Britain, the survey base is the Royal Mail's PAF (Postcode Address File), a database of all addresses receiving mail. The list is limited to addresses receiving fewer than 25 items of post per day, so as to exclude businesses. Because of the very low population density in the far north of Scotland (north of the Caledonian Canal), telephone directories are used as sampling frames, and interviews are carried out by telephone because face-to-face interviews would be too expensive. In Northern Ireland POINTER, which is the government's central register of domestic properties, is used.

In Great Britain, a systematic sample is drawn each quarter from the three sampling bases, yielding 16,640 PAF addresses, 75 telephone numbers for the north of Scotland and 36 units of National Health Service housing. As the PAF is broken down geographically, the systematic sampling ensures that the sample is representative at regional level. In Northern Ireland, a simple random sample is drawn, each quarter, from each of three strata, giving 650 addresses in all.

A rotation system comprising five waves is used. Respondents are interviewed five times at 13-week intervals and one-fifth of the sample is replaced each quarter. Interviews are carried out on a face-to-face (CAPI) or telephone (CATI) basis with the help of portable computers for the interviews in the first wave. In the far north of Scotland (north of the Caledonian Canal) and for interviews in the second to fifth waves, wherever possible, interviews are carried out by telephone.

## TECHNICAL DEFINITIONS

### Imputation

If a household (or someone within a household) is unavailable for interview, but was interviewed in the previous wave, responses from the previous wave are rolled forward. This is referred to as 'imputation'. Imputation is carried out to minimise non-response bias in estimates, while simultaneously improving precision by boosting the sample size. The rationale is that most LFS variables do not change from one quarter to another for most people. Responses are rolled forward for one wave only. Data are not rolled forward after a second consecutive non-response. Tables and charts (at person or household level) containing responses which have been rolled forward from the previous wave are denoted by the term 'including imputed'. Tables and charts which do not contain responses which have been rolled forward from the previous wave are denoted by the term 'excluding imputed'.

### Method of Calculating Sampling Variability

The sampling variability is the spread of results which would be obtained if different samples were drawn. A confidence interval is a range of values, defined by a lower and upper bound, which indicates the variability of an estimate. Statistical methods are used to calculate the sampling variability from which the confidence interval can be determined. For example, with a 95 per cent confidence interval, it is expected that in 95 per cent of the survey samples, the resulting confidence interval will contain the true value that would be obtained by surveying the whole population.

### Method of Calculating Response Rates

The response rate indicates how many interviews were achieved as a proportion of those eligible for the survey. The formula used is as follows:

$$RR = (FR + PR)/(FR + PR + OR + CR + RHQ + NC + RRI^*)$$

where RR = response rate, FR = full response, PR = partial response, OR = outright refusal, CR = circumstantial refusal, RHQ = refusal to HQ, NC = non contact, RRI = refusal to re-interview, \*applies to waves 2 to 5 only.

### Definitions of Response Outcome Categories

A **full response** denotes a household in which each household member has answered all applicable questions.

A **partial response** denotes a household in which questions were not completed because someone refused to be interviewed, refused part way through the questionnaire or refused to let someone else answer on his or her behalf. However, at least one question block must have been completed. If only part information has been collected for a one-person household, it is coded as a refusal or non-contact.

An **outright refusal** is a household which refuses to respond to the survey and the interviewer feels that there is no chance of an interview at the current or in any future wave.

A **circumstantial refusal** is a household where the respondent refuses to respond because of a temporary circumstance (e.g. going on holiday, too busy during the field period). A circumstantial refusal enables an interviewer to call back at the next wave.

A **refusal to HQ** is a household which contacts headquarters to refuse to participate in the survey in response to the advance letter.

A **non-contact** arises when an address is occupied, but where it has not been possible to contact any member of the household in the field period.

A **refusal to re-interview** is a household which takes part in the survey (at one or more of waves one to four) but which, when asked to take part in the next wave (waves two to five), refuses.

## TECHNICAL DEFINITIONS

### **Method of Calculating Income Response Rates**

The income question is asked at wave 1 and wave 5 only. Individuals aged 16-69 who are in employment in the reference week, form the sub-set of respondents who are eligible for these questions. The percentage response rates for the income questions are based on all eligible, in-scope respondents at wave 1 and all eligible, in-scope respondents at wave 5. The total response rate is the aggregate response rate for income for the quarter (wave 1 and wave 5), based on all eligible, in-scope respondents.

### **NS-SEC**

NS-SEC is the National Statistics Socio-Economic Classification, which replaces previous classifications which were based on social class and social and economic group.

### **Proxy Response**

The LFS has to complete fieldwork to a tight timetable and interview as many of the sampled households as possible, which leaves limited time for recalls. LFS interviewers try to interview every adult (aged 16+) in each sampled household. However, when a household member is unavailable for interview, interviewers accept information by proxy from another responsible adult in the household. The proxy respondents are normally people living with a partner on behalf of their partner, and parents on behalf of their adult offspring who live with them.

### **Attrition**

Attrition is the term applied to respondents who begin the survey but subsequently drop out. It has been known for some time that these respondents tend to have different characteristics to those who remain in all waves of the survey, which can, therefore, result in attrition bias. For example, if respondents in a particular age band have a higher tendency to drop out (attrition rate) than respondents in other age bands, then they will be under-represented in subsequent waves of the survey and in estimates.

## WEBSITE REFERENCES

Labour Force Survey User Guides	<a href="http://www.ons.gov.uk/ons/guide-method/method-quality/specific/labour-market/labour-market-statistics/index.html">http://www.ons.gov.uk/ons/guide-method/method-quality/specific/labour-market/labour-market-statistics/index.html</a>
Labour Market Statistics Statistical Bulletin	<a href="http://www.ons.gov.uk/ons/taxonomy/index.html?scl=Labour+Market#tab-sum-pub">http://www.ons.gov.uk/ons/taxonomy/index.html?scl=Labour+Market#tab-sum-pub</a>
Labour Force Survey Summary Quality Report	<a href="http://www.ons.gov.uk/ons/guide-method/method-quality/quality/quality-information/social-statistics/quality-and-methodology-information-for-the-labour-force-survey--lfs-.pdf">http://www.ons.gov.uk/ons/guide-method/method-quality/quality/quality-information/social-statistics/quality-and-methodology-information-for-the-labour-force-survey--lfs-.pdf</a>
Methodology for the Calculation of Sampling Variability in the Labour Force Survey	<a href="http://www.ons.gov.uk/ons/guide-method/method-quality/specific/labour-market/articles-and-reports/the-calculation-of-sampling-variability-for-the-labour-force-survey.pdf">http://www.ons.gov.uk/ons/guide-method/method-quality/specific/labour-market/articles-and-reports/the-calculation-of-sampling-variability-for-the-labour-force-survey.pdf</a>
NOMIS	<a href="http://www.nomisweb.co.uk">www.nomisweb.co.uk</a>
Summary Quality Report for Labour Market Data Releases	<a href="http://www.ons.gov.uk/ons/guide-method/method-quality/quality/quality-information/business-statistics/new-component.pdf">http://www.ons.gov.uk/ons/guide-method/method-quality/quality/quality-information/business-statistics/new-component.pdf</a>
UK Data Archive, University of Essex	<a href="http://www.data-archive.ac.uk">http://www.data-archive.ac.uk</a>



**Performance and Quality  
Monitoring Report**  
July to September 2014

**Labour  
Force  
Survey**

# Table of Contents

<b>Executive Summary</b>	ii
<b>Summary of Quality</b>	
<b>1 Relevance</b>	<b>1</b>
<b>2 Accuracy</b>	<b>3</b>
<b>3 Achieved Sample</b>	<b>4</b>
<b>4 Response Rates</b>	<b>5</b>
<b>5 Timeliness and punctuality</b>	<b>11</b>
<b>6 Accessibility and clarity</b>	<b>12</b>
<b>7 Comparability</b>	<b>13</b>
<b>8 Coherence</b>	<b>15</b>
<b>Summary of Methods</b>	<b>16</b>
<b>Technical Definitions</b>	<b>17</b>
<b>Website References</b>	<b>19</b>
<b>List of Tables/Figures</b>	
3.1 Achieved sample by type of household, GB & UK, JS14	4
3.2 Achieved number of household interviews, GB and UK, MM00 to JS14	4
3.3 Achieved number of person interviews, GB and UK, MM00 to JS14	4
4.1 Wave specific response rates, GB, JS14, excluding imputed households	5
4.2 Wave specific response rates, GB, excluding imputed households, MM00 to JS14	5
4.3 Wave specific response rates, GB, JS14, including imputed households	6
4.4 Composition of non-response, GB, JS14, including imputed households	6
4.5 Wave specific response rates, UK, JS14, excluding imputed households	7
4.6 Wave specific response rates, UK, JS14, including imputed households	7
4.7 Wave specific response rates, JS14, including imputed, by Region	8
4.8 Proxy response, GB, JS14	9
4.9 Income response rates by NS-SEC, GB, JS14	9
4.10 Summary of attrition by key characteristics, GB, JS14	10

Note: In previous versions of this document a table detailing sampling variability (previously Table 2.4) was included. Sampling variability (95% confidence intervals) can be found in the 'Sampling Variability' section (Table A11) of the [Labour Market Statistics Bulletin](#)



# Executive Summary

## July to September 2014

**Note:** Due to the move from processing the LFS on a seasonal quarter basis to processing on a calendar quarter basis from January 2006, all time series data have a break in series which corresponds to this change.

**Note:** The July - September 2014 data are published on the new 2014 population weight base, which is derived from the census 2011 population estimates.

### Summary of achieved sample size

- The achieved sample size for the UK LFS during July to September (JS14) was 95,950 individuals in 40,865 households . Please note: that there were no NHS households in this period.
- Compared to the previous quarter (AJ14) this represents a decrease of 1.84% in household interviews, and a decrease of 2.75% in achieved person interviews.

### Summary of response rates

[Please note that historical reports can be accessed on the ONS web site.](#)

In JS14 key response rates were as follows:

- The total response rate for GB excluding imputed cases (Table 4.1, page 5) was 47.1%. This is down 0.8 percentage points on the previous quarter.
- The response rate excluding imputed cases (Fig 4.2, page 5) was 59.1% in wave 1 and 42.1% in wave 5. This compares with 59.3% and 42.9% respectively in the previous quarter.
- The total response rate for GB including imputed cases (Table 4.3, page 6) was 54.2%, down 0.9 percentage points on the previous quarter.
- Of non-response in JS14 (Fig 4.4, page 6), Non-Contacts comprised 16.4% (up 0.5 percentage points on the previous quarter). Circumstantial Refusals were 12.3%, (down 0.3 percentage points) Outright Refusals comprised 51.4% (down 0.1 percentage points on the previous quarter) and other refusals comprised the remainder.
- The region with the highest accumulated response rate across the five waves (Table 4.7, page 8) was 'Tyne & Wear' (60.9%). The lowest was 'Merseyside' (49%)
- The overall proxy response rate (Table 4.8, page 9) is 34%. The highest proxy response rates occur in the 16-17 age group (88.2%), in males (39.6%) and in the non-white ethnicity group (43.6%).
- The average income response rate (Table 4.9, page 9) was 85.4%.
- The data on attrition rates reveal that those who drop out of the survey between waves 1 and 5, tend to be distributed fairly evenly by key characteristics, but are over-represented in the 20 - 29 age bands, in households with 6 or more people, those who were on government training schemes and amongst those living in Inner or outer London. (Table 4.10, page 10).

**Note:** Methodological changes in JM11 and JS10 have impacted response rates. From JM11 a proportion of initial interviews have been conducted by the telephone unit rather than face to face as an efficiency measure. Telephone interviews generally have higher levels of non-response. The removal of households with residents aged 75 and older after their initial interview from JS10 also impacts response as these households generally have high response rates. See the 'Questionnaire Changes' section below for more details.

## Executive Summary (Continued)

### Questionnaire Changes

As of April 2010 the state pension age for women changed in a stepwise fashion, going up by one month every two months, until 65 is reached in April 2020. The LFS has changed its definition of 'pension age' from April 2010 to be all those aged 65 and over irrespective of gender.

From JS10, households that only contain respondents aged 75 and older are removed from the sample after their wave one interview. This change was introduced to reduce the cost of the survey and reduce the burden on respondents. Households only containing individuals aged 75 or older are largely economically inactive and therefore the value of interviewing these households is greatly reduced when considering the main aims of the LFS. The wave one interviews from 75 plus households will receive a larger weight to make them representative of the UK population. This change results in around a 10% reduction in the household sample size and a 7% reduction in the individual sample size.

From JS10, the treatment of 'concealed multi-households' on the LFS has also changed. Previously if one sampled address turned out on inspection to be, for example, not one house but six flats, all six flats would be recorded as households and interviews would be attempted with each household. The number of households encountered could be in the hundreds. This was not a practical approach. ONS decided to harmonise the approach to multi-households across all ONS social surveys. From JS10 if a concealed multi-household is recorded only one household will be randomly selected to be interviewed.

Following a pilot run in JS10, from JM11 onwards a proportion of wave 1 cases (around 15-20%) have been interviewed by the Telephone Unit (TU) as opposed to the traditional face-to-face method (FtF). Sampled addresses are matched to telephone numbers in order to do this. Potential concerns associated with this approach are twofold; that response rates will fall as sampled respondents may be more likely to refuse a telephone survey, and that mode effects may be observed in the data collected. This situation will be monitored.

Details of Fieldwork Issues and New, Amended and Deleted questions can be found in Section 7 (page 14).

# SUMMARY OF QUALITY

## 1 RELEVANCE

*The degree to which the statistical product meets user needs for both coverage and content*

### **Primary Purpose**

The primary purpose of the LFS is "the prompt publication of key aggregate, whole economy, indicators, for the integrated assessment of labour market conditions" (Review of the Labour Force Survey, ONS, 2002). The 'labour market' covers all aspects of people's work, including the education and training needed to equip them for work, the jobs themselves, job-search for those out of work, and income from work and benefits.

### **Users and Uses**

Users of LFS data often combine it with related data from other sources to provide an overall view of the state of the labour market. One of the most important users of this sort of assessment is the Bank of England's Monetary Policy Committee, which sets interest rates in order to meet the Government's inflation target.

Other key users of LFS data are HM Treasury and the Department for Work and Pensions, because they are responsible for UK economic and labour market policy. They are interested in a variety of indicators of the state of the labour market, including the number of people in employment, the number of hours worked, and the number of unemployed people (defined according to the International Labour Organisation - ILO). They often analyse these series by age groups, by regions and by gender. Other Government users include the Department for Business, Innovation and Skills (BIS), the Home Office, the Health & Safety Executive, the Scottish Government, and the Welsh Government.

At the international level, LFS data are used by the European Parliament, Council and Commission, the European Central Bank and DG Employment (Directorate-General for Employment, Social Affairs and Equal Opportunities). It is also used by the Organisation for Economic Co-operation and Development (OECD) and the International Labour Organisation (ILO).

Other users include local authorities, the Trades Union Congress (TUC), the Employer's Association, the Confederation of British Industry, the Institute of Employment Studies, the Institute for Public Policy Research, the National Institute of Economic and Social Research, the Policy Studies Institute, the Institute for Fiscal Studies, academic researchers, the media and the general public.

### **Strengths and Limitations**

The strengths of the LFS are that it has the largest coverage of any household survey in the UK and can thus generate statistics for small geographical areas. In addition, the sampling errors are relatively small, as a result of the wave structure and the size of the survey. The survey covers a large range of employment-related variables and non-employment-related variables, allowing cross-linking analyses to be undertaken (e.g. earnings against educational attainment).

One of the limitations of the LFS is that the sample design provides no guarantee of adequate coverage of any industry, as the survey is not industrially stratified. The LFS coverage also omits communal establishments, except NHS housing, students in halls of residence and at boarding schools. Members of the armed forces are only included if they live in private accommodation. Also, workers under 16 are not covered.

## RELEVANCE

### **Key Definitions**

The definitions of the three economic activity groups - employed, unemployed and economically inactive - which are used in the LFS are the standard International Labour Organisation (ILO) definitions. It should be noted that although the LFS uses ILO definitions, these definitions are not interpreted and applied in exactly the same way in different countries. For example, although 'working age' is a common term, different countries have different statutory school leaving and retirement ages. However, Eurostat collects data from Member States and adjusts them to produce comparable estimates.

## 2 ACCURACY

*The closeness between an estimated result and the (unknown) true value*

The main threats to accuracy are sources of error, namely sampling error and non-sampling error, where non-sampling error includes: coverage error, non-response error, measurement error, processing error and model assumption error.

Many of the sources of non-sampling error are difficult to measure. However, the LFS publishes detailed response rates for all waves of the survey and an overall response rate, including time-series (Tables 4.1 - 4.6). Response rates are also published by Government Office Region (GOR) for each wave during the particular quarter (Table 4.7). The LFS also publishes proxy response rates (Table 4.8), response rates for income questions by National Statistics (NS) socio-economic classification (Table 4.9) and attrition rates (Table 4.10).

Surveys, such as the LFS, provide estimates of population characteristics rather than exact measures. In principle, many random samples could be drawn and each would give different results, due to the fact that each sample would be made up of different people, who would give different answers to the questions asked. The spread of these results is the sampling variability, which generally reduces with increasing sample size. A confidence interval is a range of values, defined by a lower and upper bound, which indicates the variability of an estimate. Statistical methods are used to calculate the sampling variability from which the confidence interval can be determined. For example, with a 95 per cent confidence interval, it is expected that in 95 per cent of the survey samples, the resulting confidence interval will contain the true value that would be obtained by surveying the whole population.

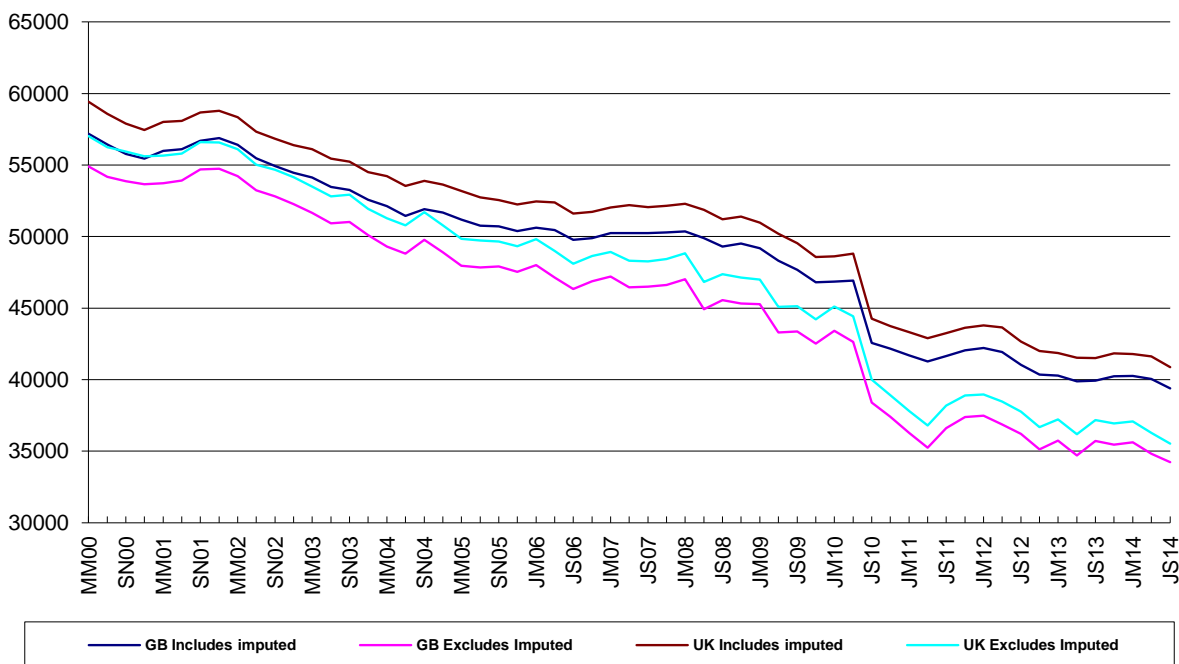
The LFS routinely publishes details of achieved sample sizes in terms of achieved number of household and person interviews (Tables 3.1, 3.2 & 3.3) and sampling variability for estimates of key variables. Sampling variability (95% confidence intervals) can be found in the 'Sampling Variability' section (Table A11) of the [Labour Market Statistics Bulletin](#)

### 3 ACHIEVED SAMPLE

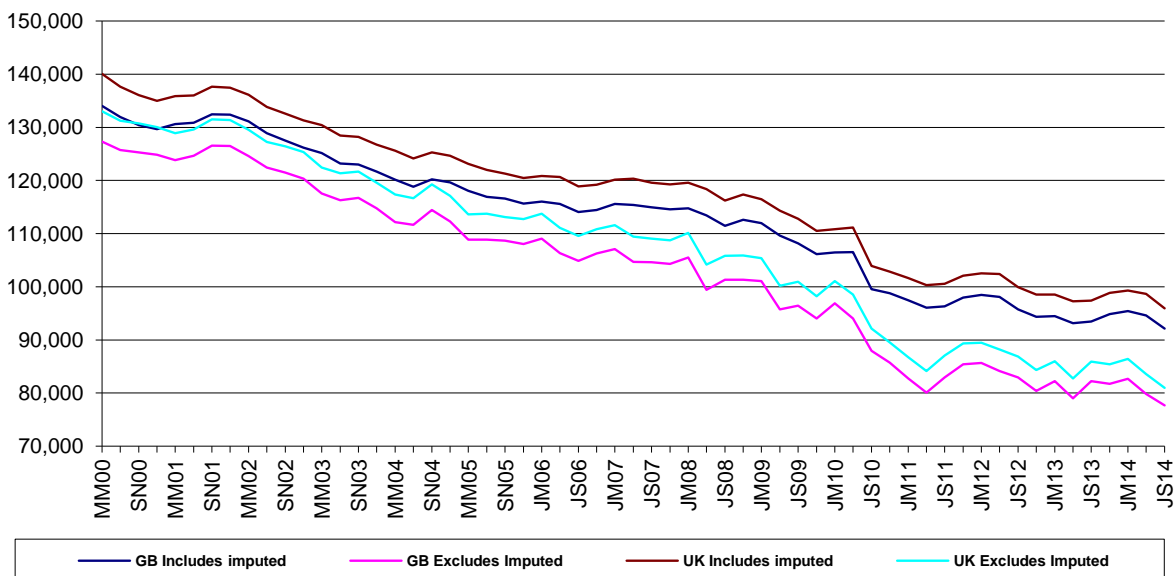
#### 3.1 LFS QUARTERLY SURVEY Achieved sample by type of household, JS14

	GB		UK	
	Includes imputed	Excludes imputed	Includes imputed	Excludes imputed
Private households	39,385	34,227	40,865	35,521
Individuals in private households	92,143	77,698	95,950	80,989
NHS Households	0	0	0	0
Individuals in NHS households	0	0	0	0
<i>Total households</i>	<i>39,385</i>	<i>34,227</i>	<i>40,865</i>	<i>35,521</i>
<i>Total individuals</i>	<i>92,143</i>	<i>77,698</i>	<i>95,950</i>	<i>80,989</i>

#### 3.2 LFS QUARTERLY SURVEY Achieved number of household interviews, GB and UK, MM00 to JS14



#### 3.3 LFS QUARTERLY SURVEY Achieved number of person interviews, GB and UK, MM00 to JS14



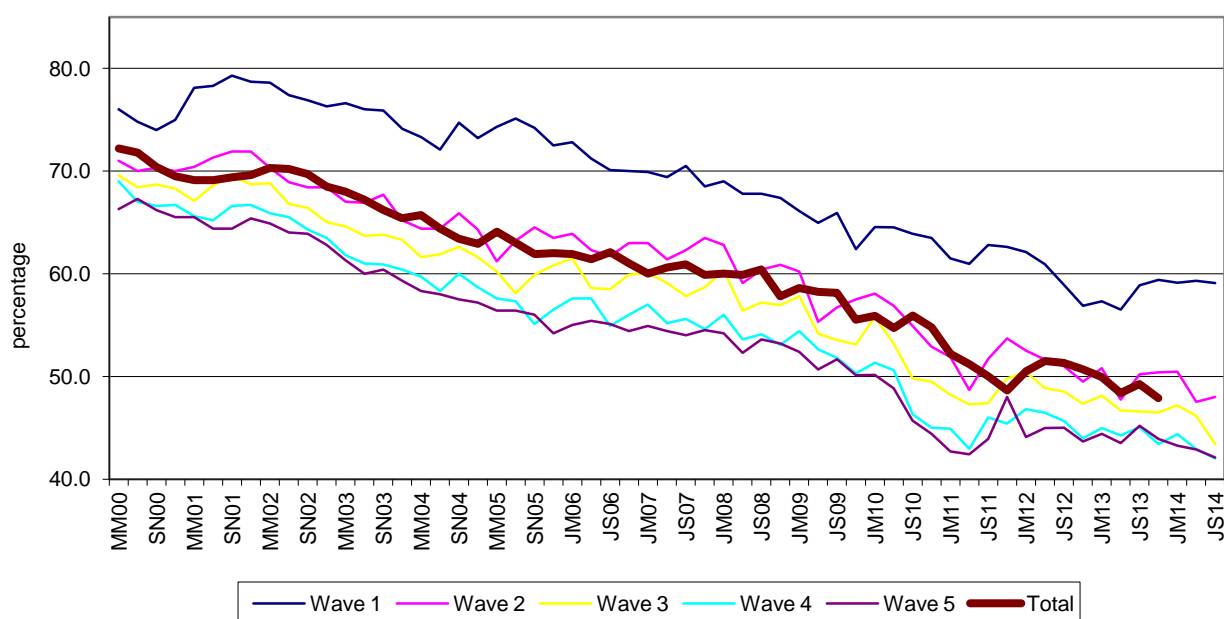
## 4 RESPONSE RATES

### 4.1 LFS QUARTERLY SURVEY Wave specific response rates, GB, excluding imputed households JS14

	Wave 1 in JS14		Wave 2 in JS14		Wave 3 in JS14		Wave 4 in JS14		Wave 5 in JS14		Total	
	#	%	#	%	#	%	#	%	#	%	#	%
<b>Eligible households found at selected units</b>	15,368	100.0	14,273	100.0	14,376	100.0	14,394	100.0	14,306	100.0	72,717	100.0
<b>Responding units</b>												
Total	9,085	59.1	6,845	48.0	6,240	43.4	6,052	42.0	6,026	42.1	34,248	47.1
Full	8,595	55.9	6,191	43.4	5,566	38.7	5,406	37.6	5,297	37.0	31,055	42.7
Partial	490	3.2	654	4.6	674	4.7	646	4.5	729	5.1	3,193	4.4
<b>Non-responding units</b>												
Circumstantial refusal	1,718	11.2	1,552	10.9	1,422	9.9	1,334	9.3	888	6.2	6,914	9.5
Outright refusal	2,224	14.5	3,160	22.1	3,765	26.2	3,914	27.2	4,055	28.3	17,118	23.5
Refusal to HQ	476	3.1	580	4.1	707	4.9	684	4.8	715	5.0	3,162	4.3
Non-contact	1,865	12.1	1,566	11.0	1,390	9.7	1,456	10.1	1,518	10.6	7,795	10.7
<b>Addresses not issued for interviewing</b>												
Refusal to re-interview	n/a	n/a	570	4.0	852	5.9	954	6.6	1,104	7.7	3,480	4.8
Co-operation rate		67.3		56.4		51.4		50.5		51.6		55.7
Contact rate		84.8		84.3		84.5		84.1		83.1		84.2

Note: Excludes households for which response has been imputed. The total response rate is the aggregate response rate for the quarter across all waves, based on all eligible, in-scope households. For a full definition of response categories and the method used to calculate the response rates, see Technical Definitions pg17.

### 4.2 LFS QUARTERLY SURVEY Wave specific response rates, GB, excluding imputed households, MM00 to JS14



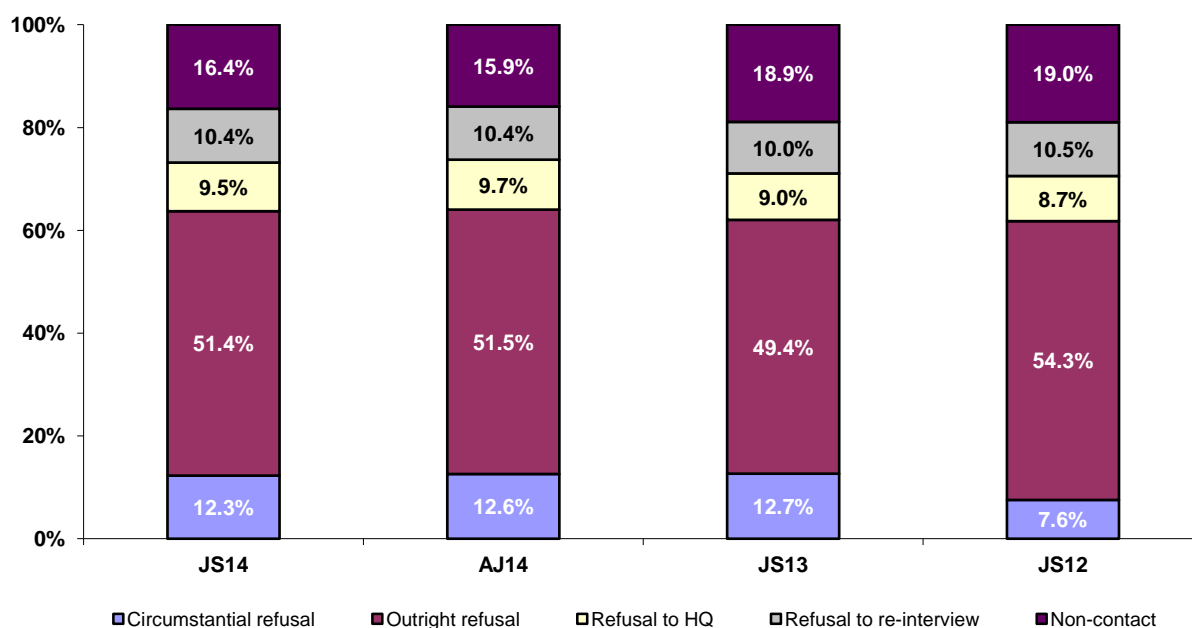
## 4 RESPONSE RATES

### 4.3 LFS QUARTERLY SURVEY Wave specific response rates, GB, JS14, including imputed households

	Wave 1 in JS14		Wave 2 in JS14		Wave 3 in JS14		Wave 4 in JS14		Wave 5 in JS14		Total	
	#	%	#	%	#	%	#	%	#	%	#	%
<b>Eligible households found at selected units</b>	15,368	100.0	14,273	100.0	14,376	100.0	14,394	100.0	14,306	100.0	72,717	100.0
<b>Responding units</b>												
Total	9,085	59.1	8,531	59.8	7,544	52.5	7,306	50.8	6,946	48.6	39,412	54.2
Full	8,595	55.9	6,191	43.4	5,566	38.7	5,406	37.6	5,297	37.0	31,055	42.7
Partial	490	3.2	654	4.6	674	4.7	646	4.5	729	5.1	3,193	4.4
Imputed	-	-	1,686	11.8	1,304	9.1	1,254	8.7	920	6.4	5,164	7.1
<b>Non-responding units</b>												
Circumstantial refusal	1,718	11.2	637	4.5	681	4.7	614	4.3	447	3.1	4,097	5.6
Outright refusal	2,224	14.5	3,160	22.1	3,765	26.2	3,914	27.2	4,055	28.3	17,118	23.5
Refusal to HQ	476	3.1	580	4.1	707	4.9	684	4.8	715	5.0	3,162	4.3
Non-contact	1,865	12.1	795	5.6	827	5.8	922	6.4	1,039	7.3	5,448	7.5
<b>Addresses not issued for interviewing</b>												
Refusal to re-interview	n/a	n/a	570	4.0	852	5.9	954	6.6	1,104	7.7	3,480	4.8
Co-operation rate		67.3		66.1		59.4		58.4		57.1		61.8
Contact rate		84.8		90.0		88.7		88.1		86.7		87.6

The total response rate is the cumulative response rate for the quarter across all waves, based on all eligible, in-scope households. For a full definition of response categories and the method used to calculate the response rates, see Technical Definitions pg 17.

### 4.4 LFS QUARTERLY SURVEY Composition of non-response, Great Britain, including imputed households



Note: For definitions of the types of non-response, see Technical Definitions. Figures are based on the aggregate response for the quarter covering all waves.



## 4 RESPONSE RATES

### 4.5 LFS QUARTERLY SURVEY Wave specific response rates, UK, JS14, excluding imputed households

	Wave 1 in JS14		Wave 2 in JS14		Wave 3 in JS14		Wave 4 in JS14		Wave 5 in JS14		Total	
	#	%	#	%	#	%	#	%	#	%	#	%
<b>Eligible households found at selected units</b>	15,899	100.0	14,869	100.0	14,967	100.0	14,999	100.0	14,911	100.0	75,645	100.0
<b>Responding units</b>												
Total	9,395	59.1	7,123	47.9	6,465	43.2	6,304	42.0	6,255	41.9	35,542	47.0
Full	8,900	56.0	6,465	43.5	5,783	38.6	5,651	37.7	5,523	37.0	32,322	42.7
Partial	495	3.1	658	4.4	682	4.6	653	4.4	732	4.9	3,220	4.3
<b>Non-responding units</b>												
Circumstantial refusal	1,755	11.0	1,571	10.6	1,434	9.6	1,353	9.0	918	6.2	7,031	9.3
Outright refusal	2,334	14.7	3,196	21.5	3,783	25.3	3,930	26.2	4,065	27.3	17,308	22.9
Refusal to HQ	483	3.0	582	3.9	708	4.7	685	4.6	717	4.8	3,175	4.2
Non-contact	1,932	12.2	1,665	11.2	1,501	10.0	1,567	10.4	1,610	10.8	8,275	10.9
<b>Addresses not issued for interviewing</b>												
Refusal to re-interview			732	4.9	1,076	7.2	1,160	7.7	1,346	9.0	4,314	5.7
Co-operation rate		67.3		57.1		52.2		51.4		52.3		56.4
Contact rate		84.8		84.1		84.1		83.7		82.8		83.9

Note: Excludes households for which response has been imputed. The total response rate is the aggregate response rate for the quarter, based on all eligible, in-scope households. See Technical Definitions (pg 17) for a full definition of response categories and the method used to calculate the response rates.

### 4.6 LFS QUARTERLY SURVEY Wave specific response rates, UK, JS14, including imputed households

	Wave 1 in JS14		Wave 2 in JS14		Wave 3 in JS14		Wave 4 in JS14		Wave 5 in JS14		Total	
	#	%	#	%	#	%	#	%	#	%	#	%
<b>Eligible households found at selected units</b>	15,899	100.0	14,869	100.0	14,967	100.0	14,999	100.0	14,911	100.0	75,645	100.0
<b>Responding units</b>												
Total	9,395	59.1	8,854	59.5	7,813	52.2	7,607	50.7	7,223	48.4	40,892	54.1
Full	8,900	56.0	6,465	43.5	5,783	38.6	5,651	37.7	5,523	37.0	32,322	42.7
Partial	495	3.1	658	4.4	682	4.6	653	4.4	732	4.9	3,220	4.3
Imputed	-	-	1,731	11.6	1,348	9.0	1,303	8.7	968	6.5	5,350	7.1
<b>Non-responding units</b>												
Circumstantial refusal	1,755	11.0	651	4.4	691	4.6	625	4.2	464	3.1	4,186	5.5
Outright refusal	2,334	14.7	3,196	21.5	3,783	25.3	3,930	26.2	4,065	27.3	17,308	22.9
Refusal to HQ	483	3.0	582	3.9	708	4.7	685	4.6	717	4.8	3,175	4.2
Non-contact	1,932	12.2	854	5.7	896	6.0	992	6.6	1,096	7.4	5,770	7.6
<b>Addresses not issued for interviewing</b>												
Refusal to re-interview			732	4.9	1,076	7.2	1,160	7.7	1,346	9.0	4,314	5.7
Co-operation rate		67.3		66.7		60.1		59.2		57.9		62.4
Contact rate		84.8		89.8		88.5		87.9		86.6		87.5

Note: The total response rate is the aggregate response rate for the quarter, based on all eligible, in-scope households. For a full definition of response categories and the method used to calculate the response rates, see Technical Definitions (pg 17).

## 4 RESPONSE RATES

### 4.7 LFS QUARTERLY SURVEY Wave specific response rates, JS14, including imputed households, by Region

	Wave 1 in JS14	Wave 2 in JS14	Wave 3 in JS14	Wave 4 in JS14	Wave 5 in JS14	Total
<b>Region</b>						
Tyne & Wear	67.6	62.4	59.0	56.5	59.0	60.9
Rest of North East	60.8	66.5	54.8	53.4	48.6	56.8
Greater Manchester	61.6	63.6	50.4	50.2	49.2	55.1
Merseyside	54.5	50.5	48.3	47.7	43.5	49.0
Rest of North West	64.4	58.7	54.3	52.7	50.0	56.2
South Yorkshire	60.2	65.8	52.1	54.2	49.2	56.3
West Yorkshire	63.4	67.6	58.7	56.9	50.7	59.5
Rest of Yorkshire and Humberside	65.1	62.2	55.4	58.3	52.4	58.9
East Midlands	59.0	58.8	51.6	52.2	52.1	54.8
West Midlands Metropolitan Council	55.6	54.0	49.4	47.0	41.8	49.6
Rest of West Midlands	59.0	58.2	54.3	48.1	48.5	53.7
East of England	60.1	62.6	53.8	51.6	50.3	55.7
Inner London	46.6	58.8	49.3	47.6	45.5	49.5
Outer London	54.3	56.1	48.3	46.7	41.5	49.4
South East	58.7	57.7	54.1	50.1	49.3	54.0
South West	59.2	62.0	51.0	51.7	49.1	54.6
<b>England</b>	<b>58.8</b>	<b>59.9</b>	<b>52.5</b>	<b>50.9</b>	<b>48.6</b>	<b>54.2</b>
<b>Wales</b>	<b>59.6</b>	<b>60.1</b>	<b>52.9</b>	<b>50.3</b>	<b>48.9</b>	<b>54.5</b>
Strathclyde	59.7	59.9	51.4	50.8	46.8	53.8
Rest of Scotland	62.9	58.1	52.3	48.7	49.6	54.4
<b>Scotland</b>	<b>61.6</b>	<b>58.8</b>	<b>51.9</b>	<b>49.6</b>	<b>48.4</b>	<b>54.2</b>
<b>Northern Ireland</b>	<b>58.4</b>	<b>54.2</b>	<b>45.5</b>	<b>49.8</b>	<b>45.8</b>	<b>50.5</b>

Note:

The total response rate is the aggregate response rate for the quarter, based on all eligible, in-scope households. Each wave reported here is an independent sample; for example, the wave 2 response in JS14 is based on response in that quarter plus the previous quarter (AJ14) where it was issued as a wave 1 case.

## 4 RESPONSE RATES

### 4.8 LFS QUARTERLY SURVEY Proxy response, GB, JS14

		All responses	Proxy	%
<b>Age</b>	Total (16+)	72,518	24,686	34.0
	16-17	2,321	2,047	88.2
	18-19	1,991	1,543	77.5
	20+	68,206	21,096	30.9
<b>Sex</b>	Total	72,518	24,686	34.0
	Male	34,578	13,705	39.6
	Female	37,940	10,981	28.9
<b>Ethnicity</b>	Total	72,518	24,686	34.0
	White	64,938	21,389	32.9
	Non-white	7,553	3,292	43.6
	Refused	27	5	18.5
<b>Economic activity (INECAC05)</b>	Total	72,518	24,686	34.0
	Employees	37,410	13,139	35.1
	Self-Employed	6,654	2,346	35.3
	Government schemes	162	50	30.9
	Unpaid family workers	187	39	20.9
	ILO Unemployed	2,759	1,112	40.3
	Inactive	25,346	8,000	31.6

Note: For definition of 'unpaid family workers', see Section 7 (pg 13).

### 4.9 LFS QUARTERLY SURVEY Income Response Rates by NS-SEC, GB, JS14

<b>NS-SEC</b>	Wave 1 in JS14	Wave 5 in JS14	Total
	%	%	%
Higher managerial and professional	86.1	88.0	86.9
Lower managerial and professional	87.0	88.9	87.8
Intermediate occupations	82.6	87.2	84.4
Small employers and own account workers	87.5	93.3	90.3
Lower supervisory and technical	83.9	86.4	84.9
Semi-routine occupations	82.4	86.3	84.0
Routine occupations	80.8	80.8	80.8
<b>Total</b>	<b>84.3</b>	<b>86.9</b>	<b>85.4</b>

Note: The percentages in Table 4.9 are based on all eligible in-scope respondents at wave 1 and all eligible in-scope respondents at wave 5. The total response rate is the aggregate response rate for income for the quarter (wave 1 and wave 5), based on all eligible, in-scope respondents.

## 4 RESPONSE RATES

### 4.10 LFS QUARTERLY SURVEY Summary of attrition by key characteristics, GB, JS14

Column percentages

		Wave 1 in JS13	Wave 5 in JS14	Responds all waves	Non-responder
		Responds	Responds		
<b>Age</b>	<16	21.6	20.3	17.8	22.9
	16-19	4.9	4.3	3.5	5.5
	20-29	11.0	7.8	5.8	14.1
	30-39	13.1	11.6	10.1	14.6
	40-49	15.0	14.5	13.5	15.4
	50-59	14.0	14.9	15.8	13.1
	60-69	13.8	18.1	22.3	9.6
	70+	6.6	8.5	11.2	4.7
<b>Sex</b>	Male	48.7	48.6	48.7	48.8
	Female	51.3	51.4	51.3	51.2
<b>Econ Activity (INECAC05)</b>	Employees	40.1	38.2	36.3	41.9
	Self Emp	7.2	6.9	7.1	7.4
	GovTraining Scheme	0.2	0.1	0.1	0.2
	UPFW(Unpaid Family Workers)	0.2	0.3	0.3	0.1
	ILO Unemp	3.9	3.3	2.8	4.4
	Inactive	27.0	30.9	35.6	23.1
<b>Number of people in household (TOTNUM)</b>	1	9.4	11.0	12.7	7.9
	2	29.7	33.5	37.7	26.0
	3	21.9	19.6	18.1	24.1
	4	24.6	24.0	21.9	25.0
	5	9.2	7.6	6.1	10.8
	6 or more	5.2	4.2	3.5	6.2
<b>Region (GOVTOR)</b>	Tyne & Wear	2.1	2.2	2.1	2.0
	Rest of North East	2.4	2.5	2.1	2.3
	Greater Manchester	4.8	4.4	4.3	5.2
	Merseyside	2.2	2.3	2.1	2.1
	Rest of North West	5.2	5.2	5.2	5.1
	South Yorkshire	2.4	2.6	2.5	2.1
	West Yorkshire	4.0	3.7	3.4	4.3
	Rest of Yorkshire and Humberside	3.1	3.2	3.1	3.0
	East Midlands	8.3	9.3	9.3	7.5
	West Midlands Metropolitan Council	3.7	3.8	3.7	3.6
	Rest of West Midlands	4.6	4.6	4.8	4.7
	East of England	10.6	11.2	11.8	10.1
	Inner London	3.8	3.0	2.4	4.5
	Outer London	7.3	6.0	5.5	8.6
	South East	13.0	12.7	13.4	13.3
	South West	8.3	9.1	9.8	7.5
Wales	5.0	5.3	5.6	4.6	
Strathclyde	3.7	3.4	3.5	4.1	
Rest of Scotland	5.5	5.4	5.2	5.6	

Note: The column, Wave 1 in JS13 Responds, shows the percentage of responders in each key characteristics category at wave 1. The column, Wave 5 in JS14 Responds, shows the percentage of responders in each key characteristics category at wave 5. A significant decline in the values between waves 1 and 5 denotes a higher rate of attrition than where values are consistent between waves 1 and 5 or higher at wave 5.

## 5 TIMELINESS AND PUNCTUALITY

*Timeliness refers to the lapse of time between publication and the period to which the data refer. Punctuality refers to the time lag between the actual and planned dates of publication.*

### 3 Delivery dates of data

#### 3.1 To ONS Labour Market Division (LMD)

Scheduled delivery date for file: October 20, 2014

Achieved delivery date for file: October 20, 2014

Time lag between achieved delivery date and the end of the reference period: 20 days

#### 3.2 Data file for other users

Scheduled availability date for Regional Public & Government normal release user files: November 12, 2014

##### *Recipients*

Bank of England  
Department for Business Innovation and Skills  
Department for Communities and Local Government  
Department for Education and Skills  
Department for Enterprise, Trade and Investment (Northern Ireland)  
Department for Media, Culture and Sport  
Department for Transport  
Department for Work and Pensions  
Department of Finance and Personnel (Northern Ireland)  
Economic and Social Research Council / Data Archive  
Health and Safety Executive  
HM Treasury  
Home Office  
Low Pay Commission  
Office for Standards in Education  
Office of Manpower Economics  
Scottish Government / Scottish Executive  
Small Business Service  
Welsh Government

## 6 ACCESSIBILITY AND CLARITY

*Accessibility is the ease with which users are able to access the data, also reflecting the format(s) in which the data are available and the availability of supporting information. Clarity refers to the quality and sufficiency of the metadata, illustrations and accompanying advice.*

The UK Data Archive at Essex University provides free access to the various LFS datasets and can be contacted via the website: <http://www.data-archive.ac.uk>

A highly disaggregated dataset, which covers a wealth of data for local areas, is available free from NOMIS: <http://www.nomisweb.co.uk>

The Social Surveys Team provide LFS data for a fee, and can be contacted by phone (01633 455678) or email: [socialsurveys@ons.gsi.gov.uk](mailto:socialsurveys@ons.gsi.gov.uk)

Labour Market data, including data from the LFS, are published every month through Statistical Bulletins These include text, tables and charts. Data contained within the Bulletins are available to download, free of charge, from the ONS website. All the main series contained within the releases are available from:

<http://www.ons.gov.uk/ons/taxonomy/index.html?nscl=Labour+Market>

For questions relating to Labour Market statistics, please contact: [labour.market@ons.gsi.gov.uk](mailto:labour.market@ons.gsi.gov.uk)

For general queries about the LFS, please contact: [lhs@ons.gsi.gov.uk](mailto:lhs@ons.gsi.gov.uk)

## 7 COMPARABILITY

*The degree to which data can be compared over time and domain*

### **Background**

The LFS began in 1973 and was carried out every 2 years until 1983. Between 1984 and 1991, data were collected annually and the survey has been running in its present form, with quarterly sampling, since spring 1992. It is carried out under European Union Regulations which specify the way in which the survey should be conducted, the quality of the results that Member States supply to Eurostat and the timetable for supplying results. Although the LFS began as a survey designed to meet international obligations, its primary purpose is now (as stated in section 1, Relevance), "the prompt publication of key aggregate, whole economy, indicators, for the integrated assessment of labour market conditions" (Review of the Labour Force Survey, ONS, 2002).

### **Definitions**

The definitions of the three economic activity groups - employed, unemployed and economically inactive - which are used in the LFS are the standard International Labour Organisation (ILO) definitions.

**Economically active** - those aged 16 or over, who are either employed or unemployed in the survey reference week.

**Employed** - those aged 16 or over, who are regarded as in employment if they did at least one hour of work in the reference week (as an employee, self-employed, unpaid workers in a family business or participants in government-supported training schemes) and those who had a job that they were temporarily away from (for example, if they are on holiday).

**Unemployed** - those aged 16 or over, who are without work, want a job, have actively sought work in the last four weeks and are available to start work in the next two weeks; or are out of work but have found a job and are waiting to start it within the next two weeks.

**Economically inactive** - those who are neither in employment nor unemployed. This group includes, for example, all those who are looking after a home or family, have a long-term illness or disability which prevents them working or are retired.

**Unpaid family workers** - those who are doing unpaid work in a family business.

## 7 COMPARABILITY

### Questionnaire Changes

**New questions for JS14:** New social mobility INTROSMH, SMHCOMP, SMEARNER, SMOCCCT, SMOCCD & SMSOC10 have been introduced

**Amended questions for JS14:** The benefits questions have been reworded slightly : There was inconsistency between the questions as to whether they asked if respondents were receiving or claiming - claiming has been replaced by receiving where applicable.

**Deleted questions for JS14:** No questions have been removed from the JS14 questionnaire.

### Fieldwork Issues

No field work issues for this period.

### Methodology

See page iii for full details of methodological changes; in JM11 a change was implemented to move some wave one interviews into the telephone unit, rather than being face to face interviews as would normally be the case.



## 8 COHERENCE

*The degree to which data that are derived from different sources or methods, but which refer to the same phenomenon, are similar*

### **Data Sources**

The LFS is one of a number of sources of data about the labour market. Some sources provide data which overlap with LFS data on employment, unemployment and earnings. ONS has published guidance about the strengths and limitations of each source in relation to these topics and has indicated which source is the most appropriate for different purposes. Details can be found in the Labour Market Guide, which can be accessed from the website:

<http://www.ons.gov.uk/ons/taxonomy/index.html?nscl=Labour+Market>

### **Employment, Unemployment and Economic Inactivity**

The LFS is the source recommended by ONS for certain employment-related statistics (e.g. estimates of the number of people in employment or unemployed). The LFS is also a unique source of comprehensive, coherent information about economic inactivity, where it provides information separately about people who want a job and those who do not.

### **Number and Industrial Composition of Jobs**

The workforce jobs (WFJ) series provides estimates of the number of jobs in the UK economy and is the source recommended by ONS for both the number of jobs and the industrial composition of jobs. Workforce jobs consist of the sum of employee jobs, self-employment jobs, jobs in the armed forces and government-supported trainees. Civilian workforce jobs are available by geographical region, gender and broad industry. Total workforce jobs are available by gender and broad industry.

### **Earnings**

For estimates of change in earnings (e.g. pay growth in the economy), a non-LFS source, the Average Weekly Earnings (AWE) (formerly the Average Earnings Index (AEI)) is the most suitable source. It provides industry and whole-economy information, but excludes small employers, the self-employed and government-supported trainees. Pay, commission, bonuses, overtime and pay award arrears are included, but redundancy payments and benefits in kind are excluded. The Annual Survey of Hours and Earnings (ASHE) includes information about the levels, distribution and make-up of earnings and hours worked for employees in different occupations, industries, ages and regions. It should be used when the information required is not available from the AWE (such as for occupational groups, or regional analyses), and is the preferred source of the earnings of full-time employees, and of the average hourly earnings of all employees. The LFS should be used when the information is not available from the AWE or from ASHE, and is the preferred source of data about the earnings of part-time and low-paid

## SUMMARY OF METHODS

The LFS covers private households, including persons who are temporarily absent. The resident population comprises persons who regard the sample address as their main address, and also those who have lived in the dwelling for more than six consecutive months, even if they do not regard this as their principal dwelling. Persons absent for more than six months are not regarded as members of the resident population. A private household comprises one or more persons whose main residence is the same dwelling and/or who share at least one meal per day. Students living in halls of residence and pupils at boarding school are sampled via the private households of their parents. In Great Britain, an additional sample is drawn from persons living in National Health Service accommodation.

The year is divided into quarters of 13 weeks. Prior to January 2006, these were seasonal quarters: winter (December to February), spring (March to May), summer (June to August) and autumn (September to November). From January 2006, the LFS has been conducted on the basis of calendar quarters: Q1 - January to March, Q2 - April to June, Q3 - July to September and Q4 - October to December.

For most of Great Britain, the survey base is the Royal Mail's PAF (Postcode Address File), a database of all addresses receiving mail. The list is limited to addresses receiving fewer than 25 items of post per day, so as to exclude businesses. Because of the very low population density in the far north of Scotland (north of the Caledonian Canal), telephone directories are used as sampling frames, and interviews are carried out by telephone because face-to-face interviews would be too expensive. In Northern Ireland POINTER, which is the government's central register of domestic properties, is used.

In Great Britain, a systematic sample is drawn each quarter from the three sampling bases, yielding 16,640 PAF addresses, 75 telephone numbers for the north of Scotland and 36 units of National Health Service housing. As the PAF is broken down geographically, the systematic sampling ensures that the sample is representative at regional level. In Northern Ireland, a simple random sample is drawn, each quarter, from each of three strata, giving 650 addresses in all.

A rotation system comprising five waves is used. Respondents are interviewed five times at 13-week intervals and one-fifth of the sample is replaced each quarter. Interviews are carried out on a face-to-face (CAPI) or telephone (CATI) basis with the help of portable computers for the interviews in the first wave. In the far north of Scotland (north of the Caledonian Canal) and for interviews in the second to fifth waves, wherever possible, interviews are carried out by telephone.

## TECHNICAL DEFINITIONS

### Imputation

If a household (or someone within a household) is unavailable for interview, but was interviewed in the previous wave, responses from the previous wave are rolled forward. This is referred to as 'imputation'. Imputation is carried out to minimise non-response bias in estimates, while simultaneously improving precision by boosting the sample size. The rationale is that most LFS variables do not change from one quarter to another for most people. Responses are rolled forward for one wave only. Data are not rolled forward after a second consecutive non-response. Tables and charts (at person or household level) containing responses which have been rolled forward from the previous wave are denoted by the term 'including imputed'. Tables and charts which do not contain responses which have been rolled forward from the previous wave are denoted by the term 'excluding imputed'.

### Method of Calculating Sampling Variability

The sampling variability is the spread of results which would be obtained if different samples were drawn. A confidence interval is a range of values, defined by a lower and upper bound, which indicates the variability of an estimate. Statistical methods are used to calculate the sampling variability from which the confidence interval can be determined. For example, with a 95 per cent confidence interval, it is expected that in 95 per cent of the survey samples, the resulting confidence interval will contain the true value that would be obtained by surveying the whole population.

### Method of Calculating Response Rates

The response rate indicates how many interviews were achieved as a proportion of those eligible for the survey. The formula used is as follows:

$$RR = (FR + PR)/(FR + PR + OR + CR + RHQ + NC + RRI^*)$$

where RR = response rate, FR = full response, PR = partial response, OR = outright refusal, CR = circumstantial refusal, RHQ = refusal to HQ, NC = non contact, RRI = refusal to re-interview, \*applies to waves 2 to 5 only.

### Definitions of Response Outcome Categories

A **full response** denotes a household in which each household member has answered all applicable questions.

A **partial response** denotes a household in which questions were not completed because someone refused to be interviewed, refused part way through the questionnaire or refused to let someone else answer on his or her behalf. However, at least one question block must have been completed. If only part information has been collected for a one-person household, it is coded as a refusal or non-contact.

An **outright refusal** is a household which refuses to respond to the survey and the interviewer feels that there is no chance of an interview at the current or in any future wave.

A **circumstantial refusal** is a household where the respondent refuses to respond because of a temporary circumstance (e.g. going on holiday, too busy during the field period). A circumstantial refusal enables an interviewer to call back at the next wave.

A **refusal to HQ** is a household which contacts headquarters to refuse to participate in the survey in response to the advance letter.

A **non-contact** arises when an address is occupied, but where it has not been possible to contact any member of the household in the field period.

A **refusal to re-interview** is a household which takes part in the survey (at one or more of waves one to four) but which, when asked to take part in the next wave (waves two to five), refuses.

## TECHNICAL DEFINITIONS

### **Method of Calculating Income Response Rates**

The income question is asked at wave 1 and wave 5 only. Individuals aged 16-69 who are in employment in the reference week, form the sub-set of respondents who are eligible for these questions. The percentage response rates for the income questions are based on all eligible, in-scope respondents at wave 1 and all eligible, in-scope respondents at wave 5. The total response rate is the aggregate response rate for income for the quarter (wave 1 and wave 5), based on all eligible, in-scope respondents.

### **NS-SEC**

NS-SEC is the National Statistics Socio-Economic Classification, which replaces previous classifications which were based on social class and social and economic group.

### **Proxy Response**

The LFS has to complete fieldwork to a tight timetable and interview as many of the sampled households as possible, which leaves limited time for recalls. LFS interviewers try to interview every adult (aged 16+) in each sampled household. However, when a household member is unavailable for interview, interviewers accept information by proxy from another responsible adult in the household. The proxy respondents are normally people living with a partner on behalf of their partner, and parents on behalf of their adult offspring who live with them.

### **Attrition**

Attrition is the term applied to respondents who begin the survey but subsequently drop out. It has been known for some time that these respondents tend to have different characteristics to those who remain in all waves of the survey, which can, therefore, result in attrition bias. For example, if respondents in a particular age band have a higher tendency to drop out (attrition rate) than respondents in other age bands, then they will be under-represented in subsequent waves of the survey and in estimates.

## WEBSITE REFERENCES

Labour Force Survey User Guides	<a href="http://www.ons.gov.uk/ons/guide-method/method-quality/specific/labour-market/labour-market-statistics/index.html">http://www.ons.gov.uk/ons/guide-method/method-quality/specific/labour-market/labour-market-statistics/index.html</a>
Labour Market Statistics Statistical Bulletin	<a href="http://www.ons.gov.uk/ons/taxonomy/index.html?scl=Labour+Market#tab-sum-pub">http://www.ons.gov.uk/ons/taxonomy/index.html?scl=Labour+Market#tab-sum-pub</a>
Labour Force Survey Summary Quality Report	<a href="http://www.ons.gov.uk/ons/guide-method/method-quality/quality/quality-information/social-statistics/quality-and-methodology-information-for-the-labour-force-survey--lfs-.pdf">http://www.ons.gov.uk/ons/guide-method/method-quality/quality/quality-information/social-statistics/quality-and-methodology-information-for-the-labour-force-survey--lfs-.pdf</a>
Methodology for the Calculation of Sampling Variability in the Labour Force Survey	<a href="http://www.ons.gov.uk/ons/guide-method/method-quality/specific/labour-market/articles-and-reports/the-calculation-of-sampling-variability-for-the-labour-force-survey.pdf">http://www.ons.gov.uk/ons/guide-method/method-quality/specific/labour-market/articles-and-reports/the-calculation-of-sampling-variability-for-the-labour-force-survey.pdf</a>
NOMIS	<a href="http://www.nomisweb.co.uk">www.nomisweb.co.uk</a>
Summary Quality Report for Labour Market Data Releases	<a href="http://www.ons.gov.uk/ons/guide-method/method-quality/quality/quality-information/business-statistics/new-component.pdf">http://www.ons.gov.uk/ons/guide-method/method-quality/quality/quality-information/business-statistics/new-component.pdf</a>
UK Data Archive, University of Essex	<a href="http://www.data-archive.ac.uk">http://www.data-archive.ac.uk</a>

# Performance and Quality Monitoring Report

October to December 2014

Labour  
Force  
Survey

# Table of Contents

<b>Executive Summary</b>	ii
<b>Summary of Quality</b>	
<b>1 Relevance</b>	<b>1</b>
<b>2 Accuracy</b>	<b>3</b>
<b>3 Achieved Sample</b>	<b>4</b>
<b>4 Response Rates</b>	<b>5</b>
<b>5 Timeliness and punctuality</b>	<b>11</b>
<b>6 Accessibility and clarity</b>	<b>12</b>
<b>7 Comparability</b>	<b>13</b>
<b>8 Coherence</b>	<b>15</b>
<b>Summary of Methods</b>	<b>16</b>
<b>Technical Definitions</b>	<b>17</b>
<b>Website References</b>	<b>19</b>
<b>List of Tables/Figures</b>	
3.1 Achieved sample by type of household, GB & UK, OD14	4
3.2 Achieved number of household interviews, GB and UK, MM00 to OD14	4
3.3 Achieved number of person interviews, GB and UK, MM00 to OD14	4
4.1 Wave specific response rates, GB, OD14, excluding imputed households	5
4.2 Wave specific response rates, GB, excluding imputed households, MM00 to OD14	5
4.3 Wave specific response rates, GB, OD14, including imputed households	6
4.4 Composition of non-response, GB, OD14, including imputed households	6
4.5 Wave specific response rates, UK, OD14, excluding imputed households	7
4.6 Wave specific response rates, UK, OD14, including imputed households	7
4.7 Wave specific response rates, OD14, including imputed, by Region	8
4.8 Proxy response, GB, OD14	9
4.9 Income response rates by NS-SEC, GB, OD14	9
4.10 Summary of attrition by key characteristics, GB, OD14	10

Note: In previous versions of this document a table detailing sampling variability (previously Table 2.4) was included. Sampling variability (95% confidence intervals) can be found in the Sampling Variability' section (Table A11) of the [Labour Market Statistics Bulletin](#)

# Executive Summary

## October to December 2014

**Note:** Due to the move from processing the LFS on a seasonal quarter basis to processing on a calendar quarter basis from January 2006, all time series data have a break in series which corresponds to this change.

### Summary of achieved sample size

- The achieved sample size for the UK LFS during October to December (OD14) was 95,704 individuals in 40,711 households . Please note: that there were no NHS households in this period.
- Compared to the previous quarter (JS14) this represents a decrease of 0.38% in household interviews, and a decrease of 0.26% in achieved person interviews.

### Summary of response rates

[Please note that historical reports can be accessed on the ONS web site.](#)

In OD14 key response rates were as follows:

- The total response rate for GB excluding imputed cases (Table 4.1, page 5) was 47.6%. This is up 0.5 percentage points on the previous quarter.
- The response rate excluding imputed cases (Fig 4.2, page 5) was 58.9% in wave 1 and 42.7% in wave 5. This compares with 59.1% and 42.1% respectively in the previous quarter.
- The total response rate for GB including imputed cases (Table 4.3, page 6) was 53.9%, down 0.3 percentage points on the previous quarter.
- Of non-response in OD14 (Fig 4.4, page 6), Non-Contacts comprised 15.7% (down 0.6 percentage points on the previous quarter). Circumstantial Refusals were 12.4%, (up 0.1 percentage points). Outright Refusals comprised 52.1% (up 0.7 percentage points on the previous quarter) and other refusals comprised the remainder.
- The region with the highest accumulated response rate across the five waves (Table 4.7, page 8) was 'Tyne & Wear' (61.6%). The lowest were 'West Midlands Metropolitan Council' (47.4%) and 'Merseyside' (48.3%).
- The overall proxy response rate (Table 4.8, page 9) is 33.8%. The highest proxy response rates occur in the 16-17 age group (87.1%), in males (38.8%) and in the non-white ethnicity group (42.5%).
- The average income response rate (Table 4.9, page 9) was 86%.
- The data on attrition rates reveal that those who drop out of the survey between waves 1 and 5, tend to be distributed fairly evenly by key characteristics, but are over-represented in the 20 - 29 age bands, in households with 6 or more people, those who were ILO unemployed and amongst those living in Inner or Outer London and Merseyside. (Table 4.10, page 10).

**Note:** Methodological changes in JM11 and JS10 have impacted response rates. From JM11 a proportion of initial interviews have been conducted by the telephone unit rather than face to face as an efficiency measure. Telephone interviews generally have higher levels of non-response. The removal of households with residents aged 75 and older after their initial interview from JS10 also impacts response as these households generally have high response rates. See the 'Questionnaire Changes' section below for more details.



## Executive Summary (Continued)

### Questionnaire Changes

As of April 2010 the state pension age for women changed in a stepwise fashion, going up by one month every two months, until 65 is reached in April 2020. The LFS has changed its definition of 'pension age' from April 2010 to be all those aged 65 and over irrespective of gender.

From JS10, households that only contain respondents aged 75 and older are removed from the sample after their wave one interview. This change was introduced to reduce the cost of the survey and reduce the burden on respondents. Households only containing individuals aged 75 or older are largely economically inactive and therefore the value of interviewing these households is greatly reduced when considering the main aims of the LFS. The wave one interviews from 75 plus households will receive a larger weight to make them representative of the UK population. This change results in around a 10% reduction in the household sample size and a 7% reduction in the individual sample size.

From JS10, the treatment of 'concealed multi-households' on the LFS has also changed. Previously if one sampled address turned out on inspection to be, for example, not one house but six flats, all six flats would be recorded as households and interviews would be attempted with each household. The number of households encountered could be in the hundreds. This was not a practical approach. ONS decided to harmonise the approach to multi-households across all ONS social surveys. From JS10 if a concealed multi-household is recorded only one household will be randomly selected to be interviewed.

Following a pilot run in JS10, from JM11 onwards a proportion of wave 1 cases (around 10-20%) have been interviewed by the Telephone Unit (TU) as opposed to the traditional face-to-face method (FtF). Sampled addresses are matched to telephone numbers in order to do this. Potential concerns associated with this approach are twofold; that response rates will fall as sampled respondents may be more likely to refuse a telephone survey, and that mode effects may be observed in the data collected. This situation will be monitored.

Details of Fieldwork Issues and New, Amended and Deleted questions can be found in Section 7 (page 14).

# SUMMARY OF QUALITY

## 1 RELEVANCE

*The degree to which the statistical product meets user needs for both coverage and content*

### **Primary Purpose**

The primary purpose of the LFS is "the prompt publication of key aggregate, whole economy, indicators, for the integrated assessment of labour market conditions" (Review of the Labour Force Survey, ONS, 2002). The 'labour market' covers all aspects of people's work, including the education and training needed to equip them for work, the jobs themselves, job-search for those out of work, and income from work and benefits.

### **Users and Uses**

Users of LFS data often combine it with related data from other sources to provide an overall view of the state of the labour market. One of the most important users of this sort of assessment is the Bank of England's Monetary Policy Committee, which sets interest rates in order to meet the Government's inflation target.

Other key users of LFS data are HM Treasury and the Department for Work and Pensions, because they are responsible for UK economic and labour market policy. They are interested in a variety of indicators of the state of the labour market, including the number of people in employment, the number of hours worked, and the number of unemployed people (defined according to the International Labour Organisation - ILO). They often analyse these series by age groups, by regions and by gender. Other Government users include the Department for Business, Innovation and Skills (BIS), the Home Office, the Health & Safety Executive, the Scottish Government, and the Welsh Government.

At the international level, LFS data are used by the European Parliament, Council and Commission, the European Central Bank and DG Employment (Directorate-General for Employment, Social Affairs and Equal Opportunities). It is also used by the Organisation for Economic Co-operation and Development (OECD) and the International Labour Organisation (ILO).

Other users include local authorities, the Trades Union Congress (TUC), the Employer's Association, the Confederation of British Industry, the Institute of Employment Studies, the Institute for Public Policy Research, the National Institute of Economic and Social Research, the Policy Studies Institute, the Institute for Fiscal Studies, academic researchers, the media and the general public.

### **Strengths and Limitations**

The strengths of the LFS are that it has the largest coverage of any household survey in the UK and can thus generate statistics for small geographical areas. In addition, the sampling errors are relatively small, as a result of the wave structure and the size of the survey. The survey covers a large range of employment-related variables and non-employment-related variables, allowing cross-linking analyses to be undertaken (e.g. earnings against educational attainment).

One of the limitations of the LFS is that the sample design provides no guarantee of adequate coverage of any industry, as the survey is not industrially stratified. The LFS coverage also omits communal establishments, except NHS housing, students in halls of residence and at boarding schools. Members of the armed forces are only included if they live in private accommodation. Also, workers under 16 are not covered.

## RELEVANCE

### **Key Definitions**

The definitions of the three economic activity groups - employed, unemployed and economically inactive - which are used in the LFS are the standard International Labour Organisation (ILO) definitions. It should be noted that although the LFS uses ILO definitions, these definitions are not interpreted and applied in exactly the same way in different countries. For example, although 'working age' is a common term, different countries have different statutory school leaving and retirement ages. However, Eurostat collects data from Member States and adjusts them to produce comparable estimates.

## 2 ACCURACY

*The closeness between an estimated result and the (unknown) true value*

The main threats to accuracy are sources of error, namely sampling error and non-sampling error, where non-sampling error includes: coverage error, non-response error, measurement error, processing error and model assumption error.

Many of the sources of non-sampling error are difficult to measure. However, the LFS publishes detailed response rates for all waves of the survey and an overall response rate, including time-series (Tables 4.1 - 4.6). Response rates are also published by Government Office Region (GOR) for each wave during the particular quarter (Table 4.7). The LFS also publishes proxy response rates (Table 4.8), response rates for income questions by National Statistics (NS) socio-economic classification (Table 4.9) and attrition rates (Table 4.10).

Surveys, such as the LFS, provide estimates of population characteristics rather than exact measures. In principle, many random samples could be drawn and each would give different results, due to the fact that each sample would be made up of different people, who would give different answers to the questions asked. The spread of these results is the sampling variability, which generally reduces with increasing sample size. A confidence interval is a range of values, defined by a lower and upper bound, which indicates the variability of an estimate. Statistical methods are used to calculate the sampling variability from which the confidence interval can be determined. For example, with a 95 per cent confidence interval, it is expected that in 95 per cent of the survey samples, the resulting confidence interval will contain the true value that would be obtained by surveying the whole population.

The LFS routinely publishes details of achieved sample sizes in terms of achieved number of household and person interviews (Tables 3.1, 3.2 & 3.3) and sampling variability for estimates of key variables. Sampling variability (95% confidence intervals) can be found in the 'Sampling Variability' section (Table A11) of the [Labour Market Statistics Bulletin](#)

### 3 ACHIEVED SAMPLE

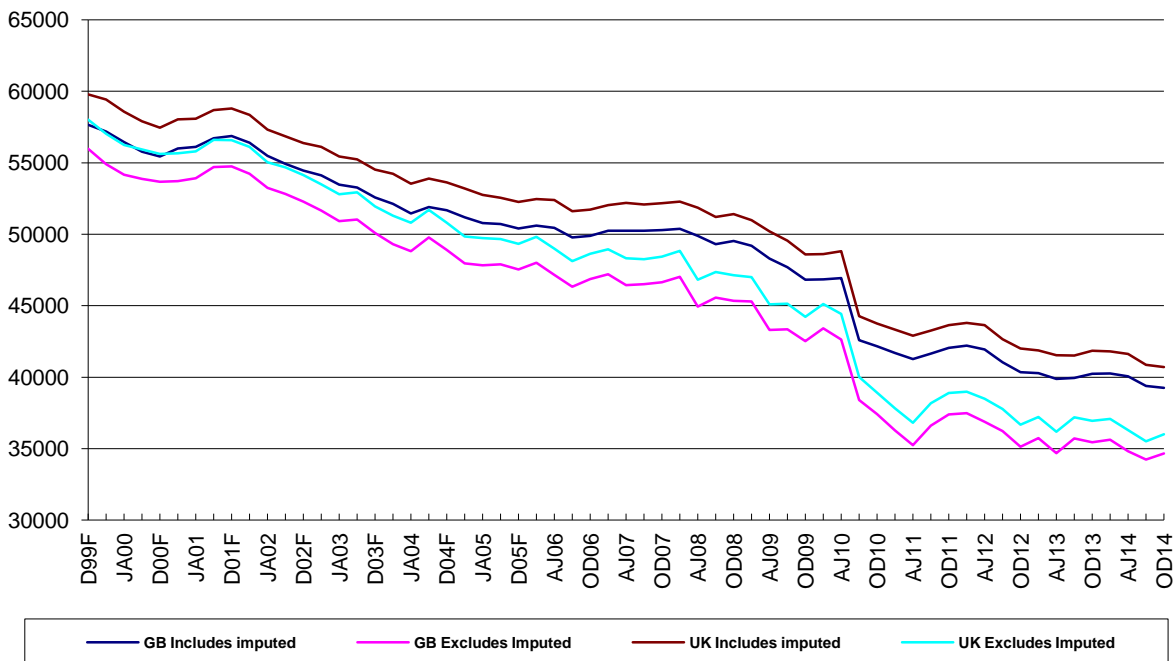
#### 3.1 LFS QUARTERLY SURVEY

Achieved sample by type of household, OD14

	GB		UK	
	Includes imputed	Excludes imputed	Includes imputed	Excludes imputed
Private households	39,241	34,667	40,711	36,016
Individuals in private households	91,953	79,298	95,704	82,717
NHS Households	0	0	0	0
Individuals in NHS households	0	0	0	0
<i>Total households</i>	<i>39,241</i>	<i>34,667</i>	<i>40,711</i>	<i>36,016</i>
<i>Total individuals</i>	<i>91,953</i>	<i>79,298</i>	<i>95,704</i>	<i>82,717</i>

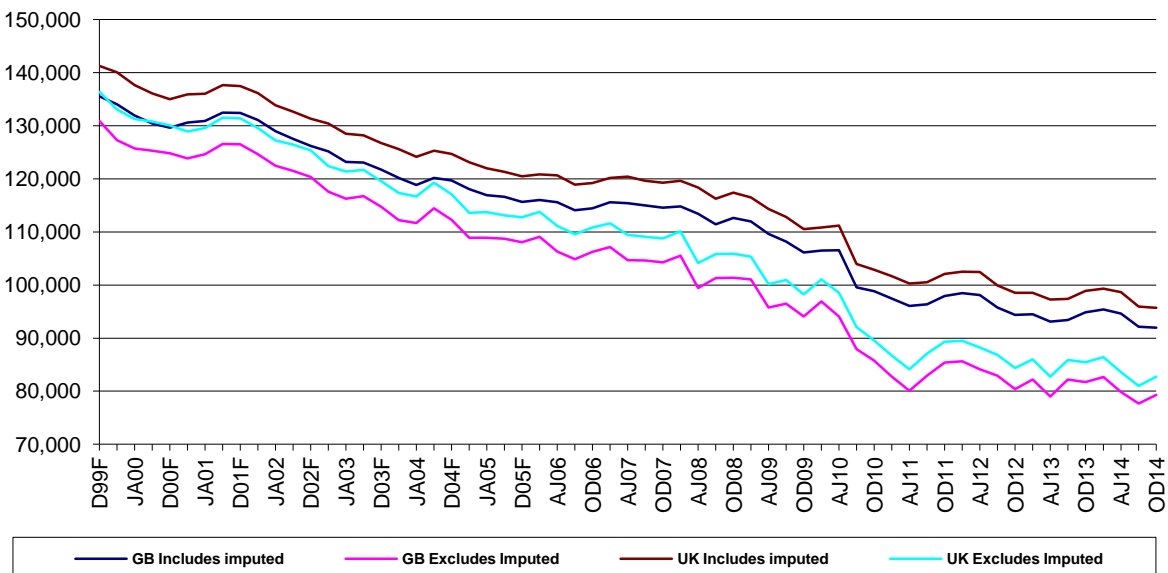
#### 3.2 LFS QUARTERLY SURVEY

Achieved number of household interviews, GB and UK, MM00 to OD14



#### 3.3 LFS QUARTERLY SURVEY

Achieved number of person interviews, GB and UK, MM00 to OD14



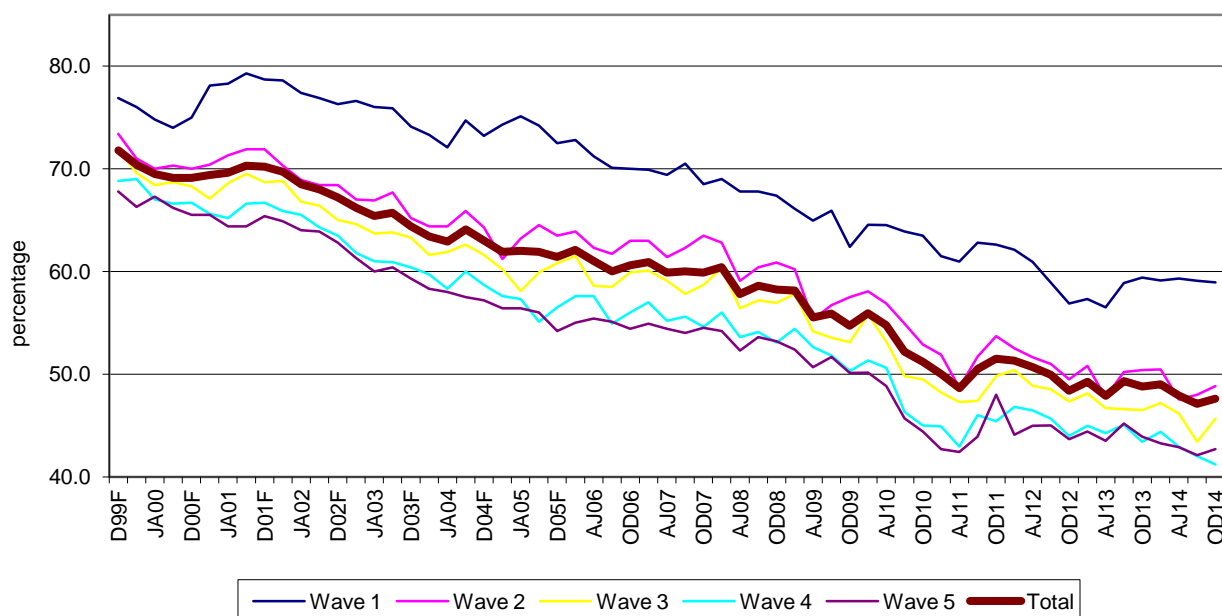
## 4 RESPONSE RATES

### 4.1 LFS QUARTERLY SURVEY Wave specific response rates, GB, excluding imputed households OD14

	Wave 1 in OD14		Wave 2 in OD14		Wave 3 in OD14		Wave 4 in OD14		Wave 5 in OD14		Total	
	#	%	#	%	#	%	#	%	#	%	#	%
<b>Eligible households found at selected units</b>	15,362	100.0	14,335	100.0	14,215	100.0	14,450	100.0	14,451	100.0	72,813	100.0
<b>Responding units</b>												
Total	9,055	58.9	7,002	48.8	6,490	45.7	5,952	41.2	6,172	42.7	34,671	47.6
Full	8,537	55.6	6,256	43.6	5,779	40.7	5,286	36.6	5,412	37.5	31,270	42.9
Partial	518	3.4	746	5.2	711	5.0	666	4.6	760	5.3	3,401	4.7
<b>Non-responding units</b>												
Circumstantial refusal	1,674	10.9	1,444	10.1	1,322	9.3	1,213	8.4	847	5.9	6,500	8.9
Outright refusal	2,302	15.0	3,130	21.8	3,711	26.1	4,144	28.7	4,209	29.1	17,496	24.0
Refusal to HQ	554	3.6	562	3.9	611	4.3	727	5.0	695	4.8	3,149	4.3
Non-contact	1,777	11.6	1,593	11.1	1,299	9.1	1,383	9.6	1,453	10.1	7,505	10.3
<b>Addresses not issued for interviewing</b>												
Refusal to re-interview	n/a	n/a	604	4.2	782	5.5	1,031	7.1	1,075	7.4	3,492	4.8
Co-operation rate		66.7		57.7		53.5		49.5		51.8		56.1
Contact rate		84.8		84.3		85.8		84.3		83.9		84.6

Note: Excludes households for which response has been imputed. The total response rate is the aggregate response rate for the quarter across all waves, based on all eligible, in-scope households. For a full definition of response categories and the method used to calculate the response rates, see Technical Definitions pg17.

### 4.2 LFS QUARTERLY SURVEY Wave specific response rates, GB, excluding imputed households, MM00 to OD14



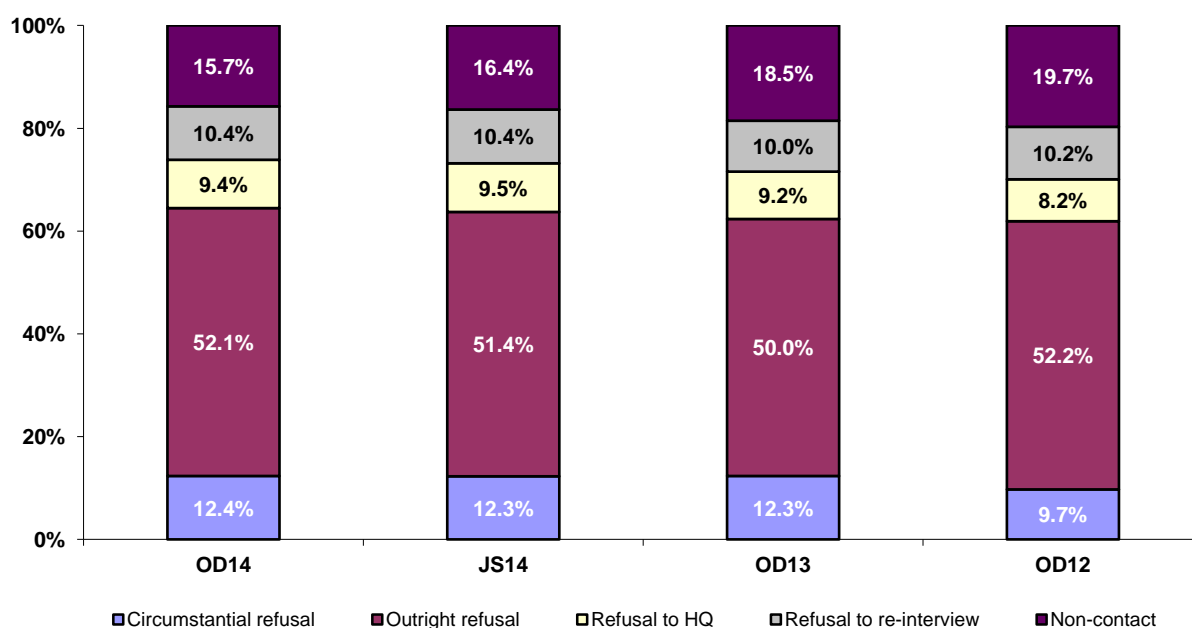
## 4 RESPONSE RATES

### 4.3 LFS QUARTERLY SURVEY Wave specific response rates, GB, OD14, including imputed households

	Wave 1 in OD14		Wave 2 in OD14		Wave 3 in OD14		Wave 4 in OD14		Wave 5 in OD14		Total	
	#	%	#	%	#	%	#	%	#	%	#	%
<b>Eligible households found at selected units</b>	15,362	100.0	14,335	100.0	14,215	100.0	14,450	100.0	14,451	100.0	72,813	100.0
<b>Responding units</b>												
Total	9,055	58.9	8,503	59.3	7,660	53.9	7,060	48.9	6,973	48.3	39,251	53.9
Full	8,537	55.6	6,256	43.6	5,779	40.7	5,286	36.6	5,412	37.5	31,270	42.9
Partial	518	3.4	746	5.2	711	5.0	666	4.6	760	5.3	3,401	4.7
Imputed	-	-	1,501	10.5	1,170	8.2	1,108	7.7	801	5.5	4,580	6.3
<b>Non-responding units</b>												
Circumstantial refusal	1,674	10.9	689	4.8	669	4.7	629	4.4	484	3.3	4,145	5.7
Outright refusal	2,302	15.0	3,130	21.8	3,711	26.1	4,144	28.7	4,209	29.1	17,496	24.0
Refusal to HQ	554	3.6	562	3.9	611	4.3	727	5.0	695	4.8	3,149	4.3
Non-contact	1,777	11.6	847	5.9	782	5.5	859	5.9	1,015	7.0	5,280	7.3
<b>Addresses not issued for interviewing</b>												
Refusal to re-interview	n/a	n/a	604	4.2	782	5.5	1,031	7.1	1,075	7.4	3,492	4.8
Co-operation rate		66.7		66.0		60.5		56.2		56.4		61.3
Contact rate		84.8		89.7		89.6		88.2		87.2		87.8

The total response rate is the cumulative response rate for the quarter across all waves, based on all eligible, in-scope households. For a full definition of response categories and the method used to calculate the response rates, see Technical Definitions pg 17.

### 4.4 LFS QUARTERLY SURVEY Composition of non-response, Great Britain, including imputed households



Note: For definitions of the types of non-response, see Technical Definitions. Figures are based on the aggregate response for the quarter covering all waves.

## 4 RESPONSE RATES

### 4.5 LFS QUARTERLY SURVEY Wave specific response rates, UK, OD14, excluding imputed households

	Wave 1 in OD14		Wave 2 in OD14		Wave 3 in OD14		Wave 4 in OD14		Wave 5 in OD14		Total	
	#	%	#	%	#	%	#	%	#	%	#	%
<b>Eligible households found at selected units</b>	15,923	100.0	14,875	100.0	14,802	100.0	15,026	100.0	15,040	100.0	75,666	100.0
<b>Responding units</b>												
Total	9,402	59.0	7,249	48.7	6,746	45.6	6,189	41.2	6,434	42.8	36,020	47.6
Full	8,877	55.7	6,502	43.7	6,035	40.8	5,518	36.7	5,667	37.7	32,599	43.1
Partial	525	3.3	747	5.0	711	4.8	671	4.5	767	5.1	3,421	4.5
<b>Non-responding units</b>												
Circumstantial refusal	1,707	10.7	1,461	9.8	1,342	9.1	1,229	8.2	861	5.7	6,600	8.7
Outright refusal	2,409	15.1	3,156	21.2	3,723	25.2	4,154	27.6	4,221	28.1	17,663	23.3
Refusal to HQ	559	3.5	565	3.8	612	4.1	727	4.8	696	4.6	3,159	4.2
Non-contact	1,846	11.6	1,688	11.3	1,385	9.4	1,444	9.6	1,523	10.1	7,886	10.4
<b>Addresses not issued for interviewing</b>												
Refusal to re-interview			756	5.1	994	6.7	1,283	8.5	1,305	8.7	4,338	5.7
Co-operation rate		66.8		58.3		54.3		50.3		52.7		56.8
Contact rate		84.9		84.0		85.5		84.2		83.8		84.5

Note: Excludes households for which response has been imputed. The total response rate is the aggregate response rate for the quarter, based on all eligible, in-scope households. See Technical Definitions (pg 17) for a full definition of response categories and the method used to calculate the response rates.

### 4.6 LFS QUARTERLY SURVEY Wave specific response rates, UK, OD14, including imputed households

	Wave 1 in OD14		Wave 2 in OD14		Wave 3 in OD14		Wave 4 in OD14		Wave 5 in OD14		Total	
	#	%	#	%	#	%	#	%	#	%	#	%
<b>Eligible households found at selected units</b>	15,923	100.0	14,875	100.0	14,802	100.0	15,026	100.0	15,040	100.0	75,666	100.0
<b>Responding units</b>												
Total	9,402	59.0	8,787	59.1	7,952	53.7	7,316	48.7	7,264	48.3	40,721	53.8
Full	8,877	55.7	6,502	43.7	6,035	40.8	5,518	36.7	5,667	37.7	32,599	43.1
Partial	525	3.3	747	5.0	711	4.8	671	4.5	767	5.1	3,421	4.5
Imputed	-	-	1,538	10.3	1,206	8.1	1,127	7.5	830	5.5	4,701	6.2
<b>Non-responding units</b>												
Circumstantial refusal	1,707	10.7	704	4.7	681	4.6	640	4.3	494	3.3	4,226	5.6
Outright refusal	2,409	15.1	3,156	21.2	3,723	25.2	4,154	27.6	4,221	28.1	17,663	23.3
Refusal to HQ	559	3.5	565	3.8	612	4.1	727	4.8	696	4.6	3,159	4.2
Non-contact	1,846	11.6	907	6.1	840	5.7	906	6.0	1,060	7.0	5,559	7.3
<b>Addresses not issued for interviewing</b>												
Refusal to re-interview			756	5.1	994	6.7	1,283	8.5	1,305	8.7	4,338	5.7
Co-operation rate		66.8		66.5		61.3		57.0		57.3		61.9
Contact rate		84.9		89.6		89.5		88.1		87.2		87.8

Note: The total response rate is the aggregate response rate for the quarter, based on all eligible, in-scope households. For a full definition of response categories and the method used to calculate the response rates, see Technical Definitions (pg 17).



## 4 RESPONSE RATES

### 4.7 LFS QUARTERLY SURVEY Wave specific response rates, OD14, including imputed households, by Region

	Wave 1 in OD14	Wave 2 in OD14	Wave 3 in OD14	Wave 4 in OD14	Wave 5 in OD14	Total
<b>Region</b>						
Tyne & Wear	69.0	71.0	54.3	59.0	54.4	61.6
Rest of North East	67.5	64.8	59.7	51.6	51.4	59.0
Greater Manchester	62.2	59.6	57.3	47.7	48.3	55.1
Merseyside	58.4	53.7	42.5	42.5	44.3	48.3
Rest of North West	63.4	61.2	52.8	50.6	49.9	55.6
South Yorkshire	55.0	61.3	56.0	47.8	49.4	53.8
West Yorkshire	62.1	66.9	57.2	56.2	51.7	58.8
Rest of Yorkshire and Humberside	66.7	66.8	56.9	52.3	54.9	59.6
East Midlands	62.8	57.5	52.7	48.3	49.0	54.2
West Midlands Metropolitan Council	49.1	51.3	47.1	44.5	44.7	47.4
Rest of West Midlands	57.0	60.1	51.7	49.1	45.9	52.9
East of England	58.6	59.8	57.0	50.8	50.3	55.3
Inner London	48.6	51.5	53.3	45.8	45.2	48.8
Outer London	53.4	55.3	49.8	45.8	44.0	49.7
South East	59.1	59.1	53.3	50.8	48.0	54.1
South West	58.4	59.8	57.8	47.0	49.8	54.6
<b>England</b>	<b>58.8</b>	<b>59.1</b>	<b>53.9</b>	<b>49.1</b>	<b>48.4</b>	<b>53.9</b>
<b>Wales</b>	<b>56.9</b>	<b>61.8</b>	<b>55.1</b>	<b>48.9</b>	<b>48.2</b>	<b>54.3</b>
Strathclyde	60.8	59.4	53.5	46.7	48.7	53.9
Rest of Scotland	62.6	60.3	53.4	46.9	45.2	53.7
<b>Scotland</b>	<b>61.8</b>	<b>59.9</b>	<b>53.4</b>	<b>46.8</b>	<b>46.6</b>	<b>53.8</b>
<b>Northern Ireland</b>	<b>61.9</b>	<b>52.6</b>	<b>49.7</b>	<b>44.4</b>	<b>49.4</b>	<b>51.5</b>

Note:

The total response rate is the aggregate response rate for the quarter, based on all eligible, in-scope households. Each wave reported here is an independent sample; for example, the wave 2 response in OD14 is based on response in that quarter plus the previous quarter (JS14) where it was issued as a wave 1 case.

## 4 RESPONSE RATES

### 4.8 LFS QUARTERLY SURVEY Proxy response, GB, OD14

		All responses	Proxy	%
<b>Age</b>	Total (16+)	72,543	24,546	33.8
	16-17	2,302	2,004	87.1
	18-19	1,958	1,457	74.4
	20+	68,283	21,085	30.9
<b>Sex</b>	Total	72,543	24,546	33.8
	Male	34,762	13,478	38.8
	Female	37,781	11,068	29.3
<b>Ethnicity</b>	Total	72,543	24,546	33.8
	White	64,927	21,314	32.8
	Non-white	7,589	3,225	42.5
	Refused	27	7	25.9
<b>Economic activity (INECAC05)</b>	Total	72,543	24,546	33.8
	Employees	37,696	13,216	35.1
	Self-Employed	6,623	2,326	35.1
	Government schemes	141	40	28.4
	Unpaid family workers	148	32	21.6
	ILO Unemployed	2,464	956	38.8
	Inactive	25,471	7,976	31.3

Note: For definition of 'unpaid family workers', see Section 7 (pg 13).

### 4.9 LFS QUARTERLY SURVEY Income Response Rates by NS-SEC, GB, OD14

	Wave 1 in OD14	Wave 5 in OD14	Total
<b>NS-SEC</b>	%	%	%
Higher managerial and professional	85.1	88.3	86.5
Lower managerial and professional	86.4	89.5	87.8
Intermediate occupations	83.9	86.1	84.8
Small employers and own account workers	82.4	72.7	78.6
Lower supervisory and technical	84.2	85.7	84.8
Semi-routine occupations	84.6	85.9	85.1
Routine occupations	84.1	86.0	84.9
<b>Total</b>	<b>85.0</b>	<b>87.4</b>	<b>86.0</b>

Note: The percentages in Table 4.9 are based on all eligible in-scope respondents at wave 1 and all eligible in-scope respondents at wave 5. The total response rate is the aggregate response rate for income for the quarter (wave 1 and wave 5), based on all eligible, in-scope respondents.

## 4 RESPONSE RATES

### 4.10 LFS QUARTERLY SURVEY Summary of attrition by key characteristics, GB, OD14

Column percentages

		Wave 1 in OD13	Wave 5 in OD14	Responds all waves	Non-responder
		Responds	Responds		
<b>Age</b>	<16	21.6	20.8	18.6	22.5
	16-19	4.6	4.2	3.7	5.1
	20-29	11.6	8.3	6.7	14.9
	30-39	13.2	11.7	10.2	14.8
	40-49	14.9	14.8	14.2	15.1
	50-59	14.2	15.1	15.3	13.3
	60-69	13.2	17.0	20.7	9.4
	70+	6.6	8.2	10.7	4.9
<b>Sex</b>	Male	49.0	49.0	49.2	49.0
	Female	51.0	51.0	50.8	51.0
<b>Econ Activity (INECAC05)</b>	Employees	40.6	39.2	38.1	41.9
	Self Emp	7.5	7.2	6.5	7.8
	GovTraining Scheme	0.2	0.2	0.1	0.2
	UPFW(Unpaid Family Workers)	0.2	0.2	0.2	0.1
	ILO Unemp	3.2	2.7	2.5	3.7
	Inactive	26.8	29.6	33.9	23.8
<b>Number of people in household (TOTNUM)</b>	1	8.8	10.1	11.7	7.4
	2	29.7	33.5	37.2	25.8
	3	21.9	19.7	17.9	24.2
	4	23.7	23.7	22.1	23.6
	5	10.1	8.4	7.1	12.0
	6 or more	5.8	4.6	4.0	6.9
<b>Region (GOVTOR)</b>	Tyne & Wear	2.1	2.1	2.3	2.0
	Rest of North East	2.7	2.6	2.6	2.7
	Greater Manchester	4.5	4.6	4.1	4.5
	Merseyside	2.3	2.1	2.0	2.7
	Rest of North West	5.3	5.4	4.8	5.2
	South Yorkshire	2.4	2.2	2.0	2.6
	West Yorkshire	4.0	4.0	3.9	4.0
	Rest of Yorkshire and Humberside	3.2	3.7	3.3	2.7
	East Midlands	8.3	8.3	8.4	8.3
	West Midlands Metropolitan Council	3.9	3.7	3.7	4.1
	Rest of West Midlands	4.8	5.0	5.2	4.5
	East of England	9.7	10.5	11.0	8.9
	Inner London	4.1	3.6	3.0	4.6
	Outer London	7.5	5.6	5.6	9.4
	South East	13.6	14.2	15.0	12.9
	South West	8.1	9.1	9.4	7.1
Wales	4.7	5.0	5.5	4.4	
Strathclyde	3.7	3.5	3.3	4.0	
Rest of Scotland	5.1	4.8	4.9	5.5	

Note: The column, Wave 1 in OD13 Responds, shows the percentage of responders in each key characteristics category at wave 1. The column, Wave 5 in OD14 Responds, shows the percentage of responders in each key characteristics category at wave 5. A significant decline in the values between waves 1 and 5 denotes a higher rate of attrition than where values are consistent between waves 1 and 5 or higher at wave 5.

## 5 TIMELINESS AND PUNCTUALITY

*Timeliness refers to the lapse of time between publication and the period to which the data refer. Punctuality refers to the time lag between the actual and planned dates of publication.*

### 3 Delivery dates of data

#### 3.1 To ONS Labour Market Division (LMD)

Scheduled delivery date for file: January 16, 2015

Achieved delivery date for file: January 16, 2015

Time lag between achieved delivery date and the end of the reference period: 16 days

#### 3.2 Data file for other users

Scheduled availability date for Regional Public & Government normal release user files: February 18, 2015

*Recipients*

Bank of England  
Department for Business Innovation and Skills  
Department for Communities and Local Government  
Department for Education and Skills  
Department for Enterprise, Trade and Investment (Northern Ireland)  
Department for Media, Culture and Sport  
Department for Transport  
Department for Work and Pensions  
Department of Finance and Personnel (Northern Ireland)  
Economic and Social Research Council / Data Archive  
Health and Safety Executive  
HM Treasury  
Home Office  
Low Pay Commission  
Office for Standards in Education  
Office of Manpower Economics  
Scottish Government / Scottish Executive  
Small Business Service  
Welsh Government

## 6 ACCESSIBILITY AND CLARITY

*Accessibility is the ease with which users are able to access the data, also reflecting the format(s) in which the data are available and the availability of supporting information. Clarity refers to the quality and sufficiency of the metadata, illustrations and accompanying advice.*

The UK Data Archive at Essex University provides free access to the various LFS datasets and can be contacted via the website: <http://www.data-archive.ac.uk>

A highly disaggregated dataset, which covers a wealth of data for local areas, is available free from NOMIS: <http://www.nomisweb.co.uk>

The Social Surveys Team provide LFS data for a fee, and can be contacted by phone (01633 455678) or email: [socialsurveys@ons.gsi.gov.uk](mailto:socialsurveys@ons.gsi.gov.uk)

Labour Market data, including data from the LFS, are published every month through Statistical Bulletins These include text, tables and charts. Data contained within the Bulletins are available to download, free of charge, from the ONS website. All the main series contained within the releases are available from:

<http://www.ons.gov.uk/ons/taxonomy/index.html?nscl=Labour+Market>

For questions relating to Labour Market statistics, please contact: [labour.market@ons.gsi.gov.uk](mailto:labour.market@ons.gsi.gov.uk)

For general queries about the LFS, please contact: [lhs@ons.gsi.gov.uk](mailto:lhs@ons.gsi.gov.uk)

## 7 COMPARABILITY

*The degree to which data can be compared over time and domain*

### **Background**

The LFS began in 1973 and was carried out every 2 years until 1983. Between 1984 and 1991, data were collected annually and the survey has been running in its present form, with quarterly sampling, since spring 1992. It is carried out under European Union Regulations which specify the way in which the survey should be conducted, the quality of the results that Member States supply to Eurostat and the timetable for supplying results. Although the LFS began as a survey designed to meet international obligations, its primary purpose is now (as stated in section 1, Relevance), "the prompt publication of key aggregate, whole economy, indicators, for the integrated assessment of labour market conditions" (Review of the Labour Force Survey, ONS, 2002).

### **Definitions**

The definitions of the three economic activity groups - employed, unemployed and economically inactive - which are used in the LFS are the standard International Labour Organisation (ILO) definitions.

**Economically active** - those aged 16 or over, who are either employed or unemployed in the survey reference week.

**Employed** - those aged 16 or over, who are regarded as in employment if they did at least one hour of work in the reference week (as an employee, self-employed, unpaid workers in a family business or participants in government-supported training schemes) and those who had a job that they were temporarily away from (for example, if they are on holiday).

**Unemployed** - those aged 16 or over, who are without work, want a job, have actively sought work in the last four weeks and are available to start work in the next two weeks; or are out of work but have found a job and are waiting to start it within the next two weeks.

**Economically inactive** - those who are neither in employment nor unemployed. This group includes, for example, all those who are looking after a home or family, have a long-term illness or disability which prevents them working or are retired.

**Unpaid family workers** - those who are doing unpaid work in a family business.

## 7 COMPARABILITY

### **Questionnaire Changes**

**New questions for OD14:** New self employment questions MSELF A1-9, MSELF B, SSELF A1-9 and SSELF B have been introduced.

**Amended questions for OD14:** No questions have been amended for the OD14 questionnaire.

**Deleted questions for OD14:** No questions have been removed from the OD14 questionnaire.

### **Fieldwork Issues**

No field work issues for this period.

### **Methodology**

See page iii for full details of methodological changes; in JM11 a change was implemented to move some wave one interviews into the telephone unit, rather than being face to face interviews as would normally be the case.

## 8 COHERENCE

*The degree to which data that are derived from different sources or methods, but which refer to the same phenomenon, are similar*

### **Data Sources**

The LFS is one of a number of sources of data about the labour market. Some sources provide data which overlap with LFS data on employment, unemployment and earnings. ONS has published guidance about the strengths and limitations of each source in relation to these topics and has indicated which source is the most appropriate for different purposes. Details can be found in the Labour Market Guide, which can be accessed from the website:

<http://www.ons.gov.uk/ons/taxonomy/index.html?nscl=Labour+Market>

### **Employment, Unemployment and Economic Inactivity**

The LFS is the source recommended by ONS for certain employment-related statistics (e.g. estimates of the number of people in employment or unemployed). The LFS is also a unique source of comprehensive, coherent information about economic inactivity, where it provides information separately about people who want a job and those who do not.

### **Number and Industrial Composition of Jobs**

The workforce jobs (WFJ) series provides estimates of the number of jobs in the UK economy and is the source recommended by ONS for both the number of jobs and the industrial composition of jobs. Workforce jobs consist of the sum of employee jobs, self-employment jobs, jobs in the armed forces and government-supported trainees. Civilian workforce jobs are available by geographical region, gender and broad industry. Total workforce jobs are available by gender and broad industry.

### **Earnings**

For estimates of change in earnings (e.g. pay growth in the economy), a non-LFS source, the Average Weekly Earnings (AWE) (formerly the Average Earnings Index (AEI)) is the most suitable source. It provides industry and whole-economy information, but excludes small employers, the self-employed and government-supported trainees. Pay, commission, bonuses, overtime and pay award arrears are included, but redundancy payments and benefits in kind are excluded. The Annual Survey of Hours and Earnings (ASHE) includes information about the levels, distribution and make-up of earnings and hours worked for employees in different occupations, industries, ages and regions. It should be used when the information required is not available from the AWE (such as for occupational groups, or regional analyses), and is the preferred source of the earnings of full-time employees, and of the average hourly earnings of all employees. The LFS should be used when the information is not available from the AWE or from ASHE, and is the preferred source of data about the earnings of part-time and low-paid



## SUMMARY OF METHODS

The LFS covers private households, including persons who are temporarily absent. The resident population comprises persons who regard the sample address as their main address, and also those who have lived in the dwelling for more than six consecutive months, even if they do not regard this as their principal dwelling. Persons absent for more than six months are not regarded as members of the resident population. A private household comprises one or more persons whose main residence is the same dwelling and/or who share at least one meal per day. Students living in halls of residence and pupils at boarding school are sampled via the private households of their parents. In Great Britain, an additional sample is drawn from persons living in National Health Service accommodation.

The year is divided into quarters of 13 weeks. Prior to January 2006, these were seasonal quarters: winter (December to February), spring (March to May), summer (June to August) and autumn (September to November). From January 2006, the LFS has been conducted on the basis of calendar quarters: Q1 - January to March, Q2 - April to June, Q3 - July to September and Q4 - October to December.

For most of Great Britain, the survey base is the Royal Mail's PAF (Postcode Address File), a database of all addresses receiving mail. The list is limited to addresses receiving fewer than 25 items of post per day, so as to exclude businesses. Because of the very low population density in the far north of Scotland (north of the Caledonian Canal), telephone directories are used as sampling frames, and interviews are carried out by telephone because face-to-face interviews would be too expensive. In Northern Ireland POINTER, which is the government's central register of domestic properties, is used.

In Great Britain, a systematic sample is drawn each quarter from the three sampling bases, yielding 16,640 PAF addresses, 75 telephone numbers for the north of Scotland and 36 units of National Health Service housing. As the PAF is broken down geographically, the systematic sampling ensures that the sample is representative at regional level. In Northern Ireland, a simple random sample is drawn, each quarter, from each of three strata, giving 650 addresses in all.

A rotation system comprising five waves is used. Respondents are interviewed five times at 13-week intervals and one-fifth of the sample is replaced each quarter. Interviews are carried out on a face-to-face (CAPI) or telephone (CATI) basis with the help of portable computers for the interviews in the first wave. In the far north of Scotland (north of the Caledonian Canal) and for interviews in the second to fifth waves, wherever possible, interviews are carried out by telephone.

## TECHNICAL DEFINITIONS

### Imputation

If a household (or someone within a household) is unavailable for interview, but was interviewed in the previous wave, responses from the previous wave are rolled forward. This is referred to as 'imputation'. Imputation is carried out to minimise non-response bias in estimates, while simultaneously improving precision by boosting the sample size. The rationale is that most LFS variables do not change from one quarter to another for most people. Responses are rolled forward for one wave only. Data are not rolled forward after a second consecutive non-response. Tables and charts (at person or household level) containing responses which have been rolled forward from the previous wave are denoted by the term 'including imputed'. Tables and charts which do not contain responses which have been rolled forward from the previous wave are denoted by the term 'excluding imputed'.

### Method of Calculating Sampling Variability

The sampling variability is the spread of results which would be obtained if different samples were drawn. A confidence interval is a range of values, defined by a lower and upper bound, which indicates the variability of an estimate. Statistical methods are used to calculate the sampling variability from which the confidence interval can be determined. For example, with a 95 per cent confidence interval, it is expected that in 95 per cent of the survey samples, the resulting confidence interval will contain the true value that would be obtained by surveying the whole population.

### Method of Calculating Response Rates

The response rate indicates how many interviews were achieved as a proportion of those eligible for the survey. The formula used is as follows:

$$RR = (FR + PR)/(FR + PR + OR + CR + RHQ + NC + RRI^*)$$

where RR = response rate, FR = full response, PR = partial response, OR = outright refusal, CR = circumstantial refusal, RHQ = refusal to HQ, NC = non contact, RRI = refusal to re-interview, \*applies to waves 2 to 5 only.

### Definitions of Response Outcome Categories

A **full response** denotes a household in which each household member has answered all applicable questions.

A **partial response** denotes a household in which questions were not completed because someone refused to be interviewed, refused part way through the questionnaire or refused to let someone else answer on his or her behalf. However, at least one question block must have been completed. If only part information has been collected for a one-person household, it is coded as a refusal or non-contact.

An **outright refusal** is a household which refuses to respond to the survey and the interviewer feels that there is no chance of an interview at the current or in any future wave.

A **circumstantial refusal** is a household where the respondent refuses to respond because of a temporary circumstance (e.g. going on holiday, too busy during the field period). A circumstantial refusal enables an interviewer to call back at the next wave.

A **refusal to HQ** is a household which contacts headquarters to refuse to participate in the survey in response to the advance letter.

A **non-contact** arises when an address is occupied, but where it has not been possible to contact any member of the household in the field period.

A **refusal to re-interview** is a household which takes part in the survey (at one or more of waves one to four) but which, when asked to take part in the next wave (waves two to five), refuses.

## TECHNICAL DEFINITIONS

### **Method of Calculating Income Response Rates**

The income question is asked at wave 1 and wave 5 only. Individuals aged 16-69 who are in employment in the reference week, form the sub-set of respondents who are eligible for these questions. The percentage response rates for the income questions are based on all eligible, in-scope respondents at wave 1 and all eligible, in-scope respondents at wave 5. The total response rate is the aggregate response rate for income for the quarter (wave 1 and wave 5), based on all eligible, in-scope respondents.

### **NS-SEC**

NS-SEC is the National Statistics Socio-Economic Classification, which replaces previous classifications which were based on social class and social and economic group.

### **Proxy Response**

The LFS has to complete fieldwork to a tight timetable and interview as many of the sampled households as possible, which leaves limited time for recalls. LFS interviewers try to interview every adult (aged 16+) in each sampled household. However, when a household member is unavailable for interview, interviewers accept information by proxy from another responsible adult in the household. The proxy respondents are normally people living with a partner on behalf of their partner, and parents on behalf of their adult offspring who live with them.

### **Attrition**

Attrition is the term applied to respondents who begin the survey but subsequently drop out. It has been known for some time that these respondents tend to have different characteristics to those who remain in all waves of the survey, which can, therefore, result in attrition bias. For example, if respondents in a particular age band have a higher tendency to drop out (attrition rate) than respondents in other age bands, then they will be under-represented in subsequent waves of the survey and in estimates.

## WEBSITE REFERENCES

Labour Force Survey User Guides	<a href="http://www.ons.gov.uk/ons/guide-method/method-quality/specific/labour-market/labour-market-statistics/index.html">http://www.ons.gov.uk/ons/guide-method/method-quality/specific/labour-market/labour-market-statistics/index.html</a>
Labour Market Statistics Statistical Bulletin	<a href="http://www.ons.gov.uk/ons/taxonomy/index.html?nsc1=Labour+Market#tab-sum-pub">http://www.ons.gov.uk/ons/taxonomy/index.html?nsc1=Labour+Market#tab-sum-pub</a>
Labour Force Survey Summary Quality Report	<a href="http://www.ons.gov.uk/ons/guide-method/method-quality/quality/quality-information/social-statistics/quality-and-methodology-information-for-the-labour-force-survey--lfs-.pdf">http://www.ons.gov.uk/ons/guide-method/method-quality/quality/quality-information/social-statistics/quality-and-methodology-information-for-the-labour-force-survey--lfs-.pdf</a>
Methodology for the Calculation of Sampling Variability in the Labour Force Survey	<a href="http://www.ons.gov.uk/ons/guide-method/method-quality/specific/labour-market/articles-and-reports/the-calculation-of-sampling-variability-for-the-labour-force-survey.pdf">http://www.ons.gov.uk/ons/guide-method/method-quality/specific/labour-market/articles-and-reports/the-calculation-of-sampling-variability-for-the-labour-force-survey.pdf</a>
NOMIS	<a href="http://www.nomisweb.co.uk">www.nomisweb.co.uk</a>
Summary Quality Report for Labour Market Data Releases	<a href="http://www.ons.gov.uk/ons/guide-method/method-quality/quality/quality-information/business-statistics/new-component.pdf">http://www.ons.gov.uk/ons/guide-method/method-quality/quality/quality-information/business-statistics/new-component.pdf</a>
UK Data Archive, University of Essex	<a href="http://www.data-archive.ac.uk">http://www.data-archive.ac.uk</a>