

## Views of home, neighbourhood and moving - overview

### 1. Home

How satisfied or dissatisfied they are with the home and to rate the following aspects: External design, internal design, decoration, kitchen facilities, bathroom facilities, storage space, number of rooms, room size, garden. *(nb list of topics changed between 02/03 and 03/04)*

The effectiveness of:  
Hot water system, heating, insulation and draught proofing, security measures. *(nb list of topics changed between 02/03 and 03/04)*

Whether they have smoke detectors, if yes, what type.

Whether it is easy or difficult to meet running costs, how they pay for fuel, and the adequacy of heating

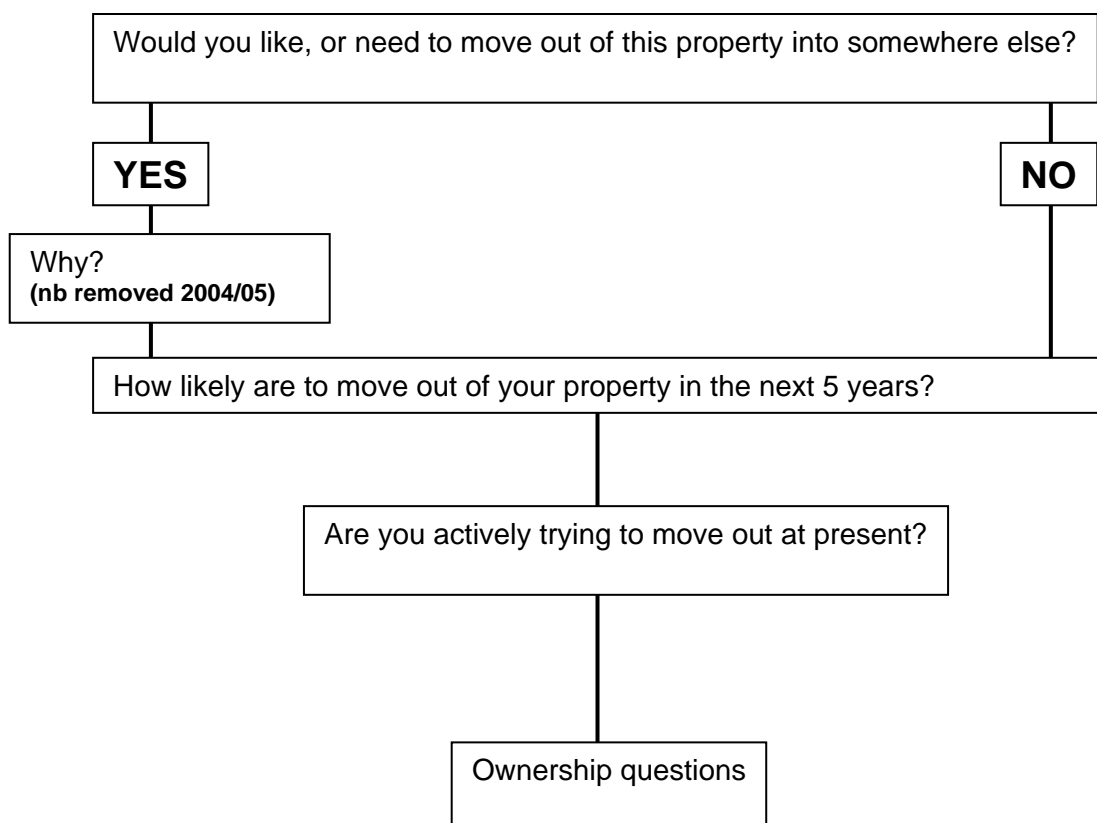
What is most important to them when thinking about there home. *(nb Only asked in 02/03)*

Their view of the state of repair of their home and if they are satisfied with this.

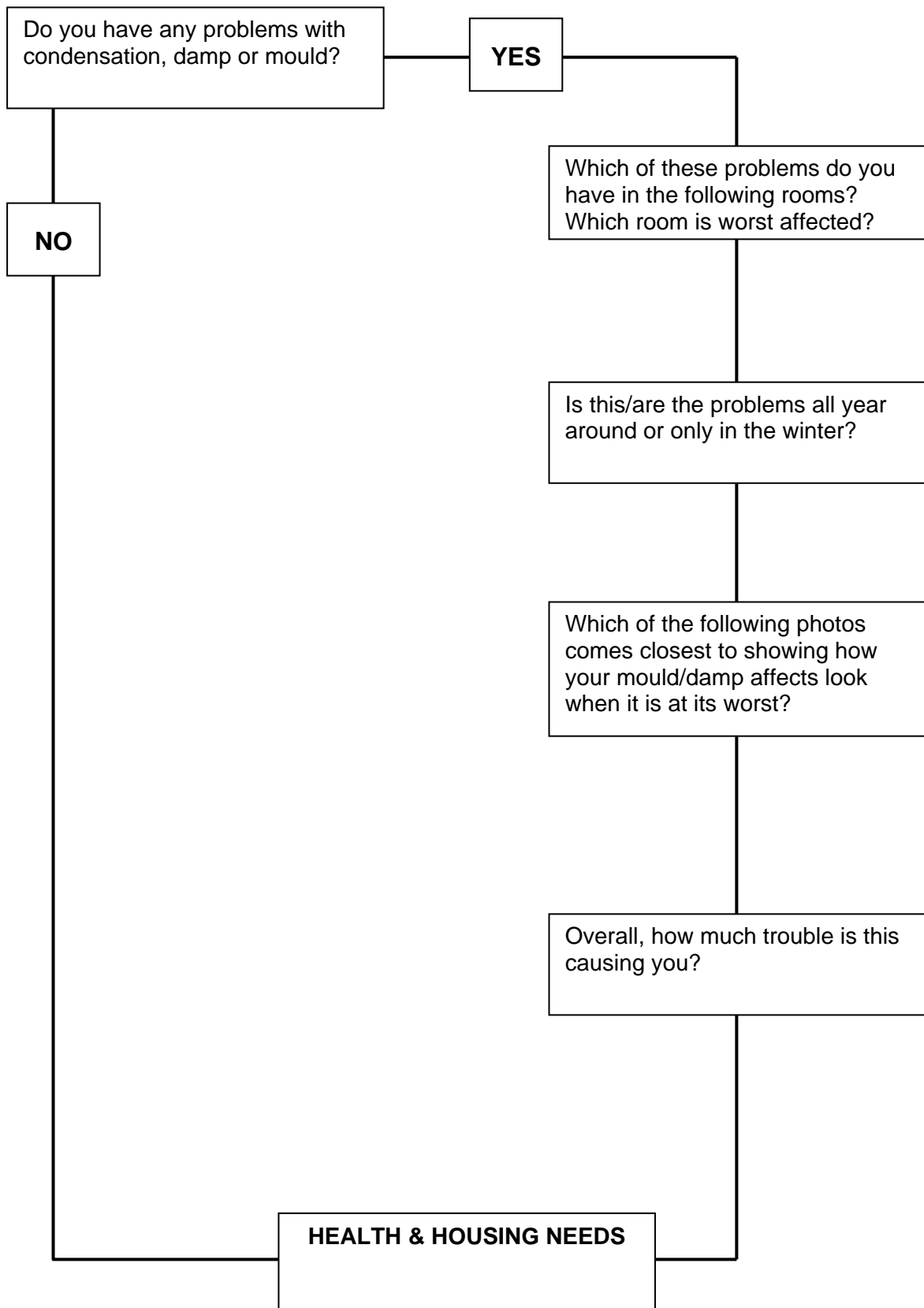
### 2. Neighbourhood

What they think of their neighbourhood in general, and if they have had problems with: Noise, crime, vandalism, state of open spaces, dog mess, graffiti, litter, traffic, parking, neighbours, children, pollution, safety,.  
Distances to the nearest heath facility, pub, shops, post office, school, open space, sports facility and bus stop. *(nb Only asked in 02/03)*

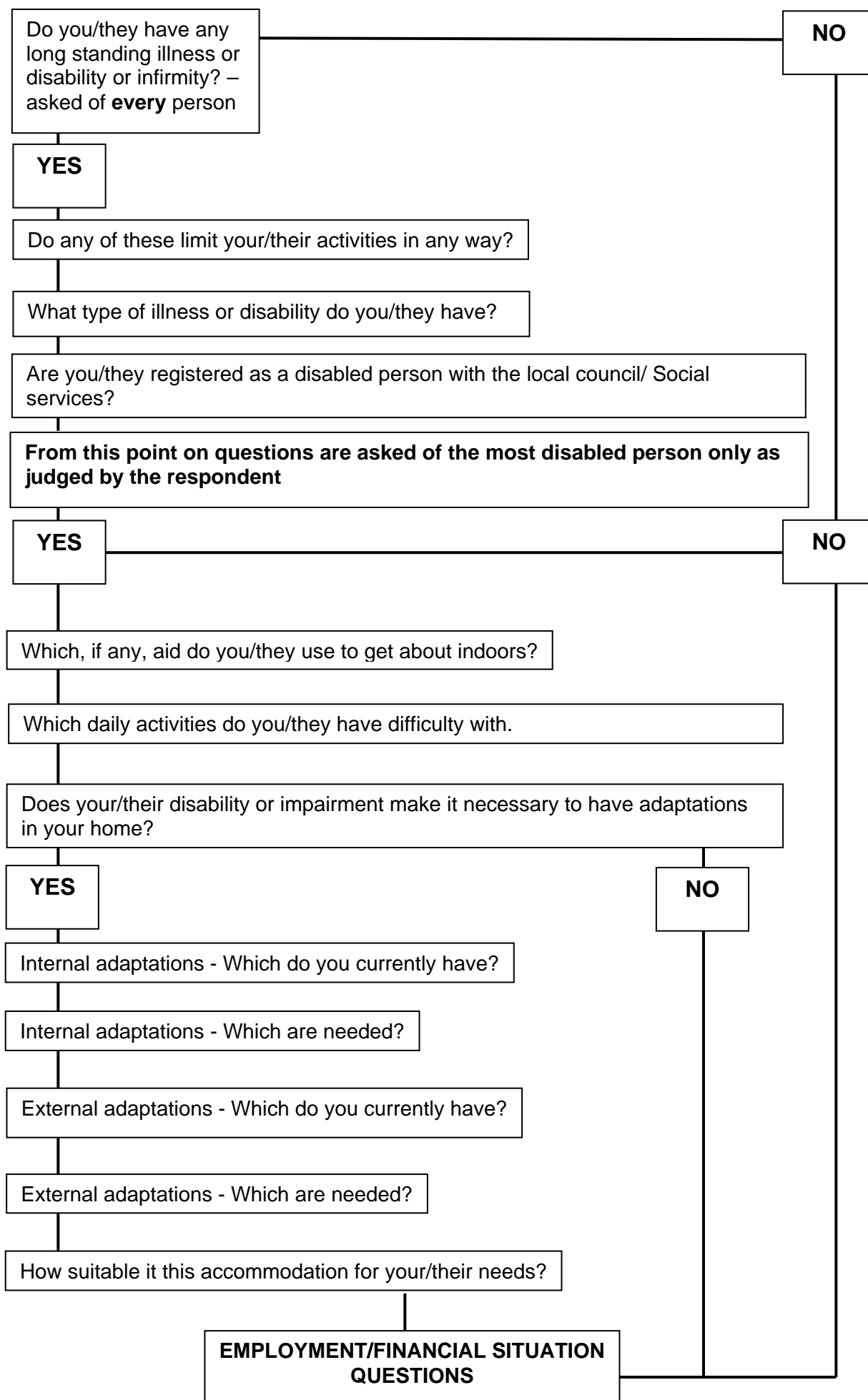
### 3. Moving



## Condensation and Damp overview



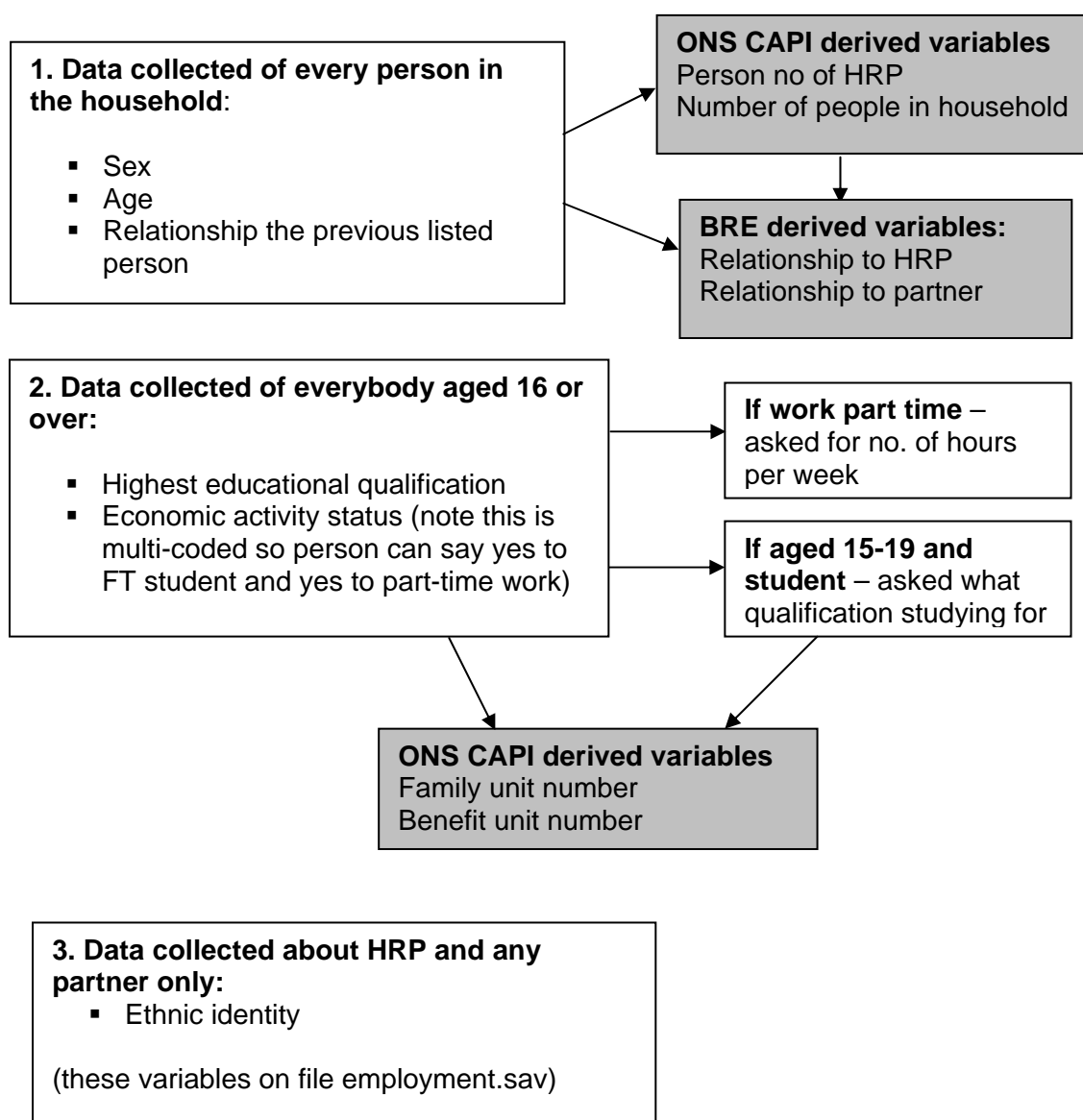
## Disability and adaptations - overview



## Household composition and characteristics - overview

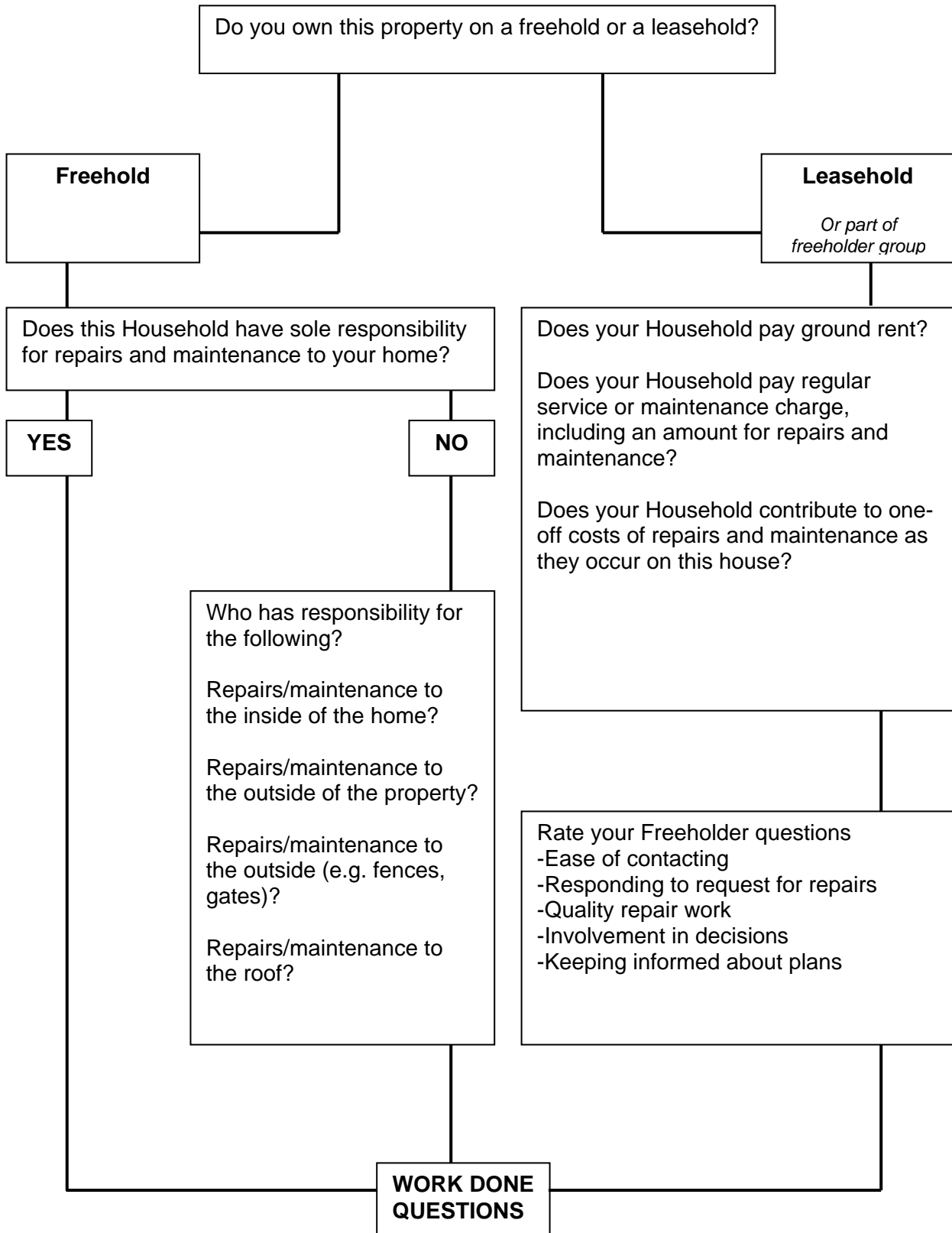
### Important information

Most of the data is on *people.sav* and there is one case per person. Each person has a person number (*persno*) assigned during the interview – note that person 1 is not necessarily the HRP. The variables covering each person's relationship to others are only coded in relation to the previous person. In a 3 person household they will ask for person 2, what is their relation to person 1; for person 3 they will code their relationship to persons 1 and 2. Who is the HRP in couples is determined by a series of questions.

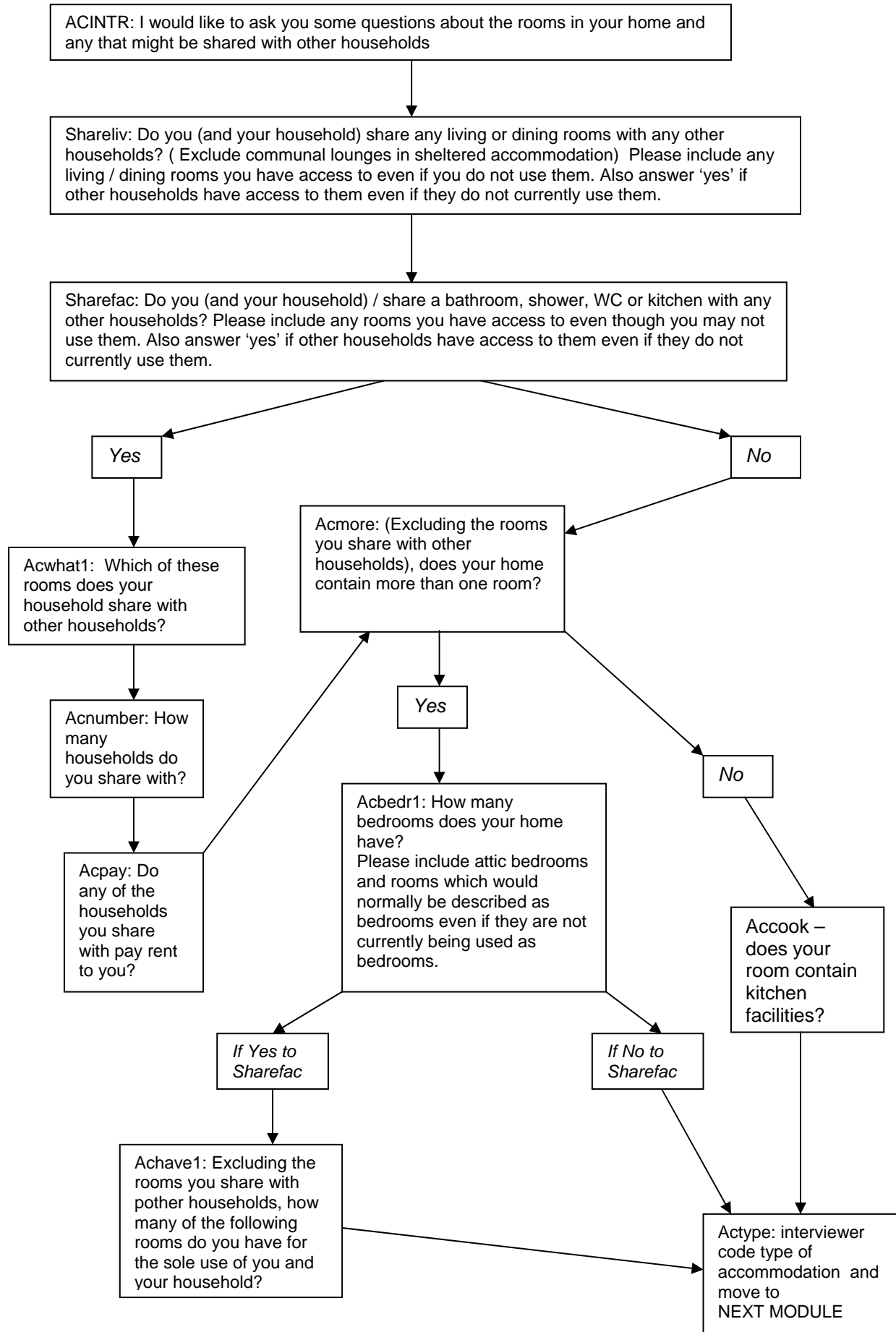


## Property responsibility - overview

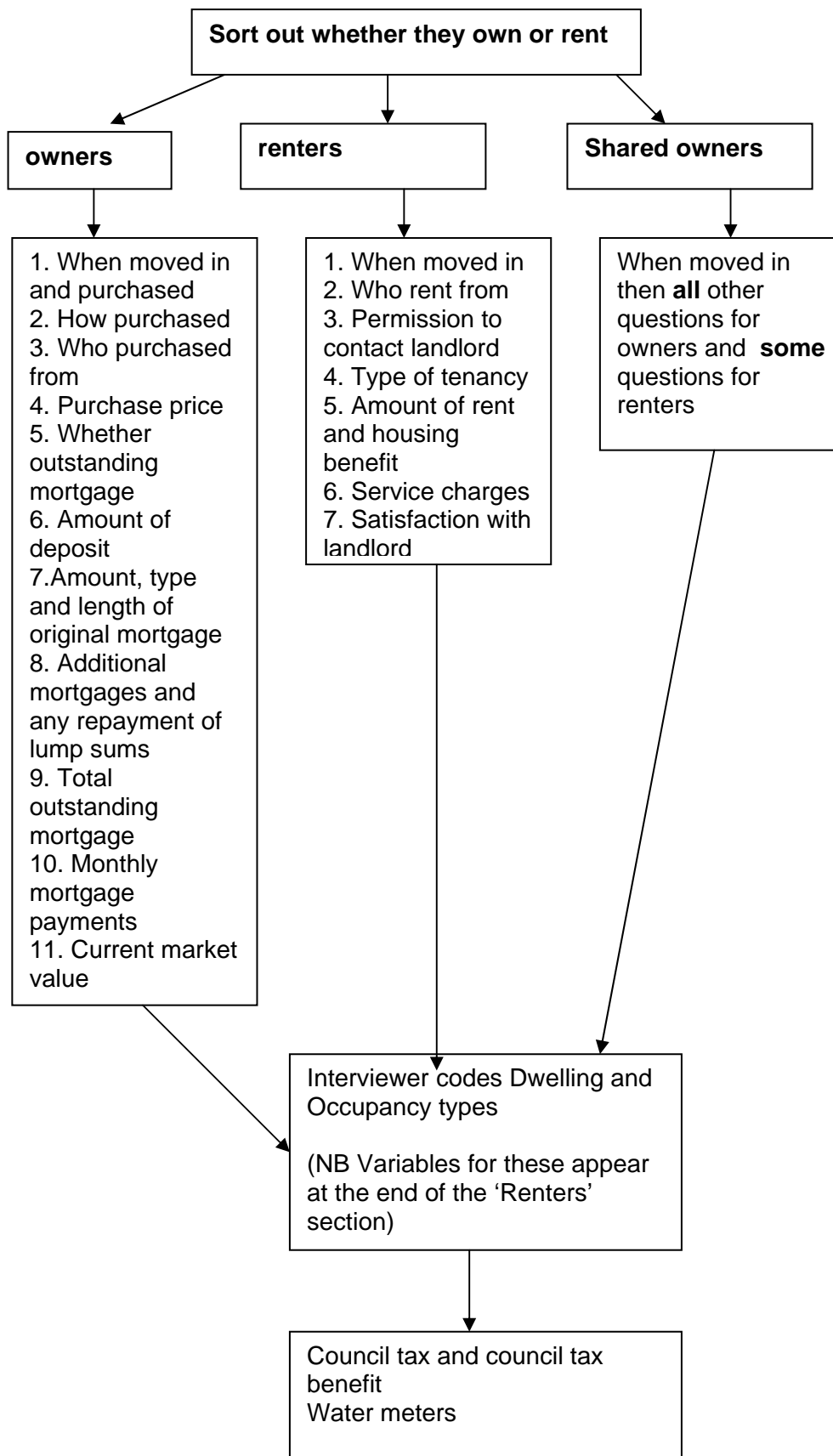
### Owner occupiers



## Rooms the Household has and sharing - overview



## Tenure and housing costs - overview



*Details of any complex situations are in the file 'complex.sav'*

## Work Done overview

