

# MODULE 5

## Searching For Evidence: Sources of Crime Data

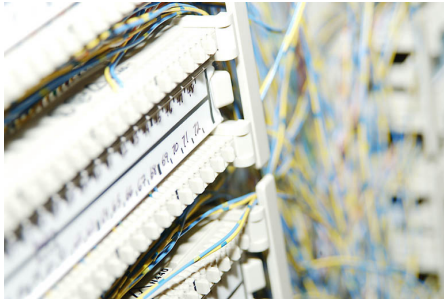
### Survey Data in Teaching

enhancing critical thinking and  
data numeracy

July 2004  
UK Data Archive, University of Essex

x4l@essex.ac.uk  
x4l.data-archive.ac.uk

Version 1.0



## Module 5: Searching For Evidence: Sources of Crime Data

### In this module:

- You get a tour of some of the resources available on the web, including
  - UK Data Archive
  - Social Science Information Gateway (SOSIG)
- You learn how to search for other data
- You get a long list of links to other useful sites

The Police Recorded Crime Figures and the British Crime Survey are just two useful sources of data for crime-related statistics. However they are not the only sources. Access to a computer and a web browser such as Internet Explorer allows the informed individual to harvest information from a number of other likely data sources that can be found on the internet.

### UK Data Archive

Perhaps chief among the sources of British economic and social data on the internet is the [UK Data Archive](#) (UKDA).

The UKDA is an internationally-renowned centre of expertise in data acquisition, and is curator of the largest collection of digital data in the social sciences and humanities in the UK. Most of the data that the UKDA holds are in the form of numerically-coded datasets (see image) and are derived from social surveys. Datasets in this form are known as raw data, because they have not yet been analysed.

	incity	sex	yrsarea	wburgl	wmugged	wcarstol	wfromcar	wra
1	0	1	1	3	3	2	2	
2	0	1	1	2	3	2	2	
3	0	1	4	1	1	1	1	
4	0	0	2	3	3	4	4	
5	0	0	4	3	3	.	.	
6	0	0	3	2	3	3	2	
7	0	0	4	2	1	1	2	
8	0	0	3	1	1	1	2	
9	0	0	3	2	2	.	.	
10	0	1	3	3	2	.	.	
11	0	0	4	2	1	.	.	
12	0	0	2	2	3	3	2	
13	0	1	3	3	4	.	.	
14	0	0	3	3	3	3	3	
15	0	1	4	3	4	3	3	
16	0	0	3	2	3	4	3	

Experienced consumers of data will look for raw data sources on which they can conduct secondary analysis. The term refers to the fact that the analyst has not designed and collected the data themselves but will use the data for their own 'secondary' purposes (in the

case of large-scale official surveys such as the British Crime Survey, 'primary analysis' is usually conducted by a government department).

In the other modules you conduct some secondary analysis yourself. This module, however, is focused on finding potentially useful data.

## Searching for crime-related data at the UKDA

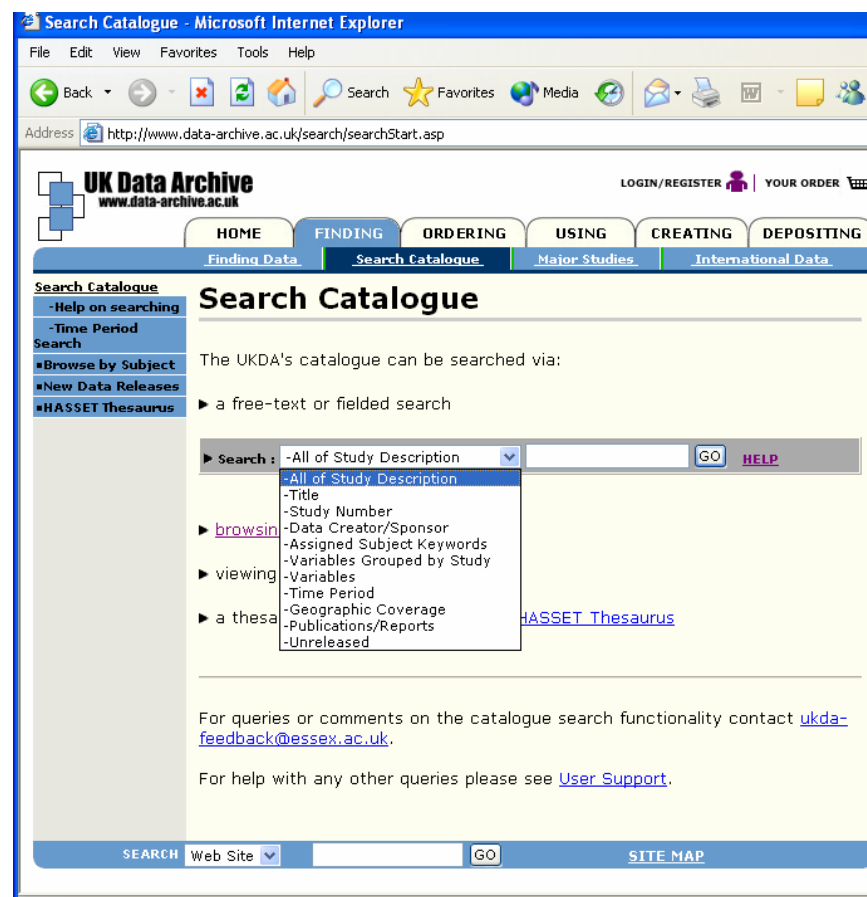
The UKDA's [online catalogue](#) contains a record for each of the several thousand studies held by the UKDA. Each of these records provides information about the study, including an abstract, a list of the main topics covered, information on who deposited the data, when the data were collected and how they can be accessed. A catalogue record will also usually include associated documentation (such as the survey questionnaire) and a list of variables.

The online catalogue is easy to search, and access to the catalogue does not require registration. If you can't immediately find what you are looking for in the catalogue, the UKDA web pages offer alternative means of searching the archive's holdings that you might find more useful.

[For an example of a catalogue record, click here.](#)

### Search facilities at the UKDA

When searching for data at the UKDA, most users will begin by searching the online catalogue.



The catalogue can be searched in a number of ways. As the image indicates, users can choose a field to search from a drop-down list.

In addition, users can:

- search for terms with the same prefix. For example, to find Scotland, Scottish, Scotsman and so on, users can enter the search term **scot\***
- search for an exact phrase by putting quotation marks around the search term, for example "**Scottish crime**"
- combine search terms using AND, OR and AND NOT. For example, typing in

### Scottish AND crime

would find all studies with both the word Scottish and the word crime.  
Note that searches are case independent, it doesn't matter whether or not you use capitals.

'All of Study Description' is the first and default search. This will produce a free-text search on all fields in the list, as well as the abstract and methodology e.g. sampling methods, method of data collection etc. Selecting one of the other fields will provide a more focused search.

[Further help and advice on searching can be found here](#)

### Example: Using the catalogue to search

Access the UKDA's [online catalogue](#).

(i) Suppose you are interested very generally in crime. Type **crime** into the search box on the default search of **All of Study Description** and click 'GO'.

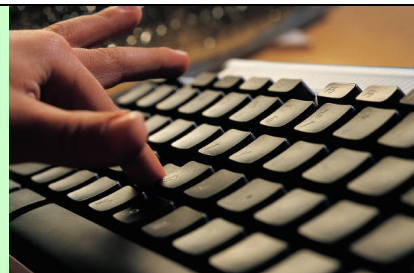
Search :

(ii) You now want to focus your search more clearly. What you are really interested in is fear of crime. Using the drop-down menu, change the search to **Assigned Subject Keywords** and enter **fear of crime** in the search box.

Search :

(c) You realise that what in fact you want to access is the British Crime Survey. Select **Title** from the drop-down menu and enter **british crime** in the search box.

Search :



### investigating...

Try searching the catalogue using other words/phrases and search categories. Are there any studies in the UKDA collection where the data creator/sponsor shares your surname?

## Alternatives to the catalogue

The online catalogue is just one means of searching for data in the UKDA collection. There are several other ways. A very general search for data can be undertaken using the [Browse by Subject' facility](#).

Address: <http://www.data-archive.ac.uk/findingData/browsebySubject.asp>

UK Data Archive  
www.data-archive.ac.uk

LOGIN/REGISTER | YOUR ORDER

HOME FINDING ORDERING USING CREATING DEPOSITING

Finding Data Search Catalogue Major Studies International Data

Search Catalogue

Help on searching

Time Period Search

Browse by Subject

New Data Releases

HASSET Thesaurus

**Browse by Subject**

Each dataset is assigned one or more categories to reflect the overall subject of the data at study level. Select the subject categories that you are interested in and browse the Archive's catalogue for studies with your chosen subject coverage.

<input type="checkbox"/> Economics +	<input type="checkbox"/> Media, communication and language +
<input type="checkbox"/> Education +	<input type="checkbox"/> Political behaviour and attitudes +
<input type="checkbox"/> Employment and labour +	<input type="checkbox"/> Population, vital statistics and censuses
<input type="checkbox"/> Environment, conservation and land use	<input type="checkbox"/> Psychology
+ <input type="checkbox"/> Government, leadership and elites +	<input type="checkbox"/> Reference and instructional +
+ <input type="checkbox"/> Health, health services and medical care	<input type="checkbox"/> Science and technology
<input type="checkbox"/> History +	<input type="checkbox"/> Social issues, attitudes and behaviour +
<input type="checkbox"/> Housing	<input type="checkbox"/> Social structure and stratification +
<input type="checkbox"/> Industry and management +	<input type="checkbox"/> Social welfare: the use and provision of social services
<input type="checkbox"/> International systems, relationships and events	<input checked="" type="checkbox"/> Time use
	<input type="checkbox"/> Travel and transport

BROWSE BY SUBJECT GO RESET

This facility allows the researcher to track down all those datasets that have been assigned to one (or more) subject area(s) – for example, **Travel and transport** or **Psychology**. So, if you are interested in **Time use** studies – that is, studies that typically record how people spend their day or week – you can check the box next to 'Time use' (see image) and click on the **GO** button. The page that is produced will list all the UKDA studies that have been assigned to that particular subject category.

If you want to be a little more precise in your searching, **Browse by Subject** allows this too. For those subject categories with a hyperlink (i.e. those with a '+' at the end), clicking on the link will bring up a list of sub-categories that you can search on.

A further search strategy might be to conduct a thesaurus-aided search using the [Humanities and Social Science Electronic Thesaurus](#) (HASSET). A HASSET search is based on the same technology as the 'Assigned Subject Keywords' search in the online catalogue.

Go to **HASSET** and enter crime in the keyword box. The results page should be similar to this screen

Address: <http://www.data-archive.ac.uk/findingData/thesaurusInfo.asp?keyword=CRIME>

UK Data Archive  
www.data-archive.ac.uk

LOGIN/REGISTER | YOUR ORDER

HOME FINDING ORDERING USING CREATING DEPOSITING

Finding Data Search Catalogue Major Studies International Data

Search Catalogue

Help on searching

Time Period Search

Browse by Subject

New Data Releases

HASSET Thesaurus

**Thesaurus**

Current term  
CRIME

Broader terms	<input type="checkbox"/> Narrower terms	<input type="checkbox"/> Related terms
<a href="#">SOCIAL PROBLEMS</a>		<a href="#">ADMINISTRATION OF JUSTICE</a> <a href="#">CRIME PREVENTION</a> <a href="#">CRIME VICTIMS</a> <a href="#">CRIMINAL LAW</a> <a href="#">CRIMINAL RECORD</a> <a href="#">CRIMINALS</a> <a href="#">CUSTODY (CONFINEMENT)</a> <a href="#">DELINQUENCY</a> <a href="#">FEAR OF CRIME</a> <a href="#">IMPRISONMENT</a> <a href="#">LAW ENFORCEMENT</a> <a href="#">LONG TERM IMPRISONMENT</a> <a href="#">OFFENCES</a> <a href="#">POLICE SERVICES</a> <a href="#">PUNISHMENT</a>

To search the catalogue for one or more terms, check boxes to include Narrower terms and/or Related terms in your search then click on the "Search on Keyword" button below.  
To explore the thesaurus further, select a hyperlinked term.

Search on Keyword

From here, the researcher has two options:

- first, they could simply click on the [Search on Keyword](#) button. Clicking on the button will bring up the list of studies that have the keyword 'crime' assigned to them (this is precisely the same result you would get if you had entered crime as an Assigned Subject Keywords search using the online catalogue);
- the second option available is to broaden, narrow or slightly change the focus of your keyword search.

You will see from the screen that underneath the **Current term** there are three columns – **Broader terms**, **Narrower terms** and **Related terms**. In the example provided, there are no hyperlinks in the Narrower terms column – but, as we will see, this is not always the case. There is just a single alternative in the Broader terms column – social problems. Click on the [SOCIAL PROBLEMS](#) hyperlink; on the page that loads, how many narrower terms are listed?

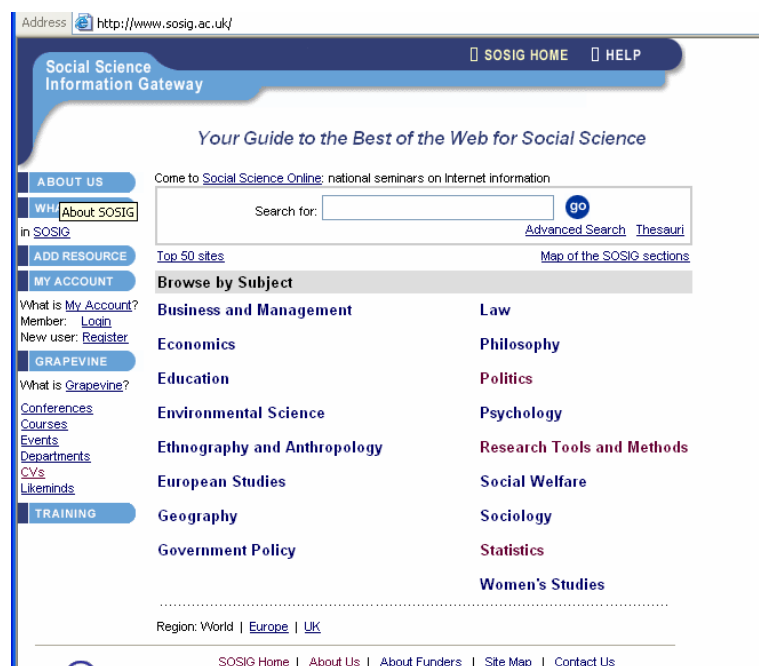
The third column – Related terms – helps the researcher to change the focus of their search by selecting a keyword that is related to the original search term. So, for example, if 'social problems' is our current term, it may be that we are actually interested in beggars. We can then click on the [beggars](#) hyperlink and, on the page that loads, click on the **Search on Keyword** button to retrieve a list of catalogue records that have been tagged as containing data on beggars.

## Other sources of data on the WWW

Up to this point, this module has focused on sourcing raw data. Of course, we are not always interested in accessing raw data. Very often what we need are statistics, figures or tables that have already been produced. The UKDA web site is not so good for this, but there are other sites that cater for this need.

## SOSIG

A good place to start is the Social Science Information Gateway (or SOSIG): [www.sosig.ac.uk](http://www.sosig.ac.uk). SOSIG is a free-to-access internet resource aimed at students, academics and researchers in the fields of social science, business and law. The SOSIG web site has two resources that are likely to be particularly useful in terms of finding data: the [SOSIG Internet Catalogue](#) and the [Social Science Search Engine](#).



The Internet Catalogue allows users to search a database of internet resources related to their subject of enquiry. The database has been put together by qualified social scientists and information specialists so you can be sure that the resources are of good quality.

The Social Science Search Engine is a separate online database from the main SOSIG Internet Catalogue. This database is much larger as the resources have been automatically collected by a search site<sup>1</sup>. However, because the resources have been obtained automatically, they have not been checked for their quality.

## National Statistics Online

The National Statistics Online site [www.statistics.gov.uk](http://www.statistics.gov.uk) is another valuable resource for those interested in accessing published statistics. The National Statistics home page contains a range of links to official data sources and has an especially useful search facility.

The screenshot shows the National Statistics Online homepage. At the top, there is a search bar with the text "SEARCH" and a "GO" button. Below the search bar, there are navigation links: "home", "UK at a Glance", "neighbourhood", "economic", and "census 2001". The main content area is titled "Welcome to National Statistics Online" and includes a brief description of the site's purpose. Below this, there are several news items, each with a small image and a title, followed by a "more" link. On the left side, there is a "Browse by theme" section with a list of categories. On the right side, there are sections for "Statbox", "Latest releases", and "Other ONS sites".

**Search:**  **GO**

**ADVANCED >**

**national STATISTICS**

17 December 2003

**uk at a glance** **neighbourhood** **economic** **census 2001**

**home | UK at a Glance**

**Browse by theme**

- Agriculture, Fishing and Forestry
- Commerce, Energy and Industry
- Crime and Justice
- Economy
- Education and Training
- Health and Care
- Labour Market
- Natural and Built Environment
- Population and Migration
- Public Sector and Other
- Social and Welfare
- Transport, Travel and Tourism

**Quick links**

- Virtual Bookshelf
- Time Series Data
- Journal articles

**Welcome to National Statistics Online**

This is the UK's home of official statistics, reflecting Britain's economy, population and society at national and local level. Summary stories and detailed data releases are published here free of charge.

**News**

**LABOUR MARKET Unemployment Lower**  
Fall of 33,000 with rate at 5.0% **more**

**LABOUR MARKET Average Earnings**  
Public sector growth slows **more**

**ECONOMY Inflation Falls**  
November: CPI down to 1.3%, RPI to 2.5% **more**

**SOCIETY Internet Access**  
11.9 million households online **more**

**GDP Up by 0.7% in Q3** **Cinema** Most visits for 30 years

**Breast Cancer** Death rate falls **Population** Revised Estimates

**UK trade** Deficit narrows **CPI** The New Inflation Target

**Retail Sales** Sustained growth **Asylum** Applications rise

**HIV and AIDS** 20% increase **Regional GVA** Higher in London

**Statbox**

Marriages in England and Wales fell in 2001 to their lowest level since 1897

**Latest releases**

17 DECEMBER 2003  
► **Labour Market Statistics December 2003: South East**

17 DECEMBER 2003  
► **Labour Market Statistics December 2003: Scotland**

17 DECEMBER 2003  
► **Internet connectivity October 2003**

**more releases**

**About National Statistics**

► Code of Practice, Geography, Recruitment, Methodology, and more

**Other ONS sites**

► Information about

Enter **fear of crime** in the search box. Your search will bring up several sources of official data with links to published tables and figures.

Try entering other search terms that you are interested in.



## **Appendix: Other WWW resources**

[SOSIG](#) and [National Statistics Online](#) are just two of a great many online resources. There are hundreds more. Among them<sup>2</sup>:

### **UNITED KINGDOM STATISTICS:**

#### **National Statistics –**

Bookshelf	<a href="http://www.statistics.gov.uk/OnlineProducts/">www.statistics.gov.uk/OnlineProducts/</a>
Department for Education and Skills (DfES) statistics	<a href="http://www.dfes.gov.uk/statistics/">www.dfes.gov.uk/statistics/</a>
Department for Environment, Food and Rural Affairs (DEFRA) statistics	<a href="http://statistics.defra.gov.uk/esg/">statistics.defra.gov.uk/esg/</a>
Department of Health (DOH) statistics	<a href="http://www.doh.gov.uk/public/stats3.htm">www.doh.gov.uk/public/stats3.htm</a>
Department of Transport, Local Government and the Regions (DTLR) statistics	<a href="http://www.dtlr.gov.uk/statistics/">www.dtlr.gov.uk/statistics/</a>
Education	<a href="http://www.statistics.gov.uk/themes/education/">www.statistics.gov.uk/themes/education/</a>
Government Actuary's Department	<a href="http://www.gad.gov.uk">www.gad.gov.uk</a>
Health and care	<a href="http://www.statistics.gov.uk/themes/health_care/">www.statistics.gov.uk/themes/health_care/</a>
Labour market	<a href="http://www.statistics.gov.uk/themes/labour_market/">www.statistics.gov.uk/themes/labour_market/</a>
Neighbourhood statistics	<a href="http://www.statistics.gov.uk/neighbourhood/">www.statistics.gov.uk/neighbourhood/</a>
Population and migration	<a href="http://www.statistics.gov.uk/themes/population/">www.statistics.gov.uk/themes/population/</a>
Statbase®	<a href="http://www.statistics.gov.uk/statbase/">www.statistics.gov.uk/statbase/</a>
The Economy	<a href="http://www.statistics.gov.uk/themes/economy/">www.statistics.gov.uk/themes/economy/</a>
UK 2004: Official Yearbook of the UK	<a href="http://www.statistics.gov.uk/statbase/Product.asp?vlnk=5703">www.statistics.gov.uk/statbase/Product.asp?vlnk=5703</a>

### **SCOTTISH STATISTICS:**

Carstairs Scores for Scottish Postcode Sectors from the 1991 Census	<a href="http://www.msoc-mrc.gla.ac.uk/Reports/Pages/PHRU_MAIN.html">www.msoc-mrc.gla.ac.uk/Reports/Pages/PHRU_MAIN.html</a>
EDINA – Edinburgh Data and Information Access	<a href="http://edina.ed.ac.uk">edina.ed.ac.uk</a>
Edinburgh Facts and Figures	<a href="http://www.edinburgh.gov.uk/CEC/City_Development/Economic_Development_and_Estates/Edinburgh_Facts_and_Figures/content.html">www.edinburgh.gov.uk/CEC/City_Development/Economic_Development_and_Estates/Edinburgh_Facts_and_Figures/content.html</a>
Edinburgh University Data Library	<a href="http://datalib.ed.ac.uk">datalib.ed.ac.uk</a>
Gateway to Scotland, provided by Geography Department, Edinburgh University	<a href="http://www.geo.ed.ac.uk/home/scotland/scotland.html">www.geo.ed.ac.uk/home/scotland/scotland.html</a>
Gazetteer for Scotland	<a href="http://www.geo.ed.ac.uk/scotgaz/">www.geo.ed.ac.uk/scotgaz/</a>
Health Education Board for Scotland, statistics database	<a href="http://www.hebs.scot.nhs.uk/services/data/searchstats.htm">www.hebs.scot.nhs.uk/services/data/searchstats.htm</a>
ISD, Scottish health statistics	<a href="http://www.show.scot.nhs.uk/isd/Scottish_Health_Statistics/SHS2000/home.htm">www.show.scot.nhs.uk/isd/Scottish_Health_Statistics/SHS2000/home.htm</a>
Mid-year population estimates	<a href="http://wood.ccta.gov.uk/grosweb/grosweb.nsf/pages/popest">wood.ccta.gov.uk/grosweb/grosweb.nsf/pages/popest</a>
National Library of Scotland	<a href="http://www.nls.uk">www.nls.uk</a>
National Statistics – Scotland neighbourhood statistics	<a href="http://www.statistics.gov.uk/neighbourhood/scotland.asp">www.statistics.gov.uk/neighbourhood/scotland.asp</a>
Population statistics, provided by Geography Department, Edinburgh University	<a href="http://www.geo.ed.ac.uk/home/scotland/pop.html">www.geo.ed.ac.uk/home/scotland/pop.html</a>
Scottish Abstract of Statistics	<a href="http://www.scotland.gov.uk/library/sas/sa00-00.htm">www.scotland.gov.uk/library/sas/sa00-00.htm</a>
Scottish Confederation of University and Research Libraries	<a href="http://scurl.ac.uk">scurl.ac.uk</a>
Scottish Council for Research in Education	<a href="http://www.scre.ac.uk">www.scre.ac.uk</a>
Scottish Economic History Database, 1550 – 1780	<a href="http://www.ex.ac.uk/~ajigibson/scotdata/scot_database_home.html">www.ex.ac.uk/~ajigibson/scotdata/scot_database_home.html</a>
Scottish Executive – Scottish Social Statistics	<a href="http://www.scotland.gov.uk/stats/sss/sss-00.asp">www.scotland.gov.uk/stats/sss/sss-00.asp</a>
Scottish Executive statistics	<a href="http://www.scotland.gov.uk/stats/">www.scotland.gov.uk/stats/</a>
Scottish Executive, Central Research Unit	<a href="http://www.scotland.gov.uk/cru/whatisclu.asp">www.scotland.gov.uk/cru/whatisclu.asp</a>
Scottish Further Education Funding Council	<a href="http://www.sfefc.ac.uk">www.sfefc.ac.uk</a>
Scottish Higher Education Funding Council	<a href="http://www.shefc.ac.uk">www.shefc.ac.uk</a>
Scottish Local Government Information Unit	<a href="http://www.slgui.gov.uk/about/">www.slgui.gov.uk/about/</a>
Scottish Parliament	<a href="http://www.scottish.parliament.uk">www.scottish.parliament.uk</a>
Scottish Statistics, 2000	<a href="http://www.scotland.gov.uk/library2/doc16/ss2-00.asp">www.scotland.gov.uk/library2/doc16/ss2-00.asp</a>
Scottish Statistics, 2001	<a href="http://www.scotland.gov.uk/library3/misc/ssfc-00.asp">www.scotland.gov.uk/library3/misc/ssfc-00.asp</a>
Scottish Statistics, provided by Glasgow University Library	<a href="http://www.lib.gla.ac.uk/Depts/MOPS/Offpub/scotstat.html">www.lib.gla.ac.uk/Depts/MOPS/Offpub/scotstat.html</a>



## **WELSH STATISTICS:**

Data Wales	<a href="http://www.data-wales.co.uk">www.data-wales.co.uk</a>
National Assembly for Wales – Statistics for Wales	<a href="http://www.wales.gov.uk/keypubstatisticsforwales/">www.wales.gov.uk/keypubstatisticsforwales/</a>
National Assembly for Wales	<a href="http://www.wales.gov.uk">www.wales.gov.uk</a>
National Statistics – Wales neighbourhood statistics	<a href="http://www.statistics.gov.uk/neighbourhood/wales.asp">www.statistics.gov.uk/neighbourhood/wales.asp</a>
Network Wales	<a href="http://www.network.wales.org.uk">www.network.wales.org.uk</a>
V Wales	<a href="http://www.red4.co.uk/About_Wales/about_wales.htm">www.red4.co.uk/About_Wales/about_wales.htm</a>
Wales GenWeb	<a href="http://www.walesgenweb.com">www.walesgenweb.com</a>
Welsh Library at University of Wales, Bangor	<a href="http://www.bangor.ac.uk/is/llyfrcym/welshlib.htm">www.bangor.ac.uk/is/llyfrcym/welshlib.htm</a>

## **NORTHERN IRISH STATISTICS:**

Agricultural Research Institute of Northern Ireland	<a href="http://www.arini.ac.uk">www.arini.ac.uk</a>
Conflict Archive on the Internet (CAIN) - Ulster University	<a href="http://cain.ulst.ac.uk">cain.ulst.ac.uk</a>
Department for Employment and Learning Northern Ireland	<a href="http://www.delni.gov.uk">www.delni.gov.uk</a>
Department for Regional Development Northern Ireland	<a href="http://www.drdni.gov.uk">www.drdni.gov.uk</a>
Department for Social Development Northern Ireland	<a href="http://www.dsdni.gov.uk">www.dsdni.gov.uk</a>
Department of Culture, Arts and Leisure Northern Ireland	<a href="http://www.dcalni.gov.uk">www.dcalni.gov.uk</a>
Department of Education in Northern Ireland	<a href="http://www.deni.gov.uk">www.deni.gov.uk</a>
Department of Enterprise Trade and Investment for NI	<a href="http://www.detini.gov.uk">www.detini.gov.uk</a>
Department of Health, Social Services & Public Safety	<a href="http://www.dhsspsni.gov.uk">www.dhsspsni.gov.uk</a>
Dept of Education in Northern Ireland - Key Information and Statistics	<a href="http://www.deni.gov.uk/statistics/">www.deni.gov.uk/statistics/</a>
General Register Office Northern Ireland	<a href="http://www.groni.gov.uk">www.groni.gov.uk</a>
Geological Survey of Northern Ireland - British Geological Survey	<a href="http://www.bgs.ac.uk/gsni/">www.bgs.ac.uk/gsni/</a>
Health Promotion Agency for Northern Ireland	<a href="http://www.healthpromotionagency.org.uk">www.healthpromotionagency.org.uk</a>
N. Ireland Health and Personal Social Services Web Pages	<a href="http://www.n-i.nhs.uk">www.n-i.nhs.uk</a>
National Statistics – Northern Ireland neighbourhood statistics	<a href="http://www.statistics.gov.uk/neighbourhood/n_ireland.asp">www.statistics.gov.uk/neighbourhood/n_ireland.asp</a>
NISRA - Census	<a href="http://www.nisra.gov.uk/census/start.html">www.nisra.gov.uk/census/start.html</a>
North of Ireland Family History Society	<a href="http://www.nifhs.org">www.nifhs.org</a>
Northern Ireland Assembly	<a href="http://www.ni-assembly.gov.uk">www.ni-assembly.gov.uk</a>
Northern Ireland Cancer Registry	<a href="http://www.qub.ac.uk/nicr/intro.htm">www.qub.ac.uk/nicr/intro.htm</a>
Northern Ireland Economic Council	<a href="http://niec.org.uk">niec.org.uk</a>
Northern Ireland Economic Research Centre	<a href="http://www.qub.ac.uk/nierc">www.qub.ac.uk/nierc</a>
Northern Ireland Elections Site	<a href="http://explorers.whyte.com">explorers.whyte.com</a>
Northern Ireland Executive	<a href="http://www.nics.gov.uk">www.nics.gov.uk</a>
Northern Ireland GenWeb	<a href="http://www.rootsweb.com/~nirwgw/">www.rootsweb.com/~nirwgw/</a>
Northern Ireland Life and Times Survey	<a href="http://www.qub.ac.uk/ss/csr/nilt/">www.qub.ac.uk/ss/csr/nilt/</a>
Northern Ireland Office Online	<a href="http://www.nio.gov.uk/links.htm">www.nio.gov.uk/links.htm</a>
Northern Ireland Statistics and Research Agency	<a href="http://www.nisra.gov.uk">www.nisra.gov.uk</a>
Northern Ireland Statistics	<a href="http://capacitybuilder.co.uk/stats.htm">capacitybuilder.co.uk/stats.htm</a>
Northern Ireland Tourist Board Research Department	<a href="http://www.nitb.com/tourismfacts/">www.nitb.com/tourismfacts/</a>
Northern Ireland Transport Statistics	<a href="http://www.doeni.gov.uk/statistics/TRANSPORT_ANNUAL/PDF/9899/sec29899.pdf">www.doeni.gov.uk/statistics/TRANSPORT_ANNUAL/PDF/9899/sec29899.pdf</a>
Ordnance Survey of Northern Ireland	<a href="http://www.osni.gov.uk">www.osni.gov.uk</a>
Public Record Office Northern Ireland	<a href="http://proni.nics.gov.uk">proni.nics.gov.uk</a>
Youth Council for Northern Ireland – Research	<a href="http://www.youthcouncil-ni.org.uk/Research/right-research.htm">www.youthcouncil-ni.org.uk/Research/right-research.htm</a>

## **LONDON STATISTICS:**

Focus on London 2000	<a href="http://www.statistics.gov.uk/statbase/Product.asp?vlnk=1229">www.statistics.gov.uk/statbase/Product.asp?vlnk=1229</a>
----------------------	--

## **EUROPEAN STATISTICS:**

Eurostat	<a href="http://europa.eu.int/comm/eurostat/Public/datashop/print-catalogue/EN?catalogue=Eurostat">europa.eu.int/comm/eurostat/Public/datashop/print-catalogue/EN?catalogue=Eurostat</a>
----------	--

## **INTERNATIONAL STATISTICS:**

OECD statistics	<a href="http://www.oecd.org/statistics/">www.oecd.org/statistics/</a>
United Nations Industrial Development Organization – Geographical reference guide	<a href="http://www.unido.org/regions.cfm?TY=R&amp;RID=04">www.unido.org/regions.cfm?TY=R&amp;RID=04</a>
United Nations Statistics Division	<a href="http://www.un.org/Depts/unsd/">www.un.org/Depts/unsd/</a>

## **AGRICULTURE:**

National Statistics – Bookshelf: Agriculture (UK)

[www.statistics.gov.uk/OnlineProducts/default.asp#agriculture](http://www.statistics.gov.uk/OnlineProducts/default.asp#agriculture)

## **CRIME/JUSTICE:**

National Statistics – Bookshelf: Crime/Justice

[www.statistics.gov.uk/OnlineProducts/default.asp#crime](http://www.statistics.gov.uk/OnlineProducts/default.asp#crime)

## **ECONOMY:**

Bureau of Economic Analysis (US)

[www.bea.doc.gov](http://www.bea.doc.gov)

Economic Statistics (UN)

[www.un.org/Depts/unsd/sd\\_economic.htm](http://www.un.org/Depts/unsd/sd_economic.htm)

European Central Bank - Statistics (EU)

[www.ecb.int/stats/stats.htm](http://www.ecb.int/stats/stats.htm)

FedStats (US)

[www.whitehouse.gov/fsbr/esbr.html](http://www.whitehouse.gov/fsbr/esbr.html)

National Statistics – Bookshelf: Economy (UK)

[www.statistics.gov.uk/OnlineProducts/default.asp#economy](http://www.statistics.gov.uk/OnlineProducts/default.asp#economy)

National Statistics – The Economy (UK)

[www.statistics.gov.uk/themes/economy/](http://www.statistics.gov.uk/themes/economy/)

OECD Statistics (OECD)

[www.oecd.org/oecd/pages/home/displaygeneral/0,3380,EN-home-](http://www.oecd.org/oecd/pages/home/displaygeneral/0,3380,EN-home-20-nodirectorate-no-no-no-20,FF.html)

[20-nodirectorate-no-no-no-20,FF.html](http://20-nodirectorate-no-no-no-20,FF.html)

Stat-USA® (US)

[www.stat-usa.gov](http://www.stat-usa.gov)

World Bank Group Data (global)

[www.worldbank.org/data/](http://www.worldbank.org/data/)

## **EDUCATION:**

DfES Statistics (UK)

[www.dfes.gov.uk/statistics/](http://www.dfes.gov.uk/statistics/)

Higher Education Statistics Agency (UK)

[www.hesa.ac.uk](http://www.hesa.ac.uk)

National Center for Education Statistics (US)

[nces.ed.gov](http://nces.ed.gov)

National Statistics – Bookshelf: Education (UK)

[www.statistics.gov.uk/OnlineProducts/default.asp#education](http://www.statistics.gov.uk/OnlineProducts/default.asp#education)

National Statistics – Education (UK)

[www.statistics.gov.uk/themes/education/](http://www.statistics.gov.uk/themes/education/)

World Education Indicators (UNESCO)

[unescostat.unesco.org/en/stats/stats0.htm](http://unescostat.unesco.org/en/stats/stats0.htm)

## **EMPLOYMENT:**

National Statistics – Bookshelf: Labour Market (UK)

[www.statistics.gov.uk/OnlineProducts/default.asp#labour](http://www.statistics.gov.uk/OnlineProducts/default.asp#labour)

## **ENVIRONMENT:**

Environment Statistics (UN)

[www.un.org/Depts/unsd/enviro/environment.htm](http://www.un.org/Depts/unsd/enviro/environment.htm)

## **HEALTH:**

DOH statistics (UK)

[www.doh.gov.uk/public/stats3.htm](http://www.doh.gov.uk/public/stats3.htm)

National Center for Health Statistics (US)

[www.cdc.gov/nchs/](http://www.cdc.gov/nchs/)

National Statistics – Bookshelf: Health (UK)

[www.statistics.gov.uk/OnlineProducts/default.asp#health](http://www.statistics.gov.uk/OnlineProducts/default.asp#health)

National Statistics – Health and care (UK)

[www.statistics.gov.uk/themes/health\\_care/](http://www.statistics.gov.uk/themes/health_care/)

OECD Health (OECD)

[www1.oecd.org/els/health/software/](http://www1.oecd.org/els/health/software/)

WHOSIS (global)

[www.who.int/whosis/](http://www.who.int/whosis/)

World Health Organisation (global)

[www.who.dk/country/country.htm](http://www.who.dk/country/country.htm)

## **POPULATION/MIGRATION:**

AmeriStat (US)

[www.ameristat.org](http://www.ameristat.org)

Census Bureau (US)

[www.census.gov](http://www.census.gov)

Demographia (UK)

[www.demographia.com/dbx-uk.htm](http://www.demographia.com/dbx-uk.htm)

Demographic and Social Statistics (UN)

[www.un.org/Depts/unsd/sd\\_social.htm](http://www.un.org/Depts/unsd/sd_social.htm)

Government Actuary's Department (UK)

[www.gad.gov.uk/policy\\_and\\_stats/population\\_projections.htm](http://www.gad.gov.uk/policy_and_stats/population_projections.htm)

National Statistics – Bookshelf: Population/Migration (UK)

[www.statistics.gov.uk/OnlineProducts/default.asp#population](http://www.statistics.gov.uk/OnlineProducts/default.asp#population)

National Statistics – Population and Migration (UK)

[www.statistics.gov.uk/themes/population/](http://www.statistics.gov.uk/themes/population/)

Popnet (global)

[www.popnet.org](http://www.popnet.org)

World Populations Trends (UN)

[www.undp.org/popin/wdtrends/wdtrends.htm](http://www.undp.org/popin/wdtrends/wdtrends.htm)

## **TRANSPORT/TRAVEL:**

National Statistics – Bookshelf: Transport (UK)

[www.statistics.gov.uk/OnlineProducts/default.asp#transport](http://www.statistics.gov.uk/OnlineProducts/default.asp#transport)

## SUMMARY

- You toured of some of the resources available on the web, including the UK Data Archive and Social Science Information Gateway (SOSIG).
- You learned how to search for other data
- You explored links to other useful sites to do with statistics, such as the National Statistics Online web site

---

<sup>1</sup> These are web sites such as Google, Altavista, MSN search which are used as online web directories.

<sup>2</sup> Note that these are correct as at May 2004, but are liable to change. These are sites external to the UK Data Archive, and access and content cannot be vouchsafed.